



Elliott Road, W4 1PE

A nicely presented two bedroomed split level maisonette situated within this very popular residential road, just moments from Chiswick's main high street, with its array of boutique shops and restaurants. Accommodation provides, spacious reception room, two bedrooms, bathroom and further en-suite shower room, fitted kitchen with breakfast bar, eaves storage, gas fired central heating. Local transport links include Turnham Green Tube Station, numerous local bus routes with convenient vehicular access via A4/M4 Central London, the west and Heathrow. The property is offered as unfurnished and is Available 31st March

£2,000 Per Month

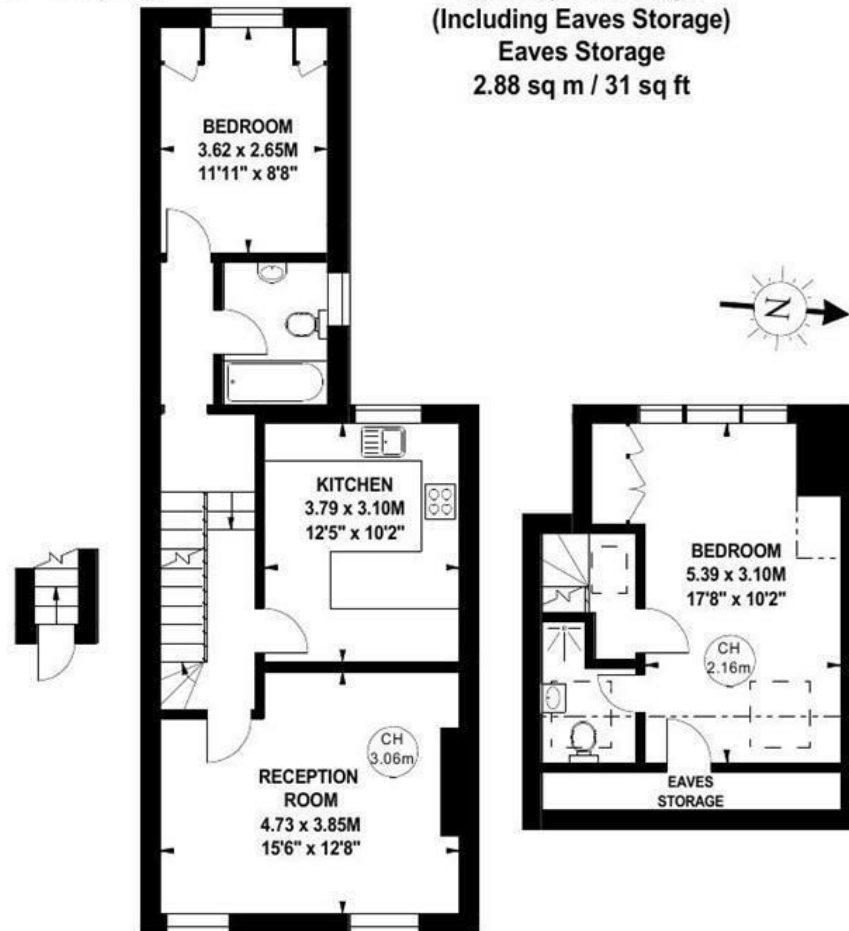
- Spacious reception room
- Bathroom & en-suite shower room
- Two bedrooms
- Split level accommodation
- Fitted kitchen with breakfast bar
- Unfurnished
- Excellent central location
- Hounslow Council Tax Band- D
- Available 31st March

Elliot Road, W4

Approximate gross internal area

81.47 sq m / 877 sq ft
 (Including Eaves Storage)
Eaves Storage
 2.88 sq m / 31 sq ft

Key :
 CH - Ceiling Height

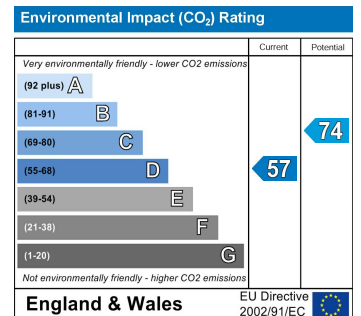
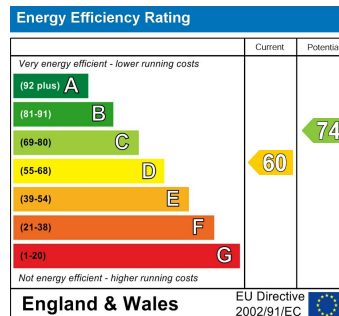


Ground Floor
 Entrance
 8 sq ft

First Floor
 578 sq ft

Second Floor
 291 sq ft

The floor plan is not to scale and measurements and areas shown are approximate and therefore should be used for illustrative purposes only. The plan has been prepared in accordance with the RICS code of Measuring Practice and whilst we have confidence in the information produced, it must not be relied on. If there is any aspect of particular importance, you should carry out or commission your own inspection of the property.
 Copyright of FeaturePRO.



5-7 Turnham Green Terrace, Chiswick, London, W4 1RG
 Tel 020 8747 8800
 E-mail lettings@whitmanandco.com
 Website www.whitmanandco.com