



25 Roston Road, Salford, M7 4FS

Offers Over £625,000





Area Map



Details:

We are pleased to offer to the market this deceptively spacious 6 bedroom detached house which we consider to be in excellent move-in condition.

In brief the house comprises: on the ground floor large open plan living space including integrated Succah, spacious modern Koshier kitchen with dining area, downstairs W.C., on the first floor Master bedroom with en-suite shower room, 2 double bedrooms and family bathroom with utility area, and on the second floor 3 double bedrooms and shower room. Externally there is a paved area to the front with off road parking for one car and a paved garden to the rear.

The house is ready to move in to and boasts the following features: fully tiled floors to the ground floor, recently fitted carpets throughout, double glazing, gas central heating via a Worcester Bosch combi boiler and off road parking for one car.

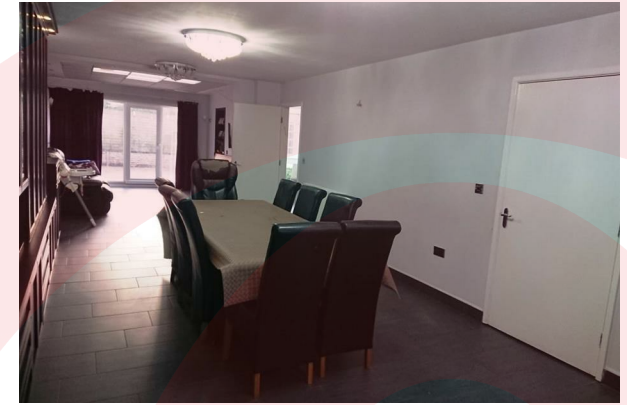
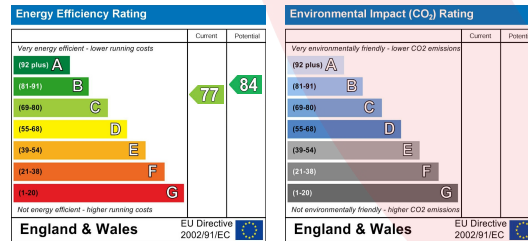
The house is located in the sought after neighborhood of Broughton Park with convenient access to local schools, shops and houses of worship.

The property must be viewed to be fully appreciated.

Viewing

Please contact us on 0161 773 3978 if you wish to arrange a viewing appointment for this property or require further information.

Energy Efficiency Graph



These particulars, whilst believed to be accurate are set out as a general outline only for guidance and do not constitute any part of an offer or contract. Intending purchasers should not rely on them as statements of representation of fact, but must satisfy themselves by inspection or otherwise as to their accuracy. No person in this firm's employment has the authority to make or give any representation or warranty in respect of the property.

3 Middleton Road, Manchester, M8 5DT

T: 0161 773 3978 | F: 0161 211 3573 | enquiries@amcomanagement.com

www.amcomanagement.com

Zoopa



rightmove

