



Broad Street, Bromsgrove, B61 8LS | £249,950
Two Bedroom Mid-Terraced House

Features:

- Two Double Bedrooms
- Well Appointed Shower Room and Downstairs WC
- Modern Kitchen/Diner and Separate Utility Room
- Lounge and Conservatory
- Rear Garden
- Gated Driveway

Description:

A particularly well presented two double bedroom mid-terraced house, offered with a modern kitchen/diner, lounge, conservatory, well appointed shower room, pleasant rear garden and gated off road parking, situated within easy distance of Bromsgrove town centre.

The accommodation, in brief, features:- Gated Driveway, Enclosed Porch, Hallway, Lounge with Wall Mounted Fire and Sliding Patio Door to Conservatory with French Doors to Rear Garden, Modern Kitchen/Diner with Door to Rear Garden and Integrated Dishwasher, Double Oven, Gas Hob and Extractor, Utility Room with Door to Rear Garden, Downstairs WC, Stairs to First Floor Landing, Master Bedroom, Double Bedroom Two with Built In Cupboards/Wardrobes and Well Appointed Shower Room.

Outside, the property enjoys a rear garden with a paved patio with steps up to a lawn with plants and shrubs to fenced boundaries.

Situated within easy distance of Bromsgrove town centre which offers a good range of shops, eateries, bars, leisure centres and local first, middle, and high schools. The area has excellent transport links via the local M5 and M42 motorway network, as well as regular train and bus services to Birmingham, Worcester and surrounding areas.



Room Dimensions:

Hall

Lounge:

10' 7" x 17' 0" (3.25m x 5.19m)

Conservatory:

10' 6" x 9' 6" (3.21m x 2.92m)

Kitchen/Diner:

13' 11" x 18' 0" (4.26m x 5.51m) max

Utility Room:

6' 3" x 9' 5" (1.92m x 2.89m)

WC

6' 4" x 3' 1" (1.95m x 0.94m)

Stairs To First Floor Landing

Master Bedroom:

15' 1" x 10' 7" (4.61m x 3.25m)

Bedroom Two:

10' 10" x 9' 2" (3.32m x 2.81m)

Shower Room:

7' 10" x 5' 5" (2.39m x 1.67m)

EPC: TBC

Council Tax Band: B

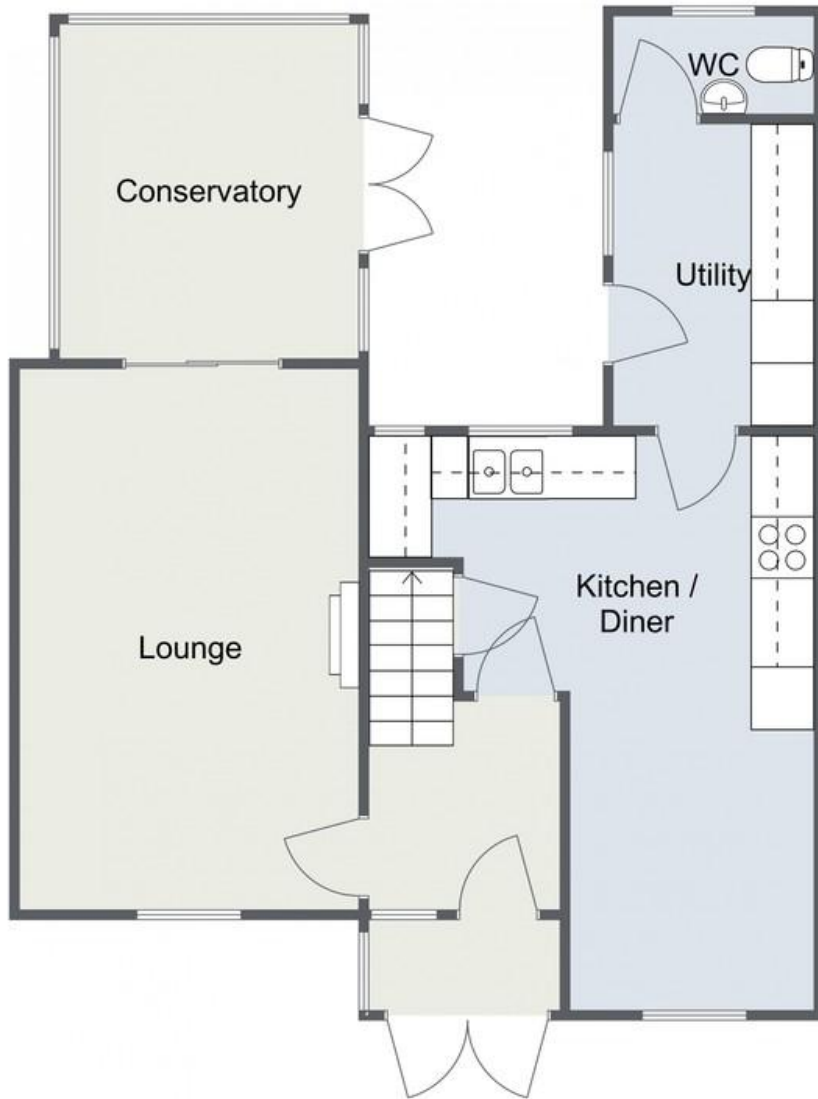
Tenure: Freehold

For more information on Broad Street or to arrange a viewing, please call the Bromsgrove Office on 01527 872 479

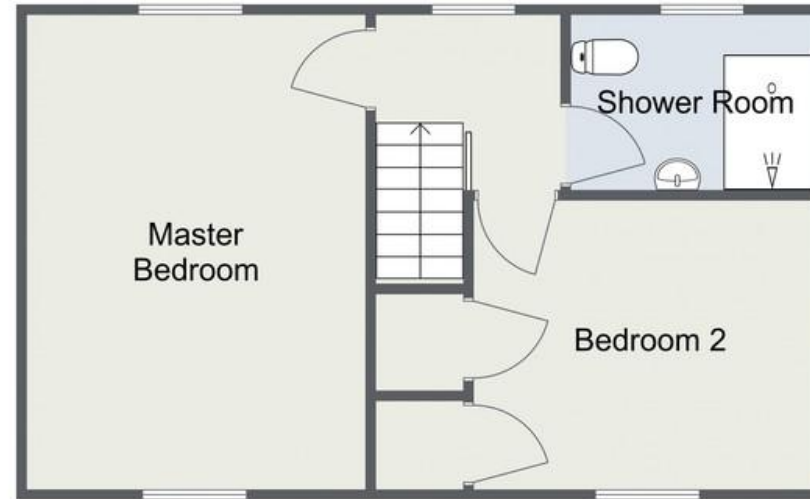


Broad Street, Bromsgrove

Ground Floor



First Floor



Total Area Approx
92.2 sq m
992.4 sq ft

For illustrative purposes only. Decorative finishes, fixtures & fittings do not represent the current state of the property. Measurements are approximate & not to scale. Floor Plans made using RoomSketcher.

Please read the following: These particulars are for general guidance only and are based on information supplied and approved by the seller. Complete accuracy cannot be guaranteed and may be subject to errors and/or omissions. They do not constitute a contract or part of a contract in any way. We are not surveyors or conveyancing experts therefore we cannot and do not comment on the condition, issues relating to title or other legal issues that may affect this property. Interested parties should employ their own professionals to make enquiries before carrying out any transactional decisions. Photographs are provided for illustrative purposes only and the items shown in these are not necessarily included in the sale, unless specifically stated. The mention of any fixtures, fittings and/or appliances does not imply that they are in full efficient working order and they have not been tested. All dimensions are approximate. We are not liable for any loss arising from the use of these details.