



Abbey Road, St Johns Wood NW8

Penthouse apartment

Asking Price Of: £499,950

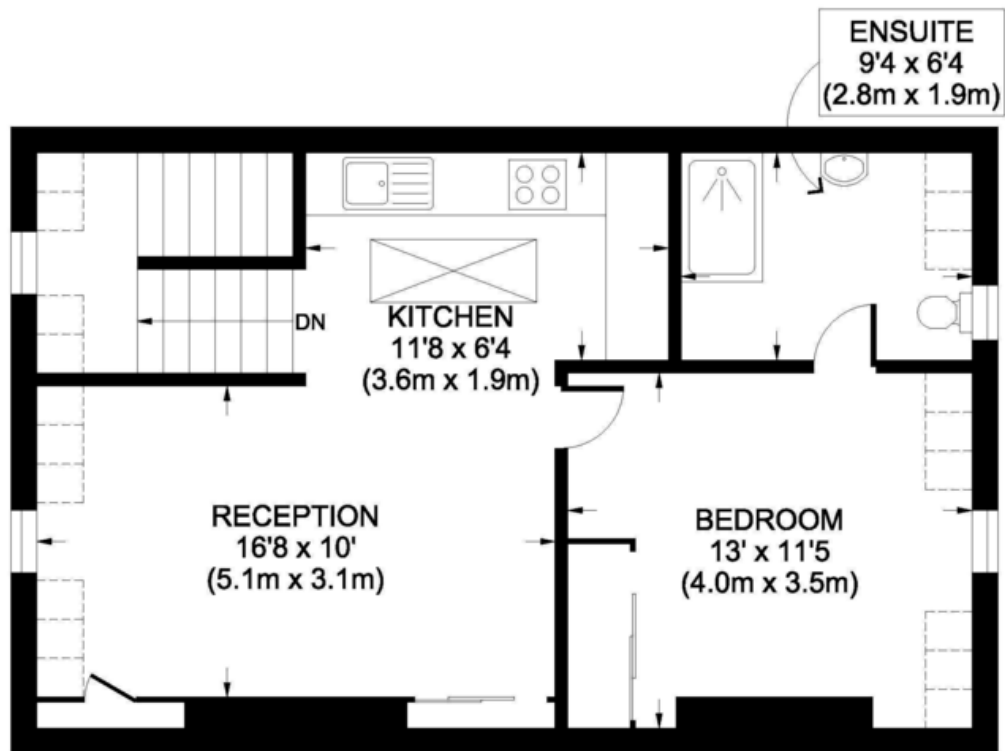
This penthouse period apartment on the famous Abbey Road is being offered to the market chain free. The bright, modern open plan living room leading from the recessed kitchen is in a great condition and makes for a light and spacious feel. The master suite with built in storage, shower room and double-glazed windows over looking the famous street, offers a great amount of privacy and comfort. Being situated in such a popular area in such immaculate condition, early viewings are strongly recommended.



- Penthouse apartment
- Open plan kitchen and living room
- En-suite off master bedroom
- On the famous Abbey Road
- Immaculate condition
- Walking distance to transport links

Located on a quiet terrace off Belgrave Gardens, this apartment is within walking distance of both St. Johns Wood and Maida Vale. With such amazing shopping, restaurants and famous London attractions nearby, the local neighbourhoods offer a wide variety of attractions and amenities as well as easy transport links into central.

Abbey Road, NW8



FOURTH FLOOR
GROSS INTERNAL
FLOOR AREA 534 SQ FT

APPROX. GROSS INTERNAL FLOOR AREA: 534 SQ FT /50 SQM

Ref:

Copyright Lumiere digital

Disclaimer: Floor plan measurements are approximate and are for illustrative purposes only. While we do not doubt the floor plan accuracy and completeness, you or your advisors should conduct a careful, independent investigation of the property in respect of monetary valuation

Contact us

20 Great Western Road

London

W9 3NN

T: 020 7286 5757

E: sales@westways.co.uk



Westways



Tenure: Leasehold
Lease Remaining: 93

Service Charge: £1,300
Ground Rent: £240

Local Authority: Westminster City Council
Council Tax Band: D

EPC Rating: E

In accordance with the 1993 Misdescriptions Act: The agent has not tested any apparatus, equipment, fixtures, fittings or services and se cannot verify they are in working order. Neither has the Agent checked the legal documents to verify the Leasehold/Freehold status of the property. The buyer is advised to obtain verification from their solicitor or surveyor. Also photographs are for illustration only and may depict items which are not for sale or included in the sale of the property. All sizes are approximate.

