



Tewkesbury Road | London | W13

£330,000

At 523 sq ft, with its own private balcony, this 3rd floor, one-bedroom apartment is part of the fashionable 'Jigsaw' development in close proximity to West Ealing station, an appointed 'Crossrail' station.

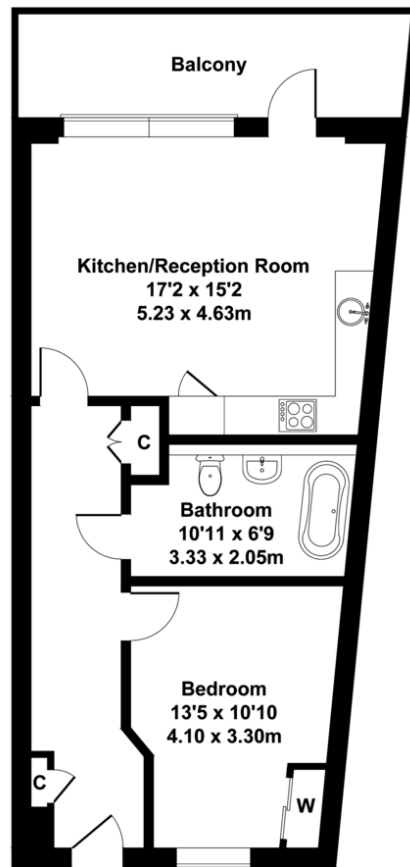
- Newly built 2013
- Large one-bedroom apartment
- Private south facing balcony
- Third floor with lift access
- No chain

goview
LONDON



Ashmead House

Approximate Gross Internal Area
523 sq ft - 48.6 sq m
(Excluding Balcony)



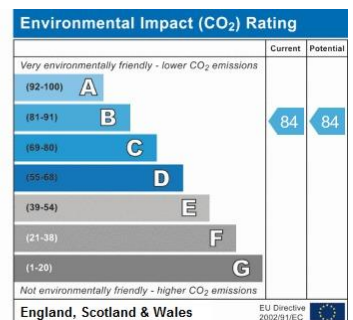
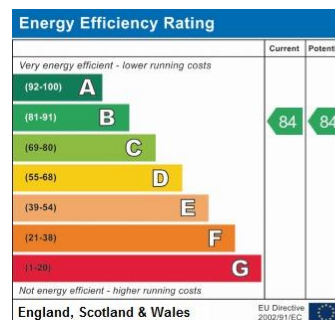
THIRD FLOOR

Not to Scale. Produced by The Plan Portal 2021
For Illustrative Purposes Only.

Contact Details

24 Station Parade
Ealing
London
W5 3LD

www.goviewlondon.co.uk
sales@goviewlondon.co.uk
020 8992 0333



Agents Note: Whilst every care has been taken to prepare these sales particulars, they are for guidance purposes only. All measurements are approximate and for general guidance purposes only and whilst every care has been taken to ensure their accuracy, they should not be relied upon and potential buyers are advised to recheck the measurements