

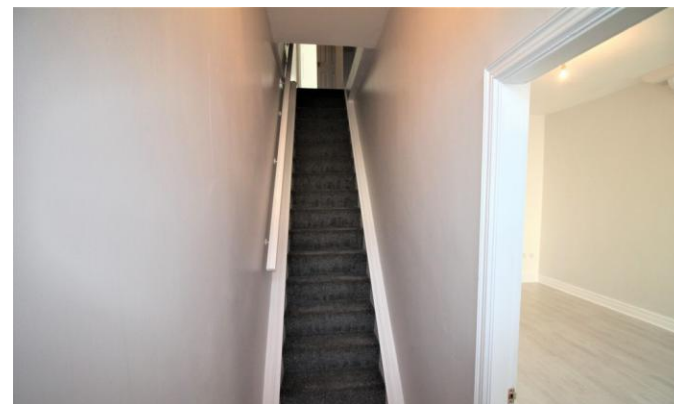


35 High Street

West Cornforth
Ferryhill
DL17 9HP

£475 pcm

Three Bedrooms
Mid-Terraced House
Spacious Accommodation
Newly Decorated Throughout
Close to Local Amenities
DSS Acceptable (with a suitable guarantor)





Rent £475pcm//Bond £475

Safe and Secure welcome to the rental market this newly decorated three storey three bedroom end of terraced house, situated in West Cornforth.

The property briefly comprises of an entrance hall, lounge, dining room, kitchen, the first floor landing leading to the two bedrooms, family bathroom and a staircase to the second floor which leads to the master bedroom.

If you are interested please give us a call on 0191 385 4477.

ENTRANCE HALL

Double glazed entrance door and staircase to first floor.

LOUNGE

19' 3" x 11' 7" (5.88m x 3.55m) Double glazed window to front, radiator and French doors to dining room.

DINING ROOM

15' 0" x 15' 7" (4.59m x 4.77m) Double glazed window to rear and radiator.

KITCHEN

12' 9" x 6' 2" (3.90m x 1.90m) Part tiled walls, fitted wall and base units, work surfaces, single drainer sink, integrated gas oven and hob, extractor hood, space for washing machine, radiator, double glazed window to side and double



glazed door to side.

MASTER BEDROOM

19' 5" x 15' 7" (5.92m x 4.75m) Double glazed window to front and radiator.

BEDROOM 2

15' 8" x 20' 8" (4.79m x 6.32m) Double glazed window to front, radiator and built in storage cupboard.

BEDROOM 3

6' 7" x 9' 1" (2.01m x 2.79m) Double glazed window to rear and radiator.

BATHROOM

Part tiled walls, white three piece suite comprising of a panelled bath with shower over, pedestal wash hand basin, low level WC, radiator and double glazed window to rear.

REAR YARD

Paved area enclosed by fenced boundaries.



Local Authority
Council Tax Band
EPC Rating

Durham County Council

A

TBC



Houghton Le Spring
24-25 Westbourne Terrace
Houghton Le Spring
Tyne And Wear
DH4 4QT

Contact
0191 3854477
info@safeandsecureproperties.c
o.uk
safeandsecureproperties.co.uk

Agents Note: Whilst every care has been taken to prepare these particulars, they are for guidance purposes only. All measurements are approximate and are for general guidance purposes only and whilst every care has been taken to ensure their accuracy, they should not be relied upon and potential buyers/tenants are advised to recheck the measurements.