

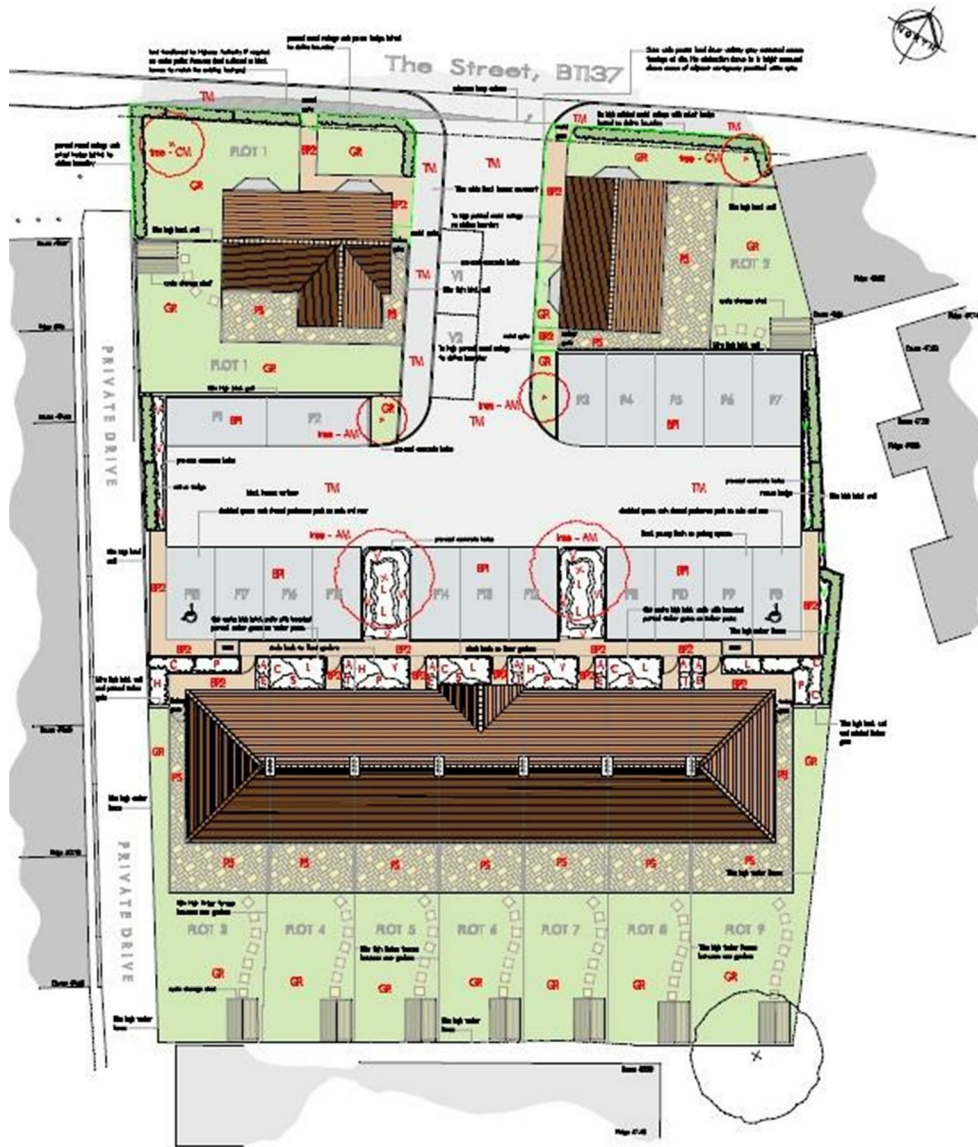
35 The Street
Latchingdon
Chelmsford
Essex
CM3 6JP

T: 01621 742 310

Bruce House
17 The Street
Hatfield Peverel
Chelmsford
CM3 2DP

T: 01245 382 555

E: info@paulmasonassociates.co.uk
www.paulmasonassociates.co.uk



The Street, Hatfield Peverel, Essex, CM3 2EQ Guide price £1,250,000

A rare opportunity has arisen to purchase this good size plot in the heart of Hatfield Peverel, a thriving commuter village, with many local amenities and within close proximity to the A12. The plot currently benefits from outline planning permission for 9 dwellings (7 terraced houses and 2 detached houses) with ample parking on a plot of 0.52 acres - Braintree District Council ref: 19/01504/REM

In order to appreciate the scale of the plot and the potential this has to offer, please contact us on 01245 382 555 for a site visit.

