



17 Salisbury Drive, Manchester, M25 0HU

£750 PCM





Area Map

### Details:

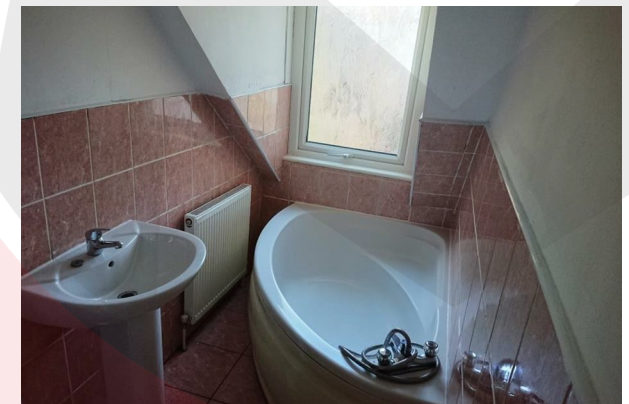
We are delighted to offer this 3 bed semi detached house situated in the heart of Sedgley Park.

The house comprises front living room, second living room with patio doors to the garden, modern fitted Koshar kitchen, 3 double bedrooms and fully tiled bathroom. The house benefits from gardens front and rear, double glazing and gas central heating.

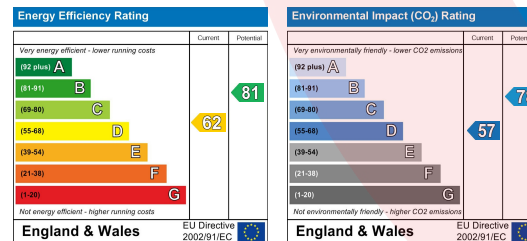
It is conveniently located for local schools, shops and houses of worship and within easy reach of the city centre and also the M60.

### Viewing

Please contact us on 0161 773 3978 if you wish to arrange a viewing appointment for this property or require further information.



### Energy Efficiency Graph



These particulars, whilst believed to be accurate are set out as a general outline only for guidance and do not constitute any part of an offer or contract. Intending purchasers should not rely on them as statements of representation of fact, but must satisfy themselves by inspection or otherwise as to their accuracy. No person in this firm's employment has the authority to make or give any representation or warranty in respect of the property.

3 Middleton Road, Manchester, M8 5DT  
 T: 0161 773 3978 | F: 0161 211 3573 | enquiries@amcomanagement.com

