



FITZJOHN
SALES & LETTINGS

62 Hargate Way,
Hampton Hargate, Peterborough,
Cambridgeshire, PE7 8DS

Tel 01733 555520
info@fitzjohnestateagents.com
www.fitzjohnestateagents.com

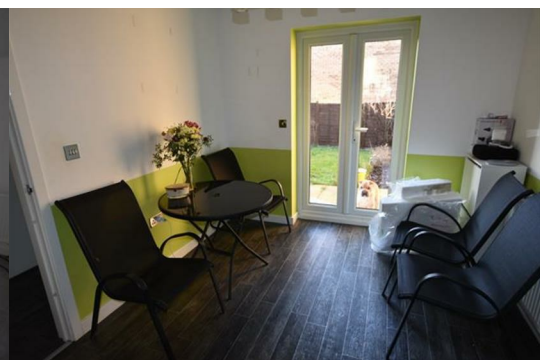
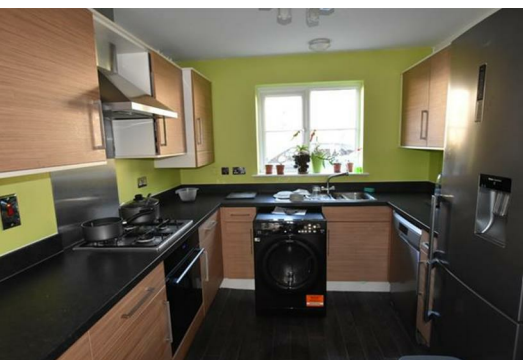


6 Moresby Way Hempsted Peterborough PE7 0LY

Offers in excess of £210,000



A modern semi detached home offered for sale within the popular location of Hempsted. The property offers living room, modern kitchen diner, cloakroom, three bedrooms, en suite, family bathroom, garden to rear and single garage. The property is situated within easy access to the A1m, City Centre and local amenities.



Entrance Hall

Storage cupboard, radiator, laminate flooring, power point(s) with ceiling light, carpeted stairs to first floor landing, door to:

Cloakroom

Fitted with two piece suite comprising, wash hand basin and close coupled WC, tiled splashback, radiator, laminate flooring with ceiling light.

Lounge 5.60m (18'5") x 3.02m (9'11")

Window to front, radiator, fitted carpet, TV point, power point(s) with ceiling spotlights, double door to rear garden.

Kitchen/Diner 5.60m (18'5") x 2.74m (9')

Fitted with a matching range of base and eye level units with worktop space over, stainless steel sink unit with mixer tap, plumbing for washing machine and dishwasher, space for fridge/freezer, fitted electric oven, built-in gas hob with extractor hood over, window to front, radiator, laminate flooring, power point(s) with ceiling spotlights, double door to rear garden.

First Floor Landing

Window to front, airing cupboard, radiator, fitted carpet, power point(s) with ceiling light, door to:

Bedroom 1 3.11m (10'3") x 2.00m (6'7")

Window to front, two storage cupboards, radiator, fitted carpet, TV point, power point(s) with ceiling spotlights, door to:

En-suite

Fitted with three piece suite comprising pedestal wash hand basin, double shower enclosure and close coupled WC, tiled surround, window to rear, radiator, vinyl flooring with ceiling light.

Bathroom

Window to rear, radiator, three piece suite comprising WC, panelled bath, wash hand basin, half tiled, shower fitted.

Bedroom 3 2.61m (8'7") x 2.21m (7'3") max

Window to front, radiator, fitted carpet, power point(s) with ceiling light.

Bedroom 2 3.29m (10'10") max x 2.61m (8'7")

Window to rear, radiator, fitted carpet, power point(s) with ceiling light.

OUTSIDE

Front garden is laid to lawn with covered entrance door. Enclosed garden to rear with panelled fencing, mainly laid to lawn with a variety of shrubs and borders. Gated side access to rear. Single garage and parking to rear.

Area Map



Floor Plans



Energy Efficiency Graph

