



SIMPLE LIFE



Harebell Gardens, Houghton Regis, Dunstable

£1,610 PCM

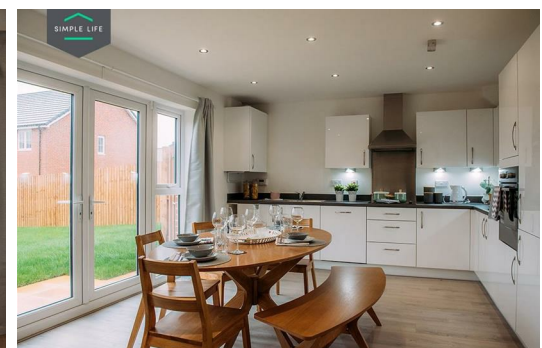
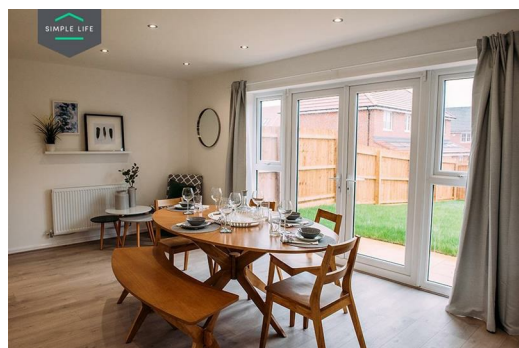
Leagrave train station is less than 5 miles away providing quick access to Bedford, Brighton, Luton, St Albans and Gatwick, whereas the M1 and the A5-M1 Link are close by to take you beyond to Milton Keynes and London. Both centres of Houghton Regis and Dunstable are within easy reach of the site offering many local shops and supermarkets as well as the nearby White Lion Retail Park which includes a Next and an M&S Simply food among many other highstreet names.

The Dee is a beautiful four bedroom modern home, built over two levels. Downstairs there is a large living room, WC and hallway leading to the rear of the property where you will find a stunning kitchen/dining area equipped with integrated kitchen appliances and contemporary units. The kitchen/dining area also benefits from French windows which take you into your own private rear garden. Upstairs you will find a family sized bathroom including a stylish white bathroom suite and four bedrooms – two doubles and two singles. The master bedroom benefits from built-in wardrobes and an en-suite bathroom fitted with its own shower and cubicle.

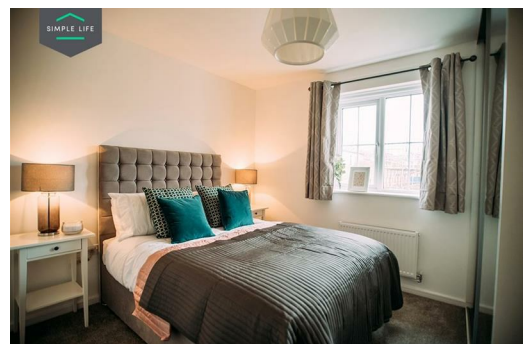
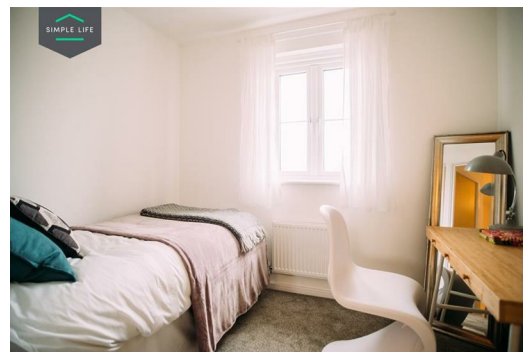
For those of you looking to get out into nature you'll find Houghton Hall Park ideal for dog walkers, jogging and family outings. The Barton Hills National Nature Reserve is close to the site to the north east, with ZSL Whipsnade Zoo a 15minute drive away. And with Luton and London nearby, the opportunities for nightlife are boundless!

With 25 Ofsted rated 'good' or 'outstanding' schools in the area including Houghton Regis Primary School and Beecroft Academy, your education needs are similarly well catered for.

To access the site use the postcode LU5 6JQ via Thorn Road.



66 Harebell Gardens, Houghton Regis, Dunstable, LU5 6RR



Energy Efficiency Rating		Environmental Impact (CO ₂) Rating	
Band	Score	Band	Score
A	92-100	A	1-10
B	81-91	B	11-20
C	69-80	C	21-30
D	55-68	D	31-40
E	39-54	E	41-50
F	21-38	F	51-60
G	1-20	G	61-70