



HENLEY GROVE COURT LAWRENCE GROVE,
HENLEAZE, BS9 4EL

GOODMAN
& LILLEY



A SUPERBLY PRESENTED, SPACIOUS PURPOSE-BUILT TWO BEDROOM TOP FLOOR APARTMENT WITH GARAGE SITUATED IN A PRIZED LOCATION JUST OFF OF HENLEAZE HIGH STREET WITH DIRECT, LEVEL ACCESS TO ALL THE WONDERFUL AMENITIES ON OFFER.

Location

Positioned on Lawrence Grove just off of Henleaze Road this apartment is truly in the most convenient of locations, benefitting from all the amenities of Henleaze High Street and close to Durdham Downs which offers ample open space for out door activities.

Accommodation

Communal Entrance

The apartment is accessed via both front or rear doors with entry phone leading to the communal hall and stairs providing access to the apartment on the top floor.

Entrance Hall

With entrance door, two built in storage cupboards and doors to:

Living / Dining Room

A wonderfully sized main reception room with ample space for living and dining areas and more. Windows to the front aspect, fitted wood floors, storage heater and doorway to the kitchen.

Kitchen

A well appointed modern kitchen with fitted wall and base units, attractive tiled surrounds, ample work surfacing, one and half bowl sink unit, integrated cooker, hob and hood, wine rack and spaces for slimline dishwasher, washing machine and fridge. Window to the front aspect.

Bedroom One

Window to the rear, radiator and built in wardrobe.

Bedroom Two

Window to the rear, fitted wooden floor.

Bathroom

Recently re fitted to now offer attractive tiled walls and floor and a modern fitted white three piece suite comprising panelled bath with shower fitted over and glass screen, low level WC and wash basin. Window to the side.

Garage and Parking

Single garage in block to rear of the property and visitor parking to the front.

-
- Generous Well Appointed Apartment
 - Excellent Location
 - Garage
 - Two Double Bedrooms
 - Close to Henleaze High Street
 - £1000 per month Possible Rent

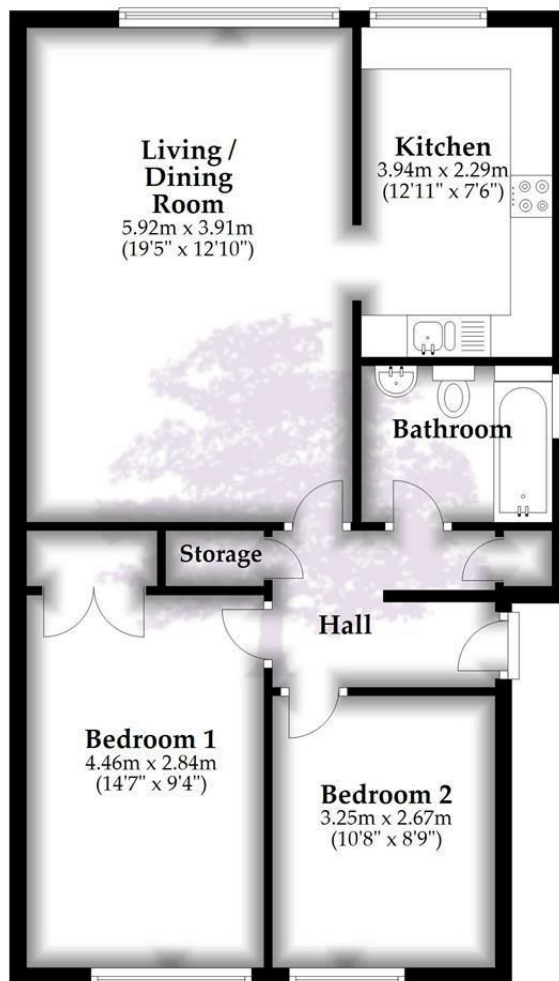


£289,000



Floor Plan

Approx. 67.7 sq. metres (728.8 sq. feet)



Total area: approx. 67.7 sq. metres (728.8 sq. feet)

HENLEAZE - 0117 2130777
henleaze@goodmanlilley.co.uk

PORTISHEAD - 01275 430440
sales@goodmanlilley.co.uk

SHIREHAMPTON - 0117 2130333
shire@goodmanlilley.co.uk

Zoopla.co.uk

rightmove



WWW.GOODMANLILLEY.CO.UK

These particulars are for general guidance only. They do not form or constitute any part of an offer or contract. Goodman & Lilley has not carried out structural surveys of the property. The services, appliances or specific fittings mentioned in these details have not been tested. Every attempt is made to ensure accuracy, however all photographs, measurements, floor plans and distances are for illustrative purposes only. They must not be relied upon when purchasing carpets and or other fixtures & fittings. Lease details, service charges and ground rents are given as a guide only. They should be checked and confirmed by a licensed solicitor prior to exchange of contracts. The copyright of all details, photographs and floor plans remain exclusive to Goodman & Lilley.