



Corney Reach Way, Chiswick, W4 2TP

£435,000

WHITMAN & CO.

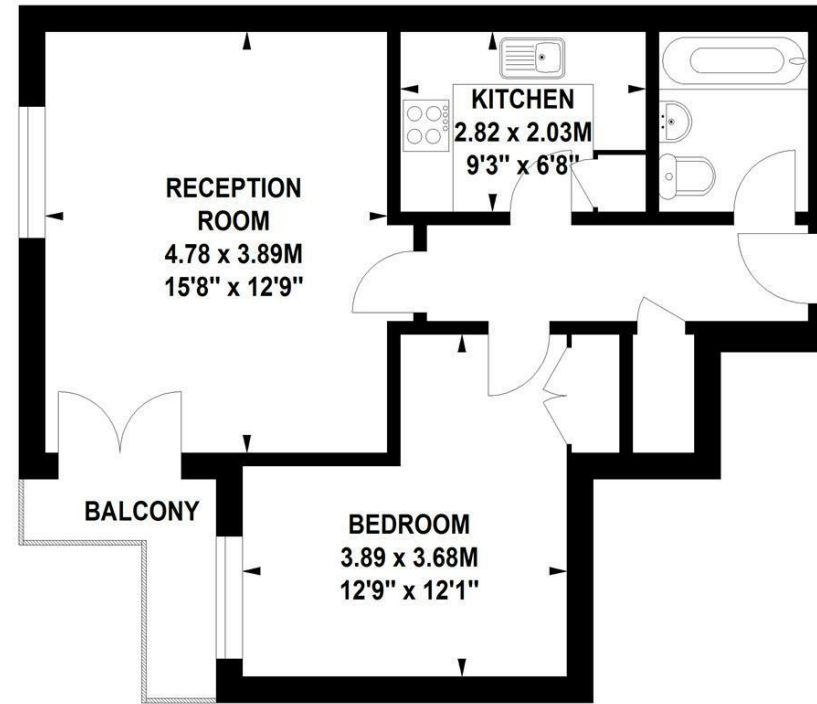
SALES · LETTINGS · COMMERCIAL

- Riverside development one bedroom flat
- Balcony
- Fully integrated kitchen
- Underground parking
- 15' dual aspect reception room
- No chain

Tenure - Leasehold
 Lease Length - 950+ years
 Ground Rent - £120 pa
 Service Charge - £1890 pa
 Local Authority - Hounslow
 Council Tax - Band D

Chesterman Court, Corney Reach, W4

Approximate gross internal area
 50.07 sq m / 539 sq ft



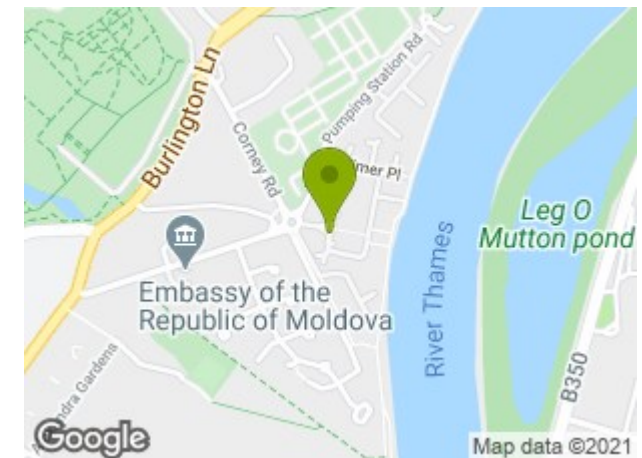
Third Floor

Not to scale, for guidance only and must not be relied upon as a statement of fact.
 All measurements and areas are approximate only

THE PROPERTY

An immaculately presented purpose built flat, set within this exclusive riverside development offering light and spacious accommodation with the added benefit of a corner balcony and secure underground parking. Accommodation comprises: 15' dual aspect reception room with French windows onto south facing balcony, fully integrated John Lewis kitchen, double bedroom, extensive built in storage, luxury shower room, secure allocated parking, 950+ year lease, automatic lift, ideally situated in this sought after private riverside development offering close proximity to all amenities. No chain.

SITUATION



5-7 Turnham Green Terrace, Chiswick, London, W4 1RG
 Tel 020 8747 8300

E-mail sales@whitmanandco.com
 Website www.whitmanandco.com