



Woodrow, London, SE18 5DH

Asking Price £290,000

COCKBURN
ESTATE AND LETTINGS AGENTS

Beautiful in its presentation, and with a great size living space this one bedroom apartment is set within the old Slazenger Factory and is ideal for first time buyers and buy to let investors. Comprising large reception room, modern kitchen with fully integrated white goods and cupboard storage space, double bedroom with en-suite shower room.

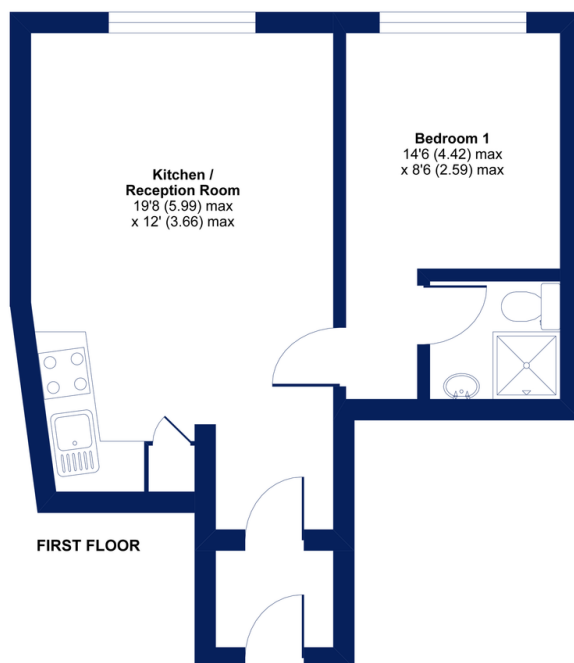
Lease Information: 125 years from 25th December 2016 Service Charge: Circa £800 p.a.



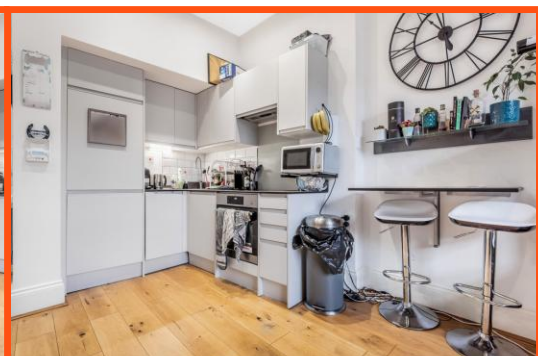
Woodrow, London, SE18

Approximate Area = 373 sq ft / 34.6 sq m

For identification only - Not to scale



Floor plan produced in accordance with RICS Property Measurement Standards incorporating International Property Measurement Standards (IPMS Residential). © richcom 2021. Produced for Cockburn Estate Agents. REF: 692181



Cockburn EA

38 Mottingham Road, Mottingham,
London, SE9 4QR

t: **020 8857 8857**
cockburn-online.co.uk

IMPORTANT: we would like to inform prospective purchasers that these sales particulars have been prepared as a general guide only. A detailed survey has not been carried out, nor the services, appliances and fittings tested. Room sizes should not be relied upon for furnishing purposes and are approximate. If floor plans are included, they are for guidance only and illustration purposes only and may not be to scale. If there are any important matters likely to affect your decision to buy, please contact us before viewing the property.