



Augustine Avenue, Studley B80 7JN | £239,950
Three Bedroom Semi Detached Property

Features:

- Three Bedrooms
- Lounge
- Kitchen
- Conservatory
- Shower Room
- Village Location

Summary:

A well maintained three bedroom semi detached property, offered with no upward chain and situated in the village location of Studley.

Description:

This three bedroom semi detached property is situated in the sought after village location of Studley. The accommodation in brief comprises:- The lounge with front aspect window and feature fireplace. The kitchen is large and spacious with modern fitted units, integrated oven and hob and space for free standing appliances. The kitchen also offers access to the rear garden and through to the conservatory. The first floor, in brief comprises:- The master bedroom, the second bedroom of good proportion with bedroom three of single use. The family bathroom has been converted into a shower room with a large shower enclosure, sink and WC.

Outside:

The front aspect of the property is approached by a paved and gravel laid drive way leading to the enclosed entrance porch. The front garden also benefits from a neatly maintained lawn edged with mature shrubbery. The rear garden has a decked patio area for dining or entertaining leading to a neatly maintained lawn with feature flower beds and timber fenced boundaries.

Location:

Augustine Avenue is near to the main village centre offering a range of high street shops, supermarkets, local schooling, public houses and restaurants. Studley is 4 miles (6 km) southeast of Redditch and 13 miles (21 km) northwest of Stratford-on-Avon.



Room Dimensions:

Porch

Hall

Lounge:

13' 0" x 10' 2" (3.98m x 3.10m)

Kitchen/Diner:

16' 6" x 10' 9" (5.05m x 3.28m)

Conservatory:

8' 7" x 8' 0" (2.62m x 2.45m)

Storage:

11' 3" x 7' 10" (3.45m x 2.40m)

Stairs To First Floor Landing

Master Bedroom:

13' 5" x 10' 0" (4.10m x 3.05m)

Bedroom Two:

10' 9" x 10' 0" (3.28m x 3.05m)

Bedroom Three:

10' 4" x 6' 5" (3.15m x 1.98m)

Bathroom:

6' 2" x 6' 2" (1.88m x 1.88m)

EPC: C

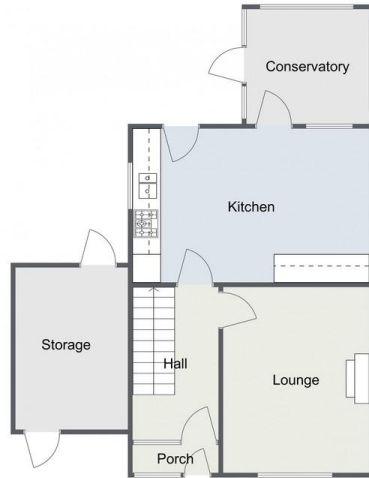
Council Tax Band: C

Tenure: Freehold

For more information on Augustine Avenue or to arrange a viewing, please call the Redditch Office on 01527 540 654



Augustine Avenue, Studley
Ground Floor



First Floor



Total Area Approx (not inc storage)
82.1 sq metres (883 sq ft)

For illustrative purposes only. Decorative finishes, fixtures & fittings do not represent the current state of the property. Measurements are approximate & not to scale. Floor Plans made using RoomSketcher.

Please read the following: These particulars are for general guidance only and are based on information supplied and approved by the seller. Complete accuracy cannot be guaranteed and may be subject to errors and/or omissions. They do not constitute a contract or part of a contract in any way. We are not surveyors or conveyancing experts therefore we cannot and do not comment on the condition, issues relating to title or other legal issues that may affect this property. Interested parties should employ their own professionals to make enquiries before carrying out any transactional decisions. Photographs are provided for illustrative purposes only and the items shown in these are not necessarily included in the sale, unless specifically stated. The mention of any fixtures, fittings and/or appliances does not imply that they are in full efficient working order and they have not been tested. All dimensions are approximate. We are not liable for any loss arising from the use of these details.