



MasonKnight



201e Tiverton Road, Selly Oak, Birmingham, B29 6DB £2,730 Per Calendar Month



Property Summary

This 6 double bedroom, 2 bathrooms student house is situated on Tiverton Road, Selly Oak

Within 8 minutes' walk to South Gate of Campus

Within 5 minutes' walk to mainline train service run from Selly Oak and Bristol Road, the main road of Selly Oak, provides a wide range of shopping, leisure facilities and restaurants.

Description of the property

The property has a lovely spacious Kitchen with all appliances, very spacious separate lounge.

The bedrooms are all of bigger than normal size double bedrooms, all the bedrooms benefit from good quality mattresses and good quality furnishings.

Kitchen with all appliances including fridge freezer, washing machine, dishwasher, cooker with oven and hob, microwave oven.

The property has 2 bathrooms/toilets with bath and shower unit, the property also has a separate toilet. Lovely separate living space with good quality sofas.

The property also benefits from gas central heating, smoke alarm system.

Outside

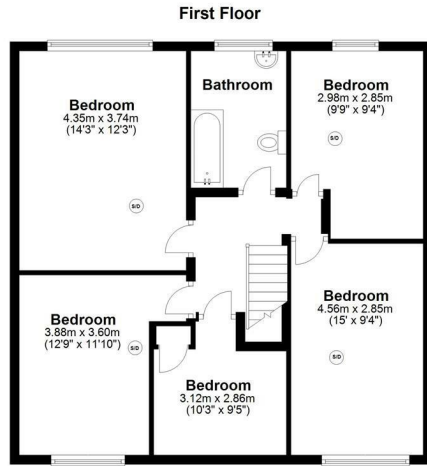
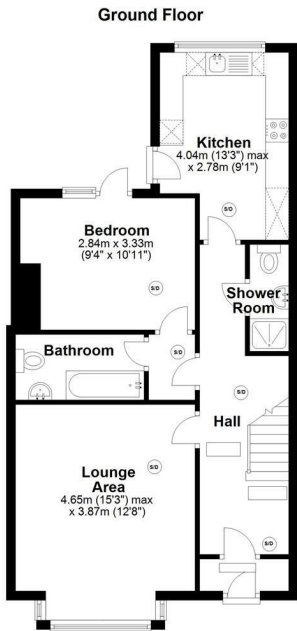
The garden to the rear provides lovely sitting area and provisions therein for Barbeques.

Prior arranged viewing with Mason Knight Only

Viewing

Please contact our MasonKnight Properties Office on 0121 472 5897 if you wish to arrange a viewing appointment for this property or require further information.





201 Tiverton Rd, Birmingham



Energy Efficiency Rating		Environmental Impact (CO ₂) Rating	
Current	Potential	Current	Potential
Very energy efficient - lower running costs		Very environmentally friendly - lower CO ₂ emissions	
(92 plus) A		(92 plus) A	
(81-91) B		(81-91) B	
(69-80) C		(69-80) C	
(55-68) D		(55-68) D	
(38-54) E	53	(38-54) E	43
(21-38) F		(21-38) F	
(1-20) G		(1-20) G	
Not energy efficient - higher running costs		Not environmentally friendly - higher CO ₂ emissions	
England & Wales		England & Wales	
EU Directive 2002/91/EC		EU Directive 2002/91/EC	



These particulars, whilst believed to be accurate are set out as a general outline only for guidance and do not constitute any part of an offer or contract. Intending purchasers should not rely on them as statements of representation of fact, but must satisfy themselves by inspection or otherwise as to their accuracy. No person in this firm's employment has the authority to make or give any representation or warranty in respect of the property.