



MILES ESTATE AGENTS

20 Staple Lane
West Quantoxhead Taunton TA4 4DQ



A lovely, extended sandstone cottage with spacious and characterful accommodation, refitted kitchen and bathroom in this sought after village with views to the Somerset coast and direct access to the Quantock Hills. Large gardens to front and rear, useful outbuildings and off road parking. A rare opportunity indeed - early viewing highly recommended and no onward chain.

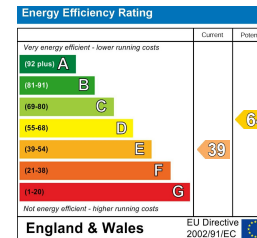
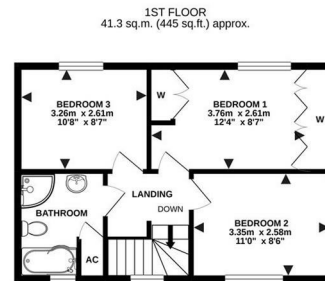
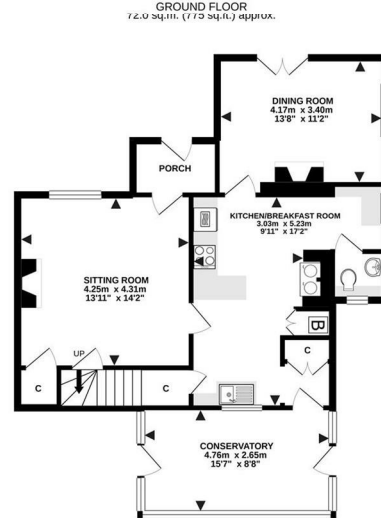




Features:

- Entrance Porch
- Refitted Kitchen
- Spacious Sitting Room with Woodburning Stove
- Separate Dining Room
- Conservatory
- Cloakroom
- 3 Double Bedrooms
- Refitted Bathroom
- Large Gardens to Front & Rear
- Useful Outbuildings
- Off Road Parking
- Council Tax Band C
- No Onward Chain





TOTAL FLOOR AREA : 113.3 sq.m. (1219 sq.ft.) approx.
Made with Metrepro ©2021



Viewings strictly through the selling agents:

Miles Estate Agents

2 Piffin Lane, Bishops Lydeard, Taunton,
Somerset, TA4 3AS

Tel: 01823 470 500

lydeard@milesestateagents.co.uk

www.milesestateagents.co.uk

rightmove

Zoopla.co.uk

onTheMarket.com

MILES ESTATE AGENTS

