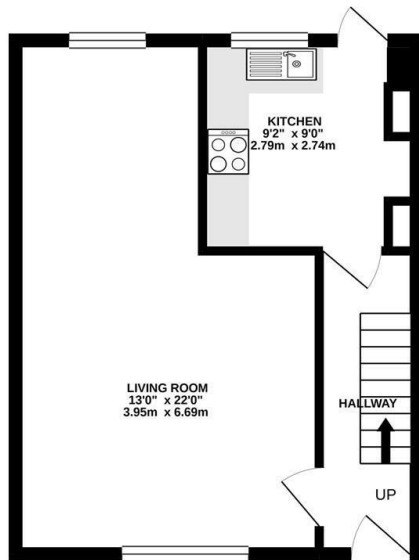


**Exeter Road
Hanworth
TW13 5NY**

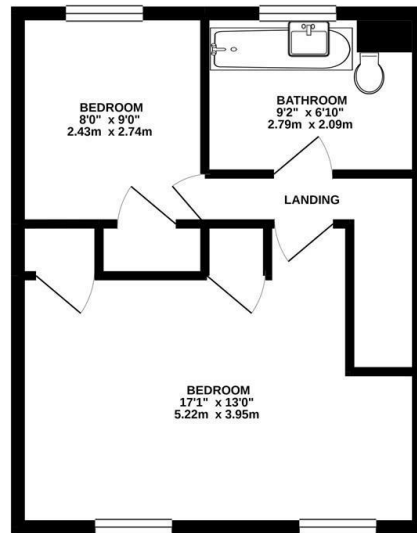
£1,325



GROUND FLOOR
374 sq.ft. (34.7 sq.m.) approx.

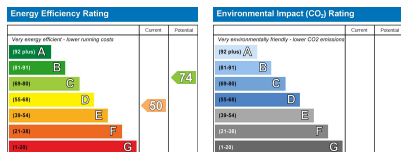


1ST FLOOR
373 sq.ft. (34.6 sq.m.) approx.



TOTAL FLOOR AREA: 746 sq.ft. (69.4 sq.m.) approx.

Whilst every attempt has been made to ensure the accuracy of the floorplan contained here, measurements of doors, windows, rooms and any other items are approximate and no responsibility is taken for any error, omission or mis-statement. This plan is for illustrative purposes only and should be used as such by any prospective purchaser. The services, systems and appliances shown have not been tested and no guarantee as to their operability or efficiency can be given.
Made with Metropix ©2021



- Newly refurbished
- Double through living/dining room
- Easy access for the A316 and M3
- Spacious family home
- Large garden with storage
- Off street parking for four cars

A larger than average two bedroom home with a large private garden.

This lovely home has just be refurbished, as you step in the front door you will find a spacious through living room seperate updated kitchen which leads to the private garden, partly paved and party lawn. Upstairs there are two double bedrooms both with wardrobe space and family bathroom.

There is parking for a few cars on the private driveway. Located in a great location with easy access to the A316 and M3.

Chase Buchanan are bonded members of ARLA PropertyMark.

For more information or to book a viewing, please contact:

020 8941 7576

hamptonhill@chasebuchanan.london

101 High Street, Hampton Hill, TW12 1NJ



Care has been taken in the preparation of these particulars, however, their accuracy is not guaranteed and they do not form part of any contract. Measurements stated must be considered maximum.