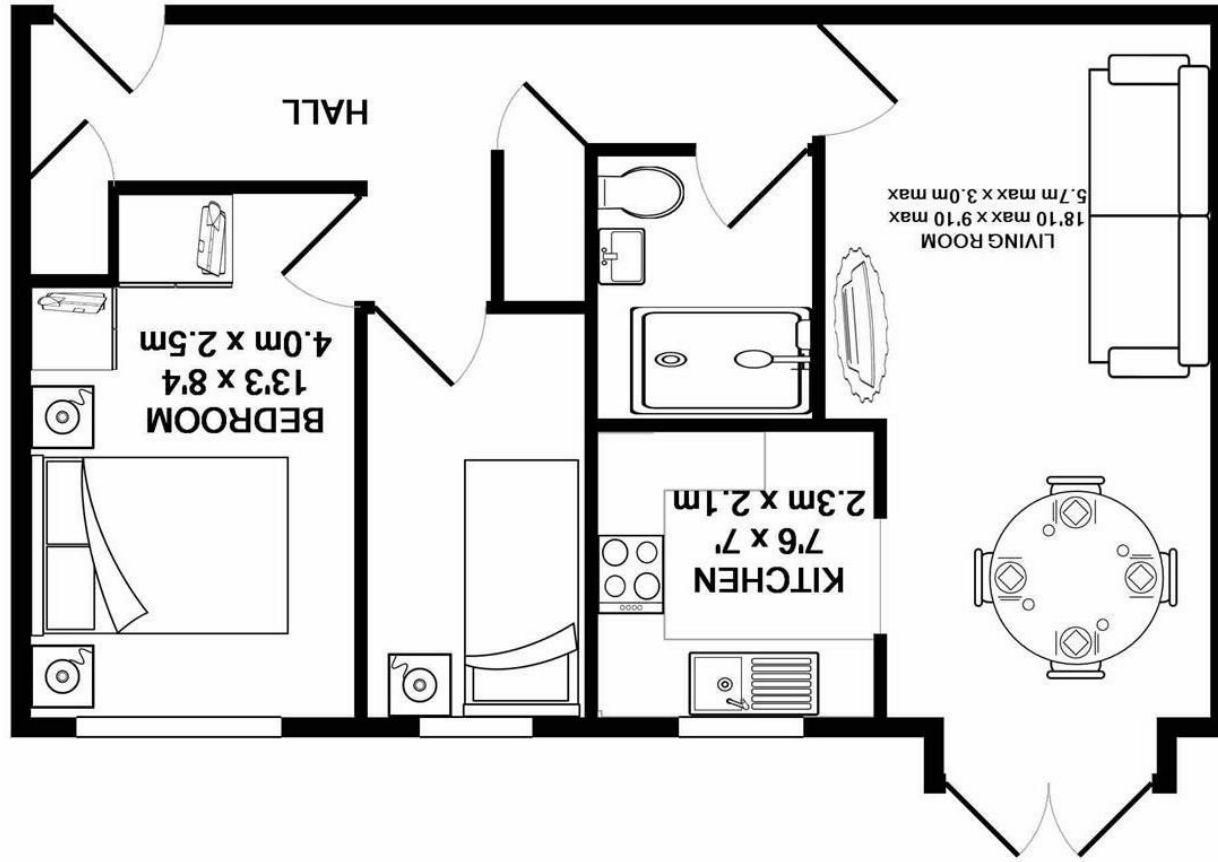


Whilst every attempt has been made to ensure the accuracy of the floor plan contained here, measurements of doors, windows, rooms and any other items are approximate and no responsibility is taken for any error, omission, or mis-statement. This plan is for illustrative purposes only and should be used as such by any prospective purchaser. The services, systems and appliances shown have not been tested and no guarantee as to their operability or efficiency can be given
 Made with Metropix ©2016

TOTAL APPROX. FLOOR AREA 522 SQ.FT. (48.5 SQ.M.)



SILVERMAN
BLACK
 PROPERTY SPECIALISTS





Leeds Court 21-25 Denmark Road

CARSHALTON, SM5 2JA

£295,500

Silverman Black is delighted to offer this good size two bedroom ground floor apartment with a small private patio. The property has new flooring and has been redecorated fully throughout. The property comprises of a good size Lounge with french doors to the private patio area. One Double and one Single Bedroom, a well equipped kitchen and a shower room. Additionally the property has excellent storage facilities, a long lease and allocated resident parking. A select and well maintained development, with attractive south facing gardens and ample parking, Located in the popular Leeds Court development, within about 5 minutes walk of Carshalton BR station. No chain. Viewing Highly recommended.

- Lovely Two Bedroom Ground Floor Apartment
- 5 minute walk to Carshalton BR Station
- Benefits from its own Patio Garden
- New flooring throughout and recently redecorated
- Allocated Parking Space, Long Lease length
- Vacant Possession, no onward chain
- Viewing highly recommended
- According to the Estate Agents Property Act 1991 we declare that the vendor of this property has an existing relationship with a member or our staff.
- EPC Band C
- 98 years remaining on the Lease

