



Jordan Fishwick

WITHINGTON
Brigadier Close



Brigadier Close, Withington M20 3BX

Guide price £185,000



The Property

A spacious, two bedroom, top floor apartment forming part of a popular purpose built development. Enjoying an excellent location which is within easy reach of both Withington and West Didsbury Villages. Ideally placed for all amenities including the Metro station and Wilmslow Road. Double glazed windows and electric heating are both installed. The accommodation comprises: entrance hall, lounge/dining room, re-fitted kitchen with gloss grey fronted cupboards with appliances, two double bedrooms and a re-fitted bathroom with white suite and chrome fittings. Externally, there is allocated parking and the development lies within well tended communal grounds and gardens.

Directions

Postcode M20 3BX

- Two bedroom top floor apartment
- Walking distance to Withington & West Didsbury
- Lounge/dining room and separate kitchen
- Electric heating & Double glazing are both installed
- Allocated off road parking
- Ideal first time purchase

Postcode - M20 3BX

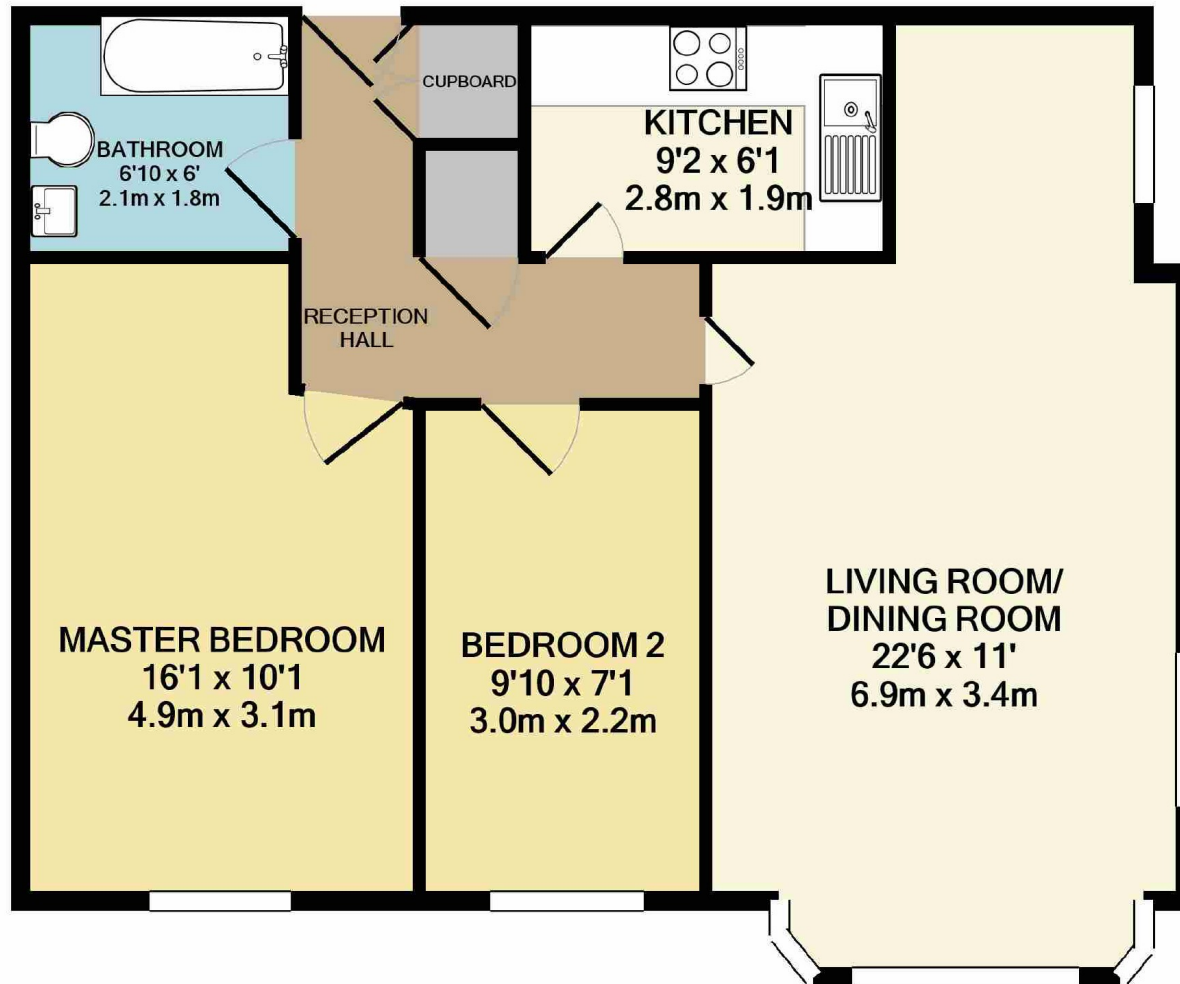
EPC Rating - D

Floor Area - 654 sq ft

Local Authority - Manchester City Council

Council Tax - Band C





TOTAL APPROX. FLOOR AREA 654 SQ.FT. (60.8 SQ.M.)

Measurements are approximate. Not to scale. Illustrative purposes only

Made with Metropix ©2020



These particulars are believed to be accurate but they are not guaranteed and do not form a contract. Neither Jordan Fishwick nor the vendor or lessor accept any responsibility in respect of these particulars, which are not intended to be statements or representations of fact and any intending purchaser or lessee must satisfy himself by inspection or otherwise as to the correctness of each of the statements contained in these particulars. Any floorplans on this brochure are for illustrative purposes only and are not necessarily to scale.

Offices also at: Wilmslow, Macclesfield, Hale, Sale, Chorlton, Glossop, Manchester & Salford

757-759 Wilmslow Road, Didsbury Village, Manchester, M20

0161 445 4480

didsbury@jordanfishwick.co.uk

www.jordanfishwick.co.uk