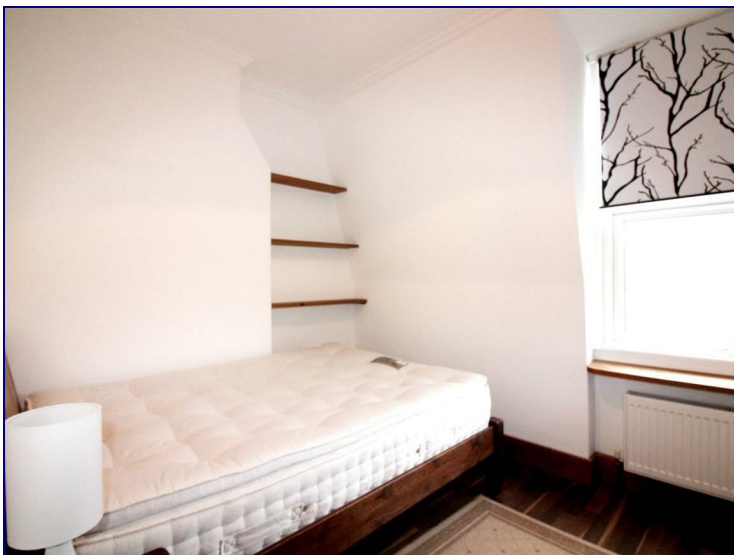


Hampden Road, London, N8 0HT



£1,050

****ONE DOUBLE BEDROOM FLAT WITH DECORATIVE ROOF TERRACE**** PRIVATE ACCESS! LOCAL EVERY DAY SHOPS WITHIN WALKING DISTANCE, STONES THROW AWAY FROM TURNPIKE LANE STATION, EASY REACH OF WOOD GREEN SHOPPING VILLAGE. TASTEFUL AND TRENDY FINISH! This property has a fully fitted modern open plan kitchen in excellent condition, three-piece bathroom suite and a spacious double bedroom. Benefits include double glazing, gas central heating and a good size roof terrace. Offered furnished or unfurnished. Awaiting EPC Rating.
AVAILABLE NOW



Energy Efficiency Rating		
	Current	Potential
<i>Very energy efficient - lower running costs</i>		
(92 plus) A		
(81-91) B		
(69-80) C		
(55-68) D		
(39-54) E		
(21-38) F		
(1-20) G		
<i>Not energy efficient - higher running costs</i>		
England & Wales	EU Directive 2002/91/EC	

Environmental Impact (CO ₂) Rating		
	Current	Potential
<i>Very environmentally friendly - lower CO2 emissions</i>		
(92 plus) A		
(81-91) B		
(69-80) C		
(55-68) D		
(39-54) E		
(21-38) F		
(1-20) G		
<i>Not environmentally friendly - higher CO2 emissions</i>		
England & Wales	EU Directive 2002/91/EC	

