



Jordanfishwick

HULME
Stretford Road



Stretford Road, Hulme
M15 5TP
Price £427,500



The Property

Investment Opportunity!

A portfolio of three apartments that are currently rented out on shorthold tenancies.

Apt 314A £470pm Unfurnished ends July 2021

Apt 316A £470pm Unfurnished ends Aug 2021

Apt 318A £550pm Unfurnished ends Feb 2022

All apartments are ground floor two bedrooms with entrance hall, living/dining room with opening to the kitchen, two bedrooms and bathroom with shower attachment. Electric heaters. Gated parking to the rear. EPC Rating C. Council Tax Band A. Images are from the three actual apartments

Directions

- Investors Only
- Three Tenanted Properties
- Ground Floor Apartments
- Two Bedroom
- Parking
- Popular Location
- EPC Rating C

Postcode - M15 5TP

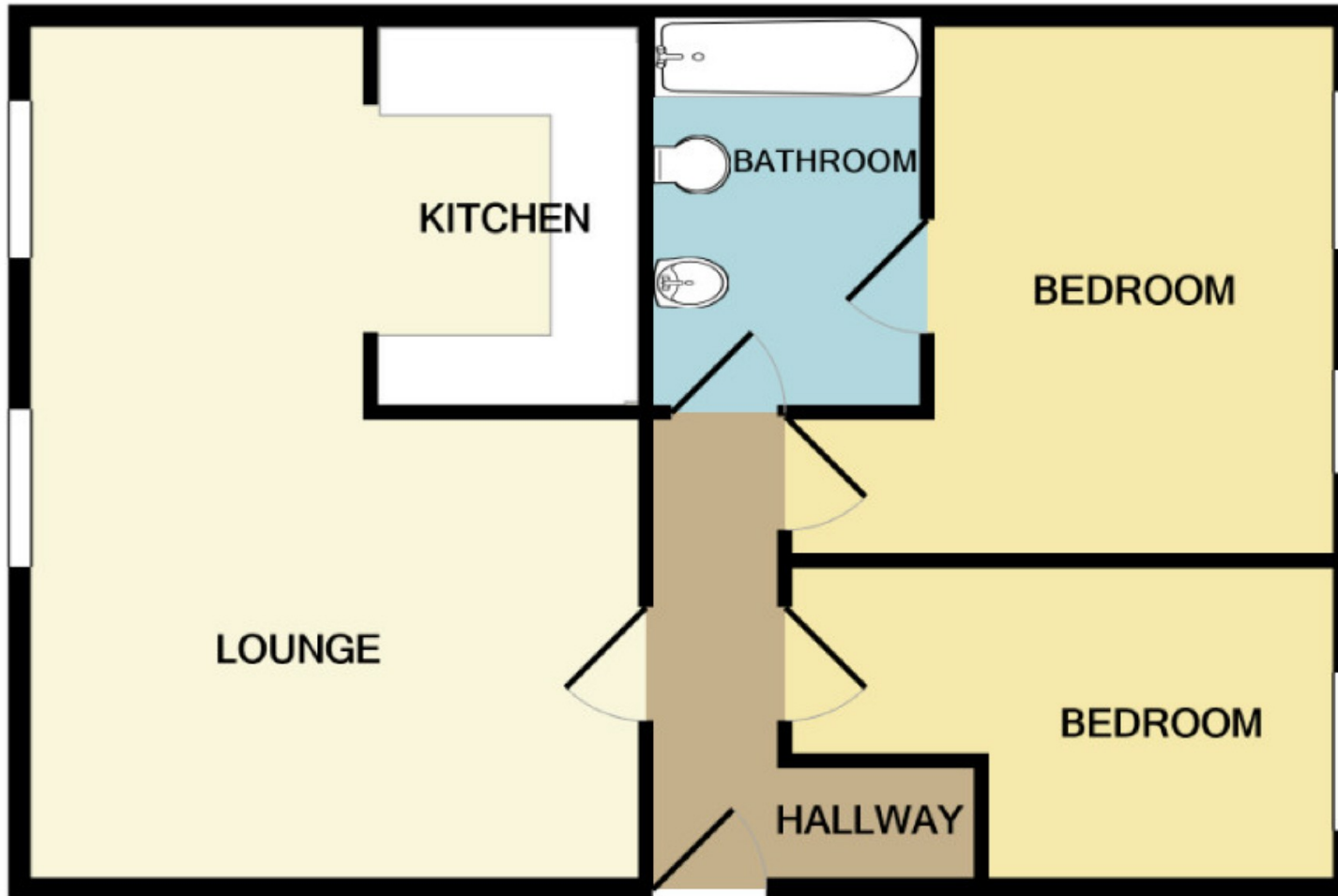
EPC Rating - C

Floor Area - 559 sq ft

Local Authority - Manchester Council

Council Tax - Band A





Measurements are approximate. Not to scale. Illustrative purposes only
Made with Metropix ©2021



These particulars are believed to be accurate but they are not guaranteed and do not form a contract. Neither Jordan Fishwick nor the vendor or lessor accept any responsibility in respect of these particulars, which are not intended to be statements or representations of fact and any intending purchaser or lessee must satisfy himself by inspection or otherwise as to the correctness of each of the statements contained in these particulars. Any floorplans on this brochure are for illustrative purposes only and are not necessarily to scale.

Offices also at:
Chorlton | Didsbury | Disley | Glossop | Hale | Macclesfield | Manchester | Sale | Wilmslow | Withington

68 The Arches, Whitworth Street West, Manchester, M1

0161 833 9499

manchester@jordanfishwick.co.uk

www.jordanfishwick.co.uk