



11 Jesse Hartley Way, Liverpool

£850 Per Month

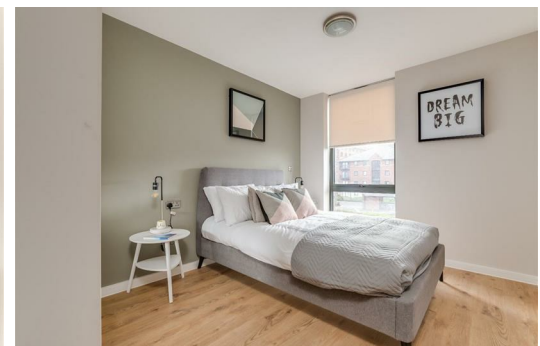
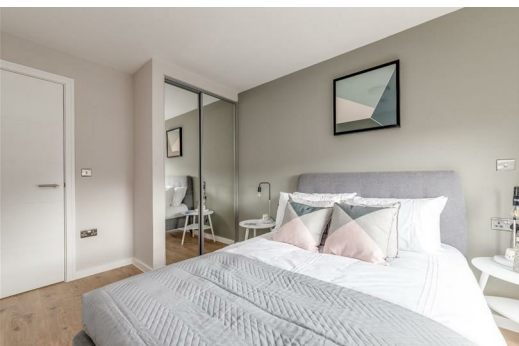
Welcome to Park Central, a stunning development of modern apartments. Situated in Liverpool's vibrant city centre is this fabulous Two bedroom apartment that's available now!

Superbly located on the Waterloo Dock, Central Quay boasts amazing waterfront views and perfect positioning for an array of local amenities. Close to Moorfields Train Station, and only 20 minutes by foot from Liverpool ONE, you'll find all the very best of the city right at your doorstep.

Inside this fifth floor apartment, you'll find an open plan living area with floor to ceiling windows, and a classy yet neutral décor. Fully furnished to a high standard, you'll have modern style running throughout. The kitchen is finished with an elegant design, and fully equipped with integrated appliances.

The bedroom's, double in size, offers plenty of floor space. The bathroom is presented to a high standard, and features glossy appliances and beautiful chic tiling.

This sleek pad is the ideal spot for working professionals and individuals, a student, or couples. You'll have a vast choice of bars, restaurants and coffee shops close by in the Waterloo Dock area, and you're just a few moments away from the very best of the city action!



Park Central, 906 11 Jesse Hartley Way, Liverpool, Merseyside, L3 0AZ



Energy Efficiency Rating			Environmental Impact (CO <sub>2</sub> ) Rating		
Score	Band	Range	Score	Band	Range
92-100	A	100-100	100-100	A	100-100
81-91	B	100-100	95-100	B	100-100
69-80	C	100-100	85-94	C	100-100
55-68	D	100-100	75-84	D	100-100
39-54	E	100-100	65-74	E	100-100
21-38	F	100-100	55-64	F	100-100
1-20	G	100-100	45-54	G	100-100