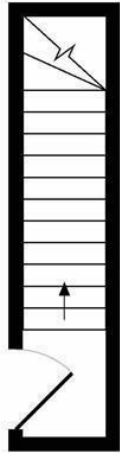


**The Grove
Teddington
TW11 8AT**

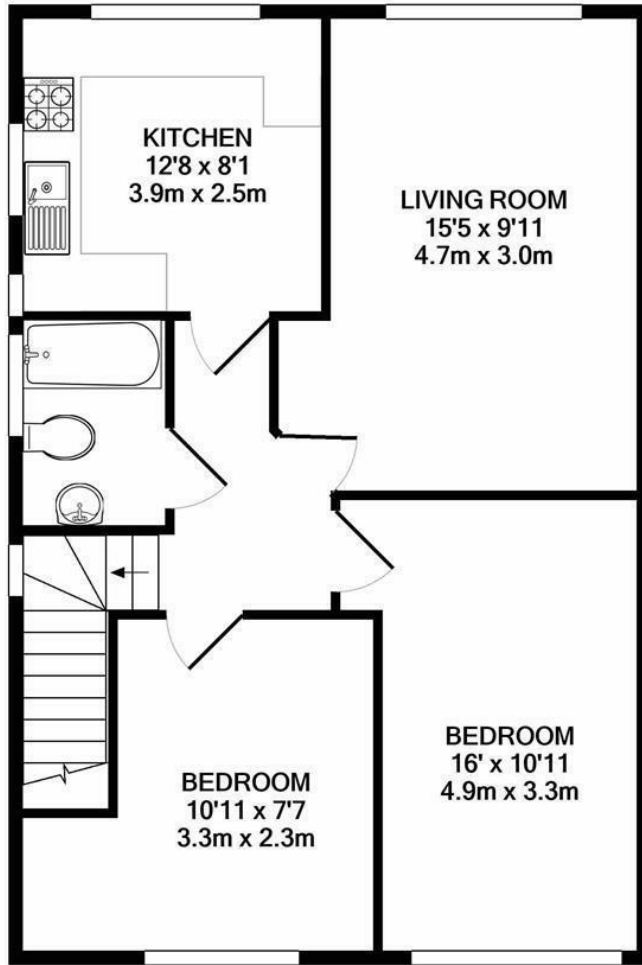
£1,495

ChaseBuchanan





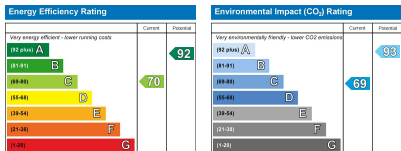
GROUND FLOOR
APPROX. FLOOR
AREA 49 SQ.FT.
(4.6 SQ.M.)



FIRST FLOOR
APPROX. FLOOR
AREA 689 SQ.FT.
(64.0 SQ.M.)

TOTAL APPROX. FLOOR AREA 738 SQ.FT. (68.6 SQ.M.)

Produced solely for Chase Buchanan
Made with Metropix ©2020



- Two double bedrooms
- Spacious and bright
- Sought after location
- Private Garden
- Close to Teddington Train Station
- Well presented throughout

Available to move into immediately is this bright first floor maisonette which is located in a quiet cul de sac close.

This good size two double bedroom maisonette offers space and light with a good size kitchen separate to the spacious living room and family bathroom. This lovely property has also the bonus of a private garden.

The Grove is located off the Cambridge Road, a short walk to Teddington High Street with its local bars, shops, restaurants and 0.4 miles from Teddington mainline Station.

Chase Buchanan are bonded members of ARLA PropertyMark.

For more information or to book a viewing, please contact:

020 8941 7576

ChaseBuchanan

101 High Street, Hampton Hill, TW12 1NJ