

Avenue Road  
Hampton  
TW12 2BH

£635,000

ChaseBuchanan





## Avenue Road, TW12

Approximate Gross Internal Area = 105.3 sq m / 1133 sq ft

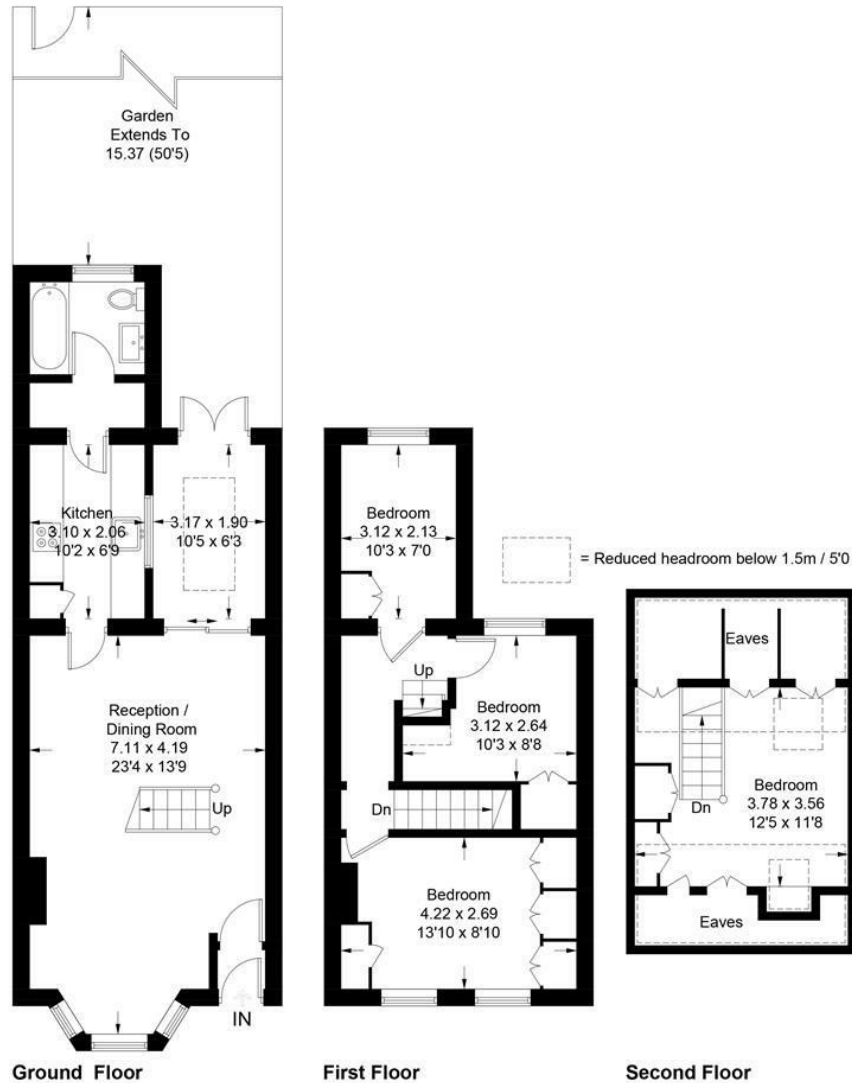
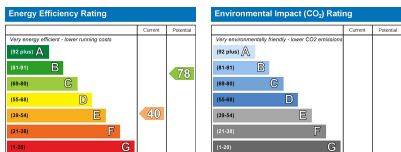


Illustration for identification purposes only, measurements are approximate, not to scale. floorplansUsketch.com © (ID722431)



Care has been taken in the preparation of these particulars, however, their accuracy is not guaranteed and they do not form part of any contract. Measurements stated must be considered maximum.

- Viewings accompanied by Chase Buchanan
- Charming period home
- Popular village location
- Three bedrooms
- Secluded rear garden
- Chain free

This charming period terraced home is located on the popular Avenue Road within the heart of Hampton village.

The ground floor provides a bright through reception room with bay window and a working gas fireplace, a separate kitchen and a lovely dining area with large skylight and doors out to the garden, maximising the light, plus a smart, modern bathroom.

Upstairs, there are three bedrooms and a loft room, with the potential to create a loft dormer. STPP.

Outside there is a secluded garden, which is approx. 55ft, with a large wooden shed.

Ideally placed for all that Hampton village offers, with an array of boutique shops, cafes and restaurants. Transport links are good, with regular trains into London Waterloo, easy access to the M3 and M25 motorways and regular buses into both Richmond and Kingston town centres. There are many highly regarded schools locally, both state and private. Avenue Road is also within a short walk of the river Thames, the royal deer parks and Hampton Court Palace

The property is offered to the market chain free and early viewings are highly recommended.

For more information or to book a viewing, please contact:

**Chase Buchanan**

101 High Street, Hampton Hill, TW12 1NJ