



## LAINSON STREET SW18



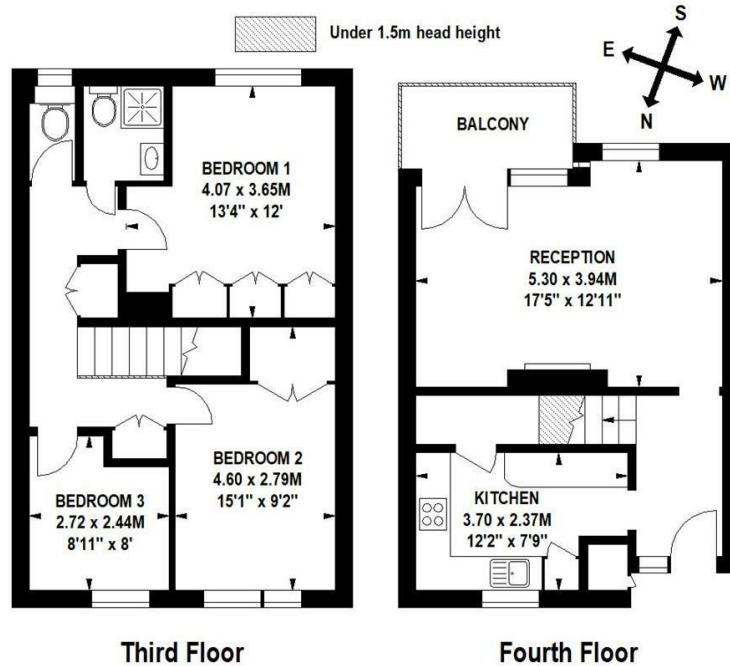


- 3 BEDROOM MAISONETTE • NEWLY REFURBISHED • CONTEMPORARY FITTED KITCHEN • BATHROOM & SEPARATE WC • PRIVATE BALCONY • COMMUNAL GARDEN • CLOSE TO SOUTHFIELDS TUBE STATION • AVAILABLE 26TH FEBRUARY

Fantastic 3 bedroom maisonette recently refurbished throughout to a very high standard with spacious wood flooring reception, separate contemporary fitted kitchen with excellent storage and breakfast bar, private balcony, shower room, separate WC and access to a communal garden.

### Lainson Street, SW18

Approximate Gross Internal Area 84 sq m / 904 sq ft



Floor Plan produced for Finlay Brewer by Mays Floorplans © . Tel 020 3397 4594  
 Illustration for identification purposes only, not to scale  
 All measurements are maximum, and include wardrobes and window bays where applicable

138 Shepherds Bush Road, London, W6 7PB  
 Tel: 020 7371 4071 [lettings@finlaybrewer.co.uk](mailto:lettings@finlaybrewer.co.uk)