

**For Rent**



## People Make Places



**St Martin's Lane, Covent Garden WC2**

1 bedrooms | 614 sq ft

£675 pw





An exceptionally well sized, recently refurbished, one bedroom flat to rent in Covent Garden. Situated on the 3rd floor (with lift), the contemporary kitchen is open plan to the reception room with the double bedroom with fitted storage and there is a large bathroom with separate shower and bath.

#### What you need to know

- One bedroom
- One bathroom (with separate shower)
- Third floor (with lift)
- Recent refurbishment
- Wooden floors throughout
- Unfurnished
- Cast iron radiators
- Modern
- Available late November
- Close to Leicester Square & Charing Cross undergrounds



**St Martin's Lane, Covent Garden WC2**





### Overview

Available towards the end of November, on an unfurnished basis. Landlord offers a 3 year lease with a mutual 6 months rolling break clause, subject to contract.

Westminster Council tax band: E.

### WHAT WE LOVE:

- Sleek modern kitchen
- Good size bedroom
- Cast iron radiators
- Interior designed throughout
- Close to Trafalgar Square & National Portrait Gallery

### WHAT YOU NEED TO KNOW:

- 3rd floor with lift access
- Video entry system
- Secondary glazing
- Moments from Leicester Square tube
- Separate bathtub and shower stall



# People Make Places

London is collection of inspiring urban villages and one of the most exciting places in the world to live, work & play.

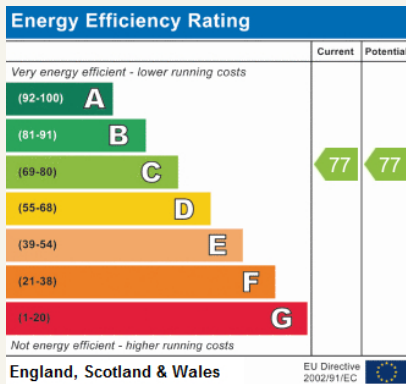
We work with both property owners and their occupiers, sharing the story of these vibrant neighbourhoods, conveying the unique soul & energy to future custodians, the people who'll keep them buzzing.

And unlike many real estate businesses we're not just about buildings, because streets & buildings don't make a neighbourhood.

We're about building relationships, because **people make places**.

MISINTERPRETATION ACT [COPYRIGHT] DISCLAIMER: Tavistock Bow Ltd for themselves and for the vendor(s) of this property whose agents they are, given notice that: 1. These particulars do not constitute, nor constitute any part of, an offer or contract. 2. None of the statements contained in these particulars as to the property are to be relied on as statements or representations of fact. 3. Any intending purchaser or lessee must satisfy themselves by inspection or otherwise as to the correctness of each of the statements contained in these particulars. 4. The vendor(s) or lessor(s) do not make or give and neither Tavistock Bow Ltd nor any person in their employment has any authority to make or give any representation or warranty whatever in relation to this property. Finance Act 1989, Unless otherwise stated all prices and rents are quote exclusive of VAT. Property Misrepresentation Act 1991; These details are believed to be correct at the time of compilation but may be subject to subsequent amendment.

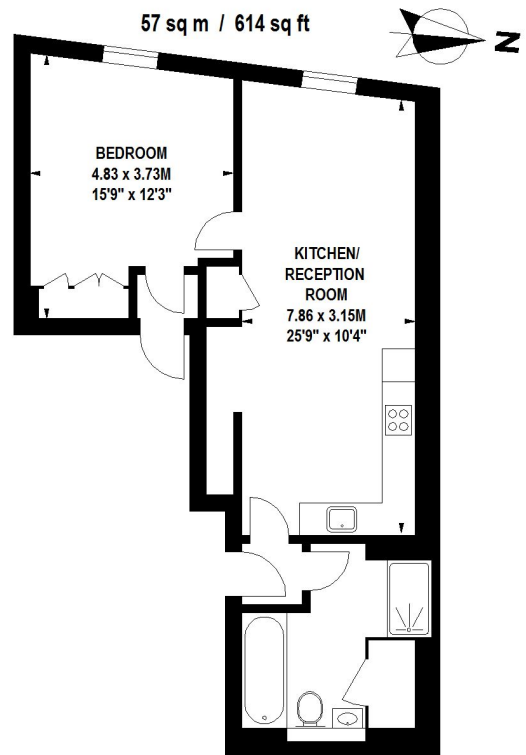
Follow us:     @tavistockbow



## St. Martin's Lane, WC2

Approximate gross internal area

57 sq m / 614 sq ft



### Third Floor

Floor Plan produced for Tavistock Bow by Mays Floorplans © . Tel 020 3397 4594  
Illustration for identification purposes only, not to scale  
All measurements are maximum, and include wardrobes and window bays where applicable

**tavistockbow**

21 New Row, Covent Garden,  
London, WC2N 4LE

t: 020 7477 2177  
e: hello@tavistockbow.com  
w: tavistockbow.com



**St Martin's Lane, Covent Garden WC2**