

# MONTPELIER TERRACE



NASHWATSON

beautifully imperfect since 2009

# A modern, minimalist twist..

A Grade II Listed first floor two bedroom apartment with a balcony. Located in Brighton City centre. The apartment has a living room - that accesses the balcony, two bedrooms, a walk-in wardrobe, and a shower room. The living room is bright and airy, and the period windows are beautiful. This is a wonderful living space in a great location. A fine example of a Grade II Listed apartment with a modern, minimalist twist. Well worth a visit.

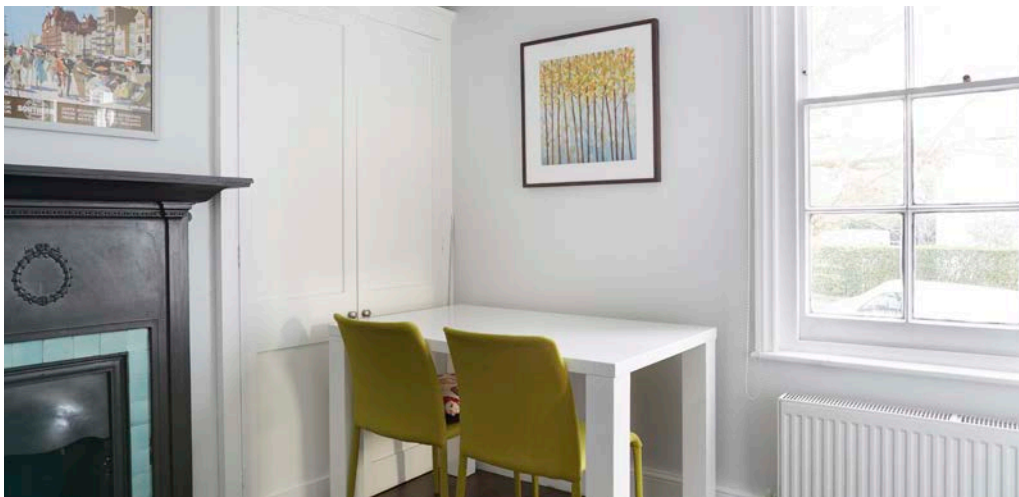
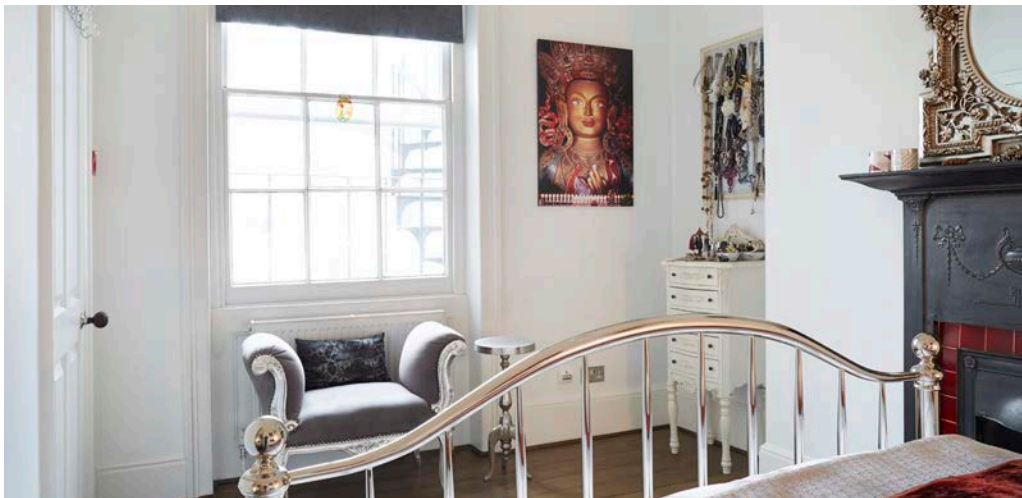
NASHWATSON

beautifully imperfect since 2009

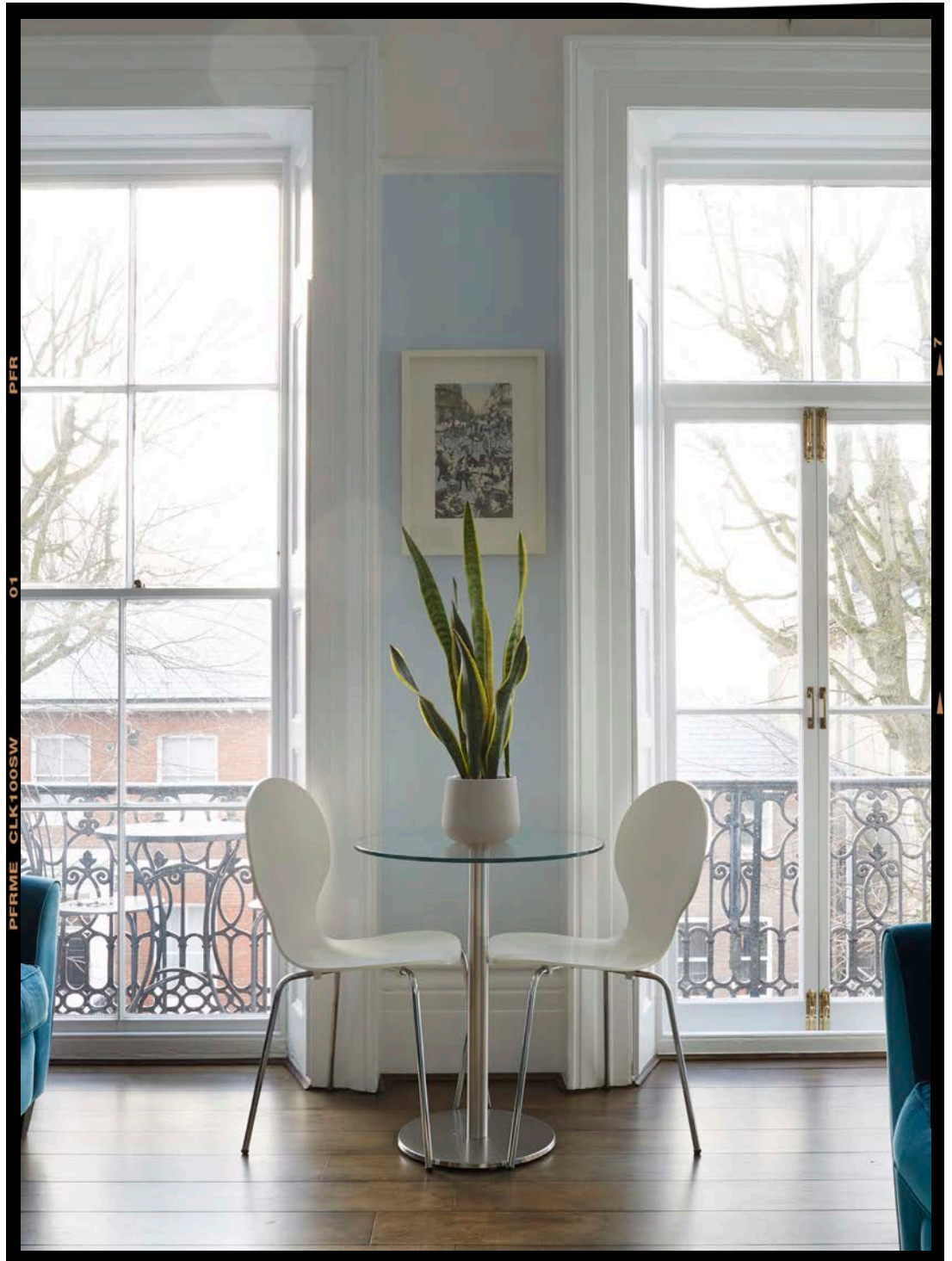


NASHWATSON  
beautifully imperfect since 2009

Montpelier Terrace



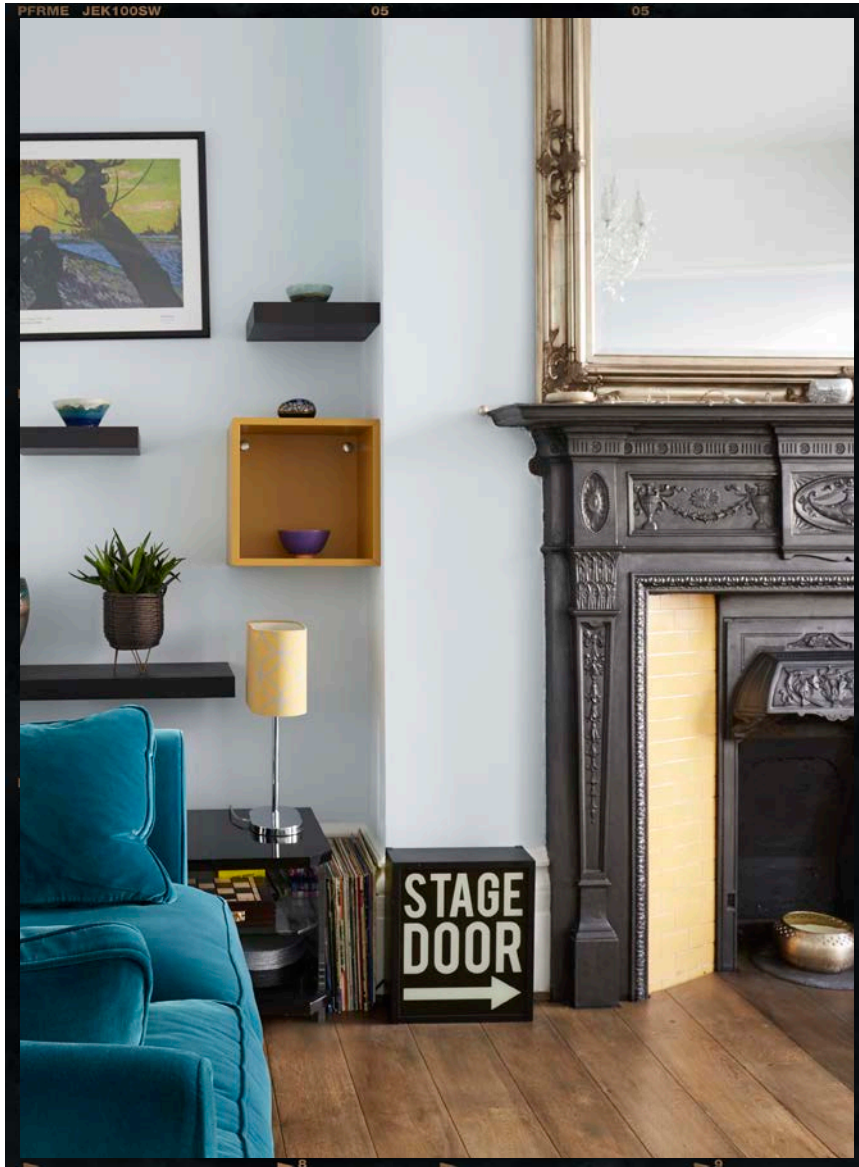
The particulars we have prepared in this brochure are just a guide. No survey has been carried out and room sizes are approximate. Whilst we take reasonable care to ensure its accuracy, we cannot guarantee this and do not supply any warranty or representation of any kind in relation to the content herein.



HOME@NASHWATSON.COM 01273 733 500

MONTPELIER TERRACE

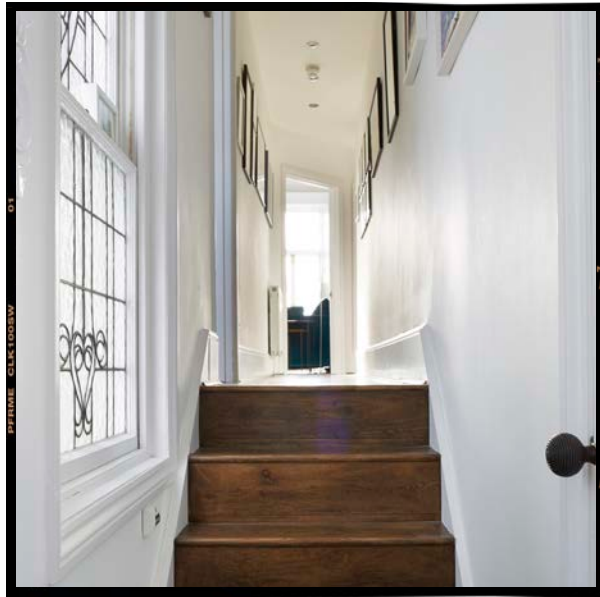
APARTMENT 2 BEDROOMS



HOME@NASHWATSON.COM 01273 733 500

NASHWATSON  
beautifully imperfect since 2009

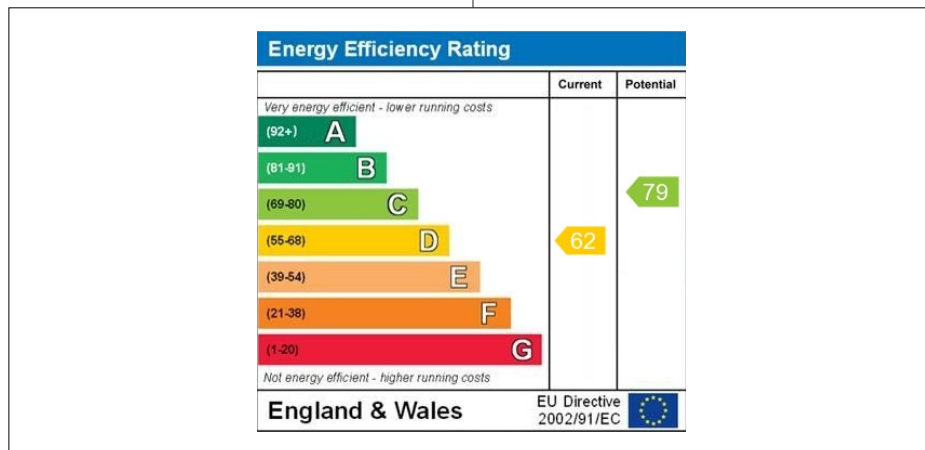
MONTPELIER TERRACE



NASH WATSON  
 69 A&B CHURCH ROAD  
 HOVE  
 BN3 2BB  
 01273 733 500  
 HOME@NASHWATSON.COM

MONTPELIER TERRACE

APARTMENT 2 BEDROOMS



ENERGY PERFORMANCE GRAPH..

The particulars we have prepared in this brochure are just a guide. No survey has been carried out and room sizes are approximate. Whilst we take reasonable care to ensure its accuracy, we cannot guarantee this and do not supply any warranty or representation of any kind in relation to the content herein.

Our redress scheme is The Property Ombudsman [www.tpos.co.uk](http://www.tpos.co.uk) Nash Watson Ltd have client money protection insurance provided by Client Money Protect Membership number: CMP003294 [www.clientmoneyprotect.co.uk](http://www.clientmoneyprotect.co.uk)

Nash Watson Ltd trading as 'Nash Watson' is a company registered in England. Registration number: 6913269. Registered Offices: (no correspondence please) 23 St Leonards Road, Bexhill On Sea, East Sussex, TN40 1HH.

