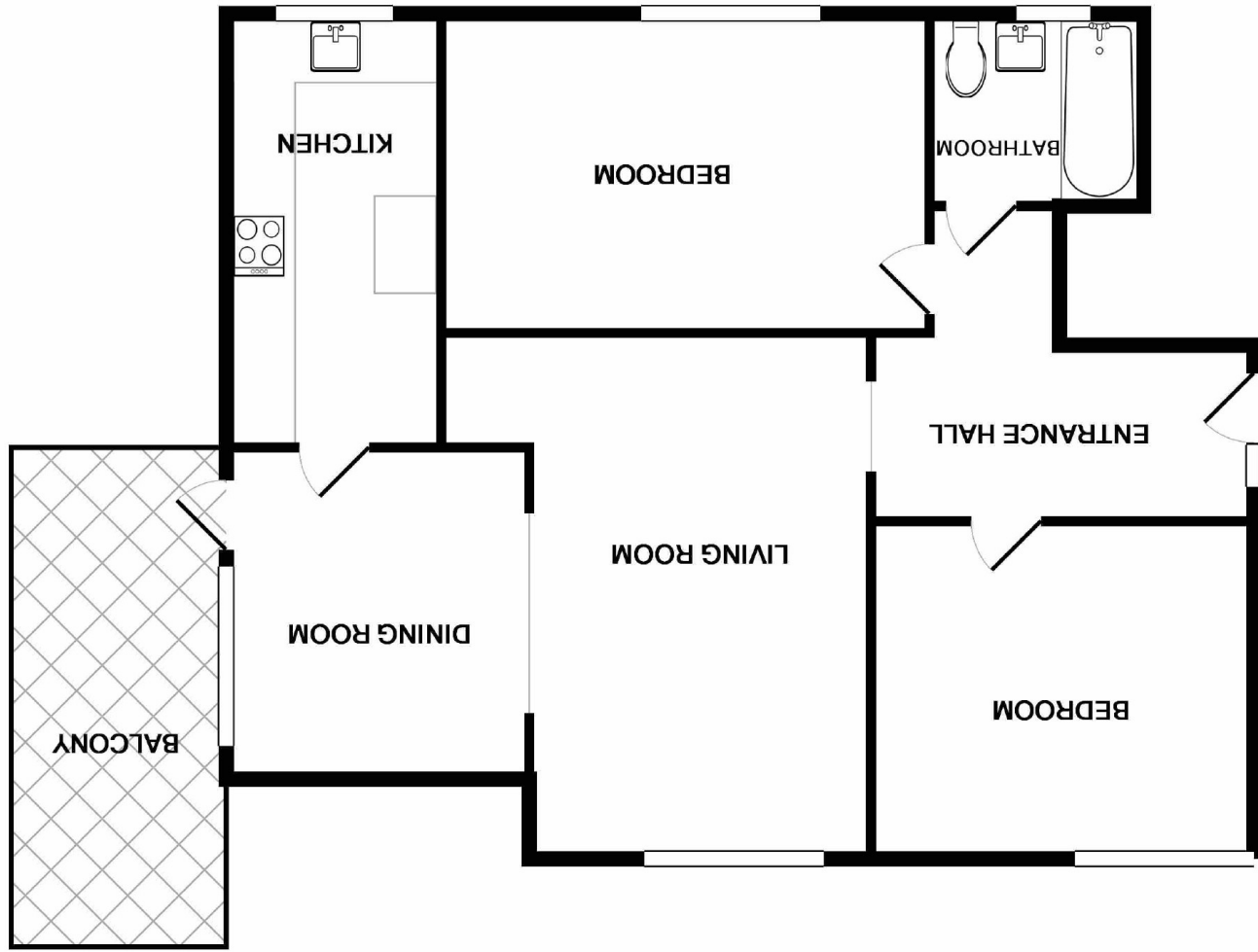


These particulars are believed to be accurate but they are not guaranteed and do not form a contract. Neither Jordan Fishwick nor the vendor or lessor accept any responsibility in respect of these particulars, which are not intended to be statements or representations of fact and any intending purchaser or lessee must satisfy himself by inspection or otherwise as to the correctness of each of the statements contained in these particulars. Any floorplans on this brochure are for illustrative purposes only and are not necessarily to scale.

Whilst every attempt has been made to ensure the accuracy of the floor plan contained here, measurements of doors, windows, rooms and any other items are approximate and no responsibility is taken for any error, omission, or mis-statement. This plan is for illustrative purposes only and should be used as such by any prospective purchaser. The services, systems and appliances shown have not been tested and no guarantee as to their operability or efficiency can be given
Made with Metropix ©2019





Denewood Court, Wilmslow SK9 5HP

£1,250 Per calendar month



The Property

WILMSLOW - AVAILABLE MID FEBRUARY PART FURNISHED Located on this quiet road in central Wilmslow is this extremely spacious two bedroom apartment with garage, allocated parking for one car and private sunny balcony overlooking the well kept communal gardens. Communal entrance hall leading to private entrance hall with storage, spacious lounge overlooking the communal gardens, dining area with door to balcony, modern fitted breakfast kitchen with electric hob and oven, fridge freezer, washing machine and separate dryer, two double bedrooms one with fitted wardrobes, second double bedroom. VIEWING RECOMMENDED Contact Wilmslow 01625 536300 £1250.00pcm

Directions

- CENTRAL LOCATION
- GARAGE
- OFF ROAD PARKING
- SPACIOUS INTERIOR
- BALCONY

Postcode - SK9 5HP

EPC Rating - D

Floor Area - sq ft

Local Authority -

Council Tax - Band

