



Vulcan Mill, Malta Street, Manchester

£725 PCM

This characteristic apartment conversion is an excellent home for the stylish city dweller. With one double bedroom, and everything you could need from a living space, this pad would suit a couples, singles and professionals alike! Previously a working factory during Manchester's Cottonopolis era, Vulcan Mill offers the comfort of a high quality development with a truly unique flavour.

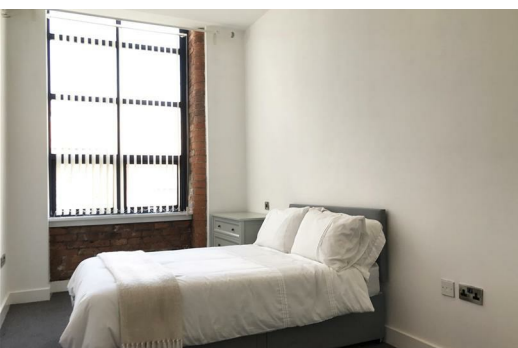
This one-bedroom apartment for sale offers all the comforts of modern living without losing the character of its roots. Step inside this apartment that's beaming with history, and you'll find an open plan living space with a corner kitchen finished in stylish cream gloss. This well-sized room leads on to a useful, separate storage cupboard. With sleek wooden flooring, the room offers practically!

The double bedroom is everything you could need from a simple city based pad, as is the stylish bathroom – comprising of a three piece suite and modern tiling.

Vulcan Mill overlooks a big stretch of green land which is bustling in the summer, and is close to all of New Islington's/Ancoats' newly-built amenities. There's a Metrolink tram stop nearby to take you into the heart of the city, and the Etihad stadium is a short walk in the opposite direction.

If you're interested in having a closer look, or have any questions, do get in touch with our friendly sales team.

Available now



Kitchen/Living area
26'11" x 12'7" (8.21 x 3.85)

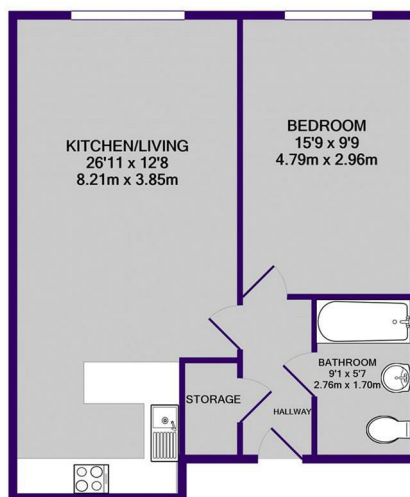
Open plan kitchen and living area. High ceiling and large windows create a lovely living space. Fitted 'U' shaped kitchen to the rear of the room.

Bedroom
15'8" x 9'8" (4.79 x 2.96)

Good size double bedroom.

Bathroom
9'0" x 5'6" (2.76 x 1.70)

Modern three piece bathroom suite.



TOTAL APPROX. FLOOR AREA 574 SQ.FT. (53.3 SQ.M.)

Whilst every attempt has been made to ensure the accuracy of the floor plan contained here, measurements of doors, windows, rooms and any other items are approximate and no responsibility is taken for any error, omission, or mis-statement. This plan is for illustrative purposes only and should be used as such by any prospective purchaser. The services, systems and appliances shown have not been tested and no guarantee as to their operability or efficiency can be given
Made with Metropix ©2020



Energy Efficiency Rating				Environmental Impact (CO ₂) Rating			
Rating	Score	Current	Target	Rating	Score	Current	Target
A	92-100			A	1-2		
B	81-91			B	3-4		
C	69-80			C	5-6		
D	55-68			D	7-8		
E	39-54			E	9-10		
F	22-38			F	11-12		
G	1-21			G	13-14		