



Prince Court, Canning Town
London E16

GARTONJONES.COM



Prince Court, Canning Town London, E16

GARTON JONES.COM

49 Marsham Street Lettings:
London +44 (0) 20 7340 0480
SW1P 3DP westminster@gartonjones.com
www.gartonjones.com

£462 Per Week

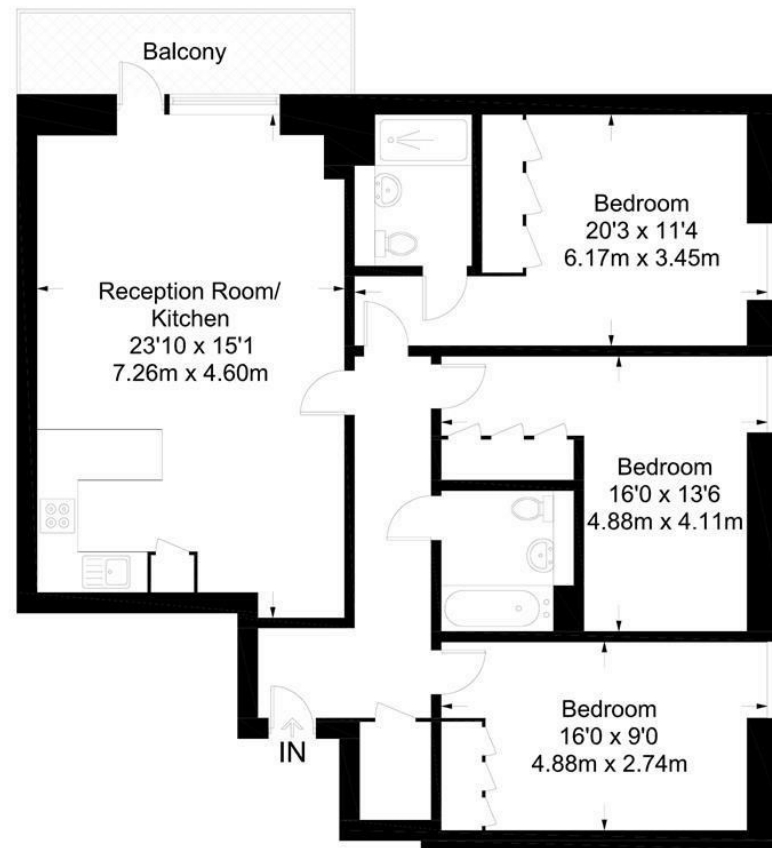
A 3 DOUBLE BEDROOM apartment to rent (with lift) in the popular ROYAL GATEWAY development. The property benefits from an open plan reception room with an integrated kitchen with Smeg appliances, there are 2 modern bathrooms (1 en-suite), a private balcony, wood flooring and good storage including fitted wardrobes to the bedrooms. Development features will include a daytime concierge service, podium landscaped gardens and secure underground parking to certain apartments. When fully completed Royal Gateway will also become a thriving market style pedestrianised walkway, surrounded by 13 commercial units, creating a vibrant new 'cosmopolitan market' atmosphere for the entire community. The development sits just minutes from Canary Wharf and the City by DLR and journey times will decrease further when the new Crossrail interchange at Custom House is introduced in 2018.

- 1104 sq.ft (102.6 sq.m)
- 3 Double Bedroom Apartment
- Open Plan Reception Room
- Kitchen with Smeg Integrated Appliances
- 2 Bathrooms (1 En-suite)
- Private Balcony
- Landscaped Gardens
- Concierge
- Close to Local Amenities Including Shops, Restaurants & Transport Links
- Walking Distance to Canning Town Station



Prince Court

Approximate Gross Internal Area = 1104 sq ft / 102.6 sq m



Third Floor

Not to scale, for guidance only and must not be relied upon as a statement of fact.
All measurements and areas are approximate only and have been prepared in accordance with the current edition of the RICS Code of Measuring Practice.

