



St. Luke's Avenue, Clapham, SW4

2 bedroom flat for sale

£550,000

Property Details

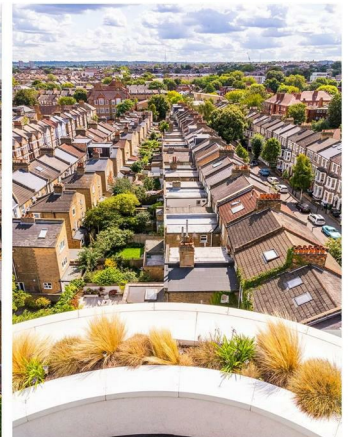
A well-proportioned two double bedroom apartment within an iconic landmark building on thriving Clapham High Street. This fantastic apartment benefits from an unrivalled location, not just in terms of the high street but also it's peaceful position within the building. Tucked away towards the rear with no flat above or to the left allows this property to feel like a truly tranquil sanctuary of privacy. The current owners have altered the layout of the flat to provide an improved use of the decent square footage on offer. The results provide a wonderfully sociable and bright open-plan living room with a spacious area to dine, relax and entertain with large windows and a Juliette balcony providing views over the residential Victorian terraced street below. The sleek white kitchen boasts integrated appliances and plenty of storage options. Both bedrooms are of good size, the larger of the two located within the quietest part of the property and offers generous storage. The flat is served by a luxuriously smart and fully equipped bathroom.

Chain-free

Features

- Two double bedrooms
- Luxurious finish
- Iconic landmark building
- Perfectly situated for peace and privacy
- Two communal roof terraces
- Triple-glazed windows
- Concierge and security
- Northern line and Overground in moments
- Local amenities on the doorstep
- Chain-free

Council tax band E EPC rating C (76)



St. Luke's Avenue, Clapham, SW4



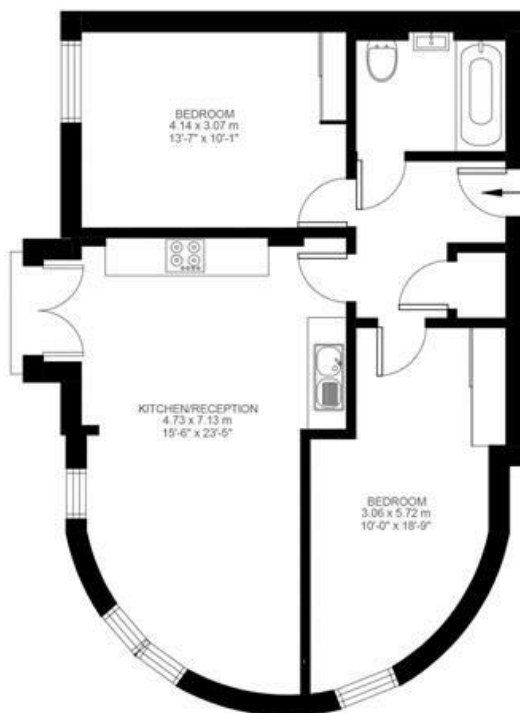
St Luke's Avenue

2 Bedroom Flat

Approx internal area:

706 sqft 66 sqm

While we do try our very best, floor plans are produced as a guide only and we take no responsibility for the precise accuracy with which any property is represented



Third Floor



St. Luke's Avenue, Clapham, SW4

