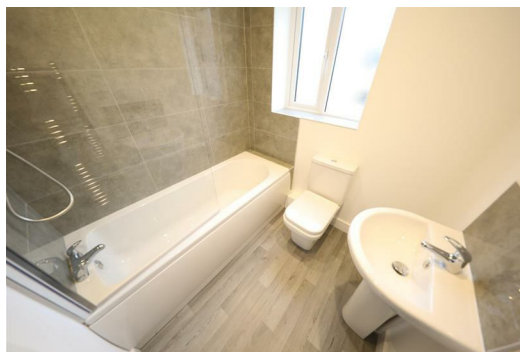




SYMONDS + GREENHAM

Estate and Letting Agents



8 Woodside, Saltshouse Road, Hull, East Yorkshire HU8 9FL £265,000

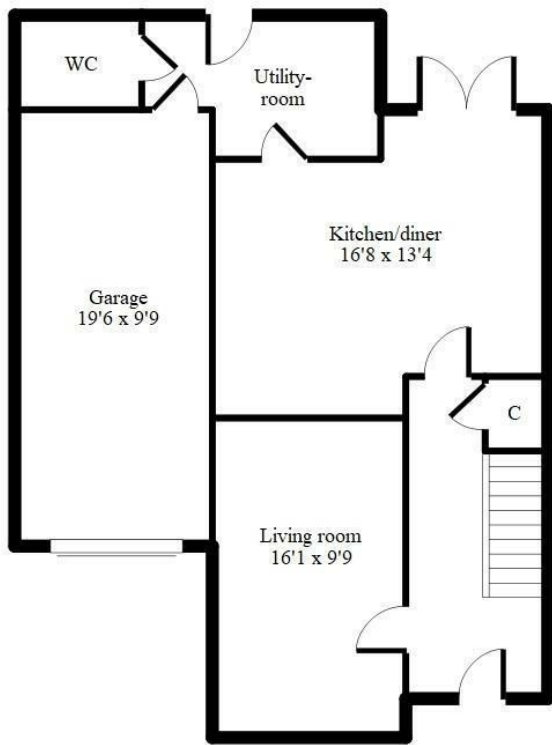
SUTTON PLACE NEW BUILD DEVELOPMENT - FOUR BED SEMI DETACHED HOME - THREE BATHROOMS - INTEGRATED GARAGE

Sutton Village has long been one of the most sought after places to live in Hull and the new development at Sutton Place will be a welcome addition to the picturesque village. This exclusive development will consist of three and four bed semi detached and detached new build homes ranging from £235,000 to £345,000.

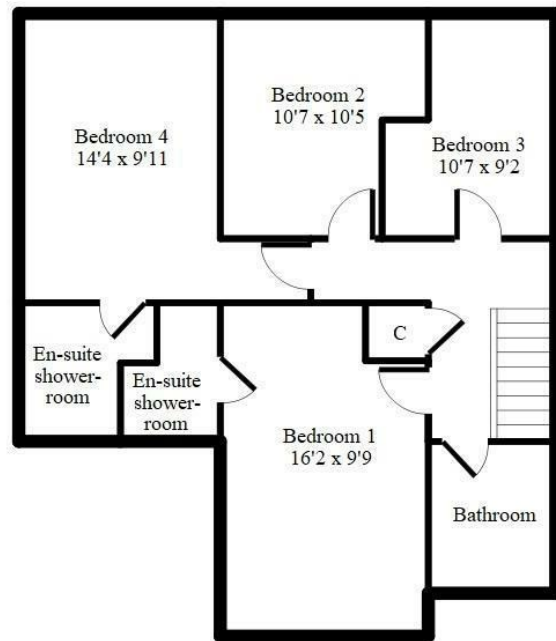
This plot is on one of a number of four bedroom semi detached homes with three bathrooms including two en suites, living room, open plan kitchen/diner, utility room, downstairs WC and integrated garage.

Interest is expected to be very high on these properties so anyone interested in reserving a plot should register their interest as soon as possible.

Call our New Homes Team and book your viewing on one of the show homes today



Ground floor



First floor

DISCLAIMER - Actual room sizes may differ slightly from those detailed on the above floorplans. Some plots will be a mirrored layout of the above floorplan.

Energy Efficiency Rating		Current	Potential
Very energy efficient - lower running costs			
(92 plus) A			
(81-91) B			
(69-80) C			
(55-68) D			
(39-54) E			
(21-38) F			
(1-20) G			
Not energy efficient - higher running costs			
England & Wales		EU Directive 2002/91/EC	

Environmental Impact (CO ₂) Rating		Current	Potential
Very environmentally friendly - lower CO ₂ emissions			
(82 plus) A			
(81-91) B			
(69-80) C			
(55-68) D			
(39-54) E			
(21-38) F			
(1-20) G			
Not environmentally friendly - higher CO ₂ emissions			
England & Wales		EU Directive 2002/91/EC	

