



**BUTLER & STAG**

Westferry Circus | London

| E14



---

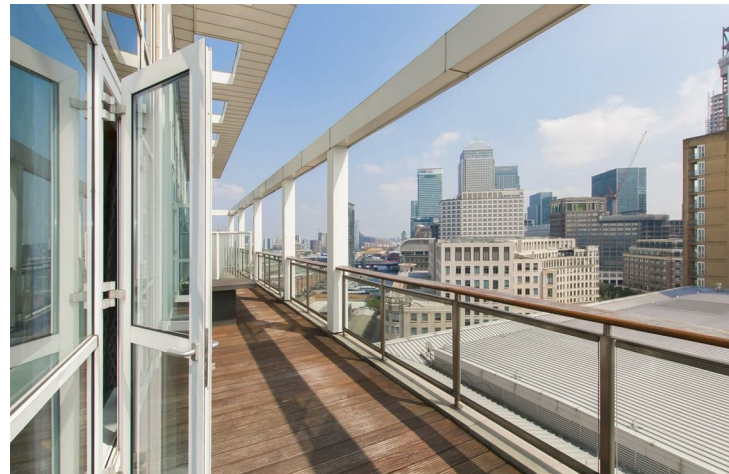
*\*Physical viewings taking place.\**

*Stunning penthouse apartment set within this landmark development in the heart of Canary Wharf, boasting stunning River and Wharf views.*

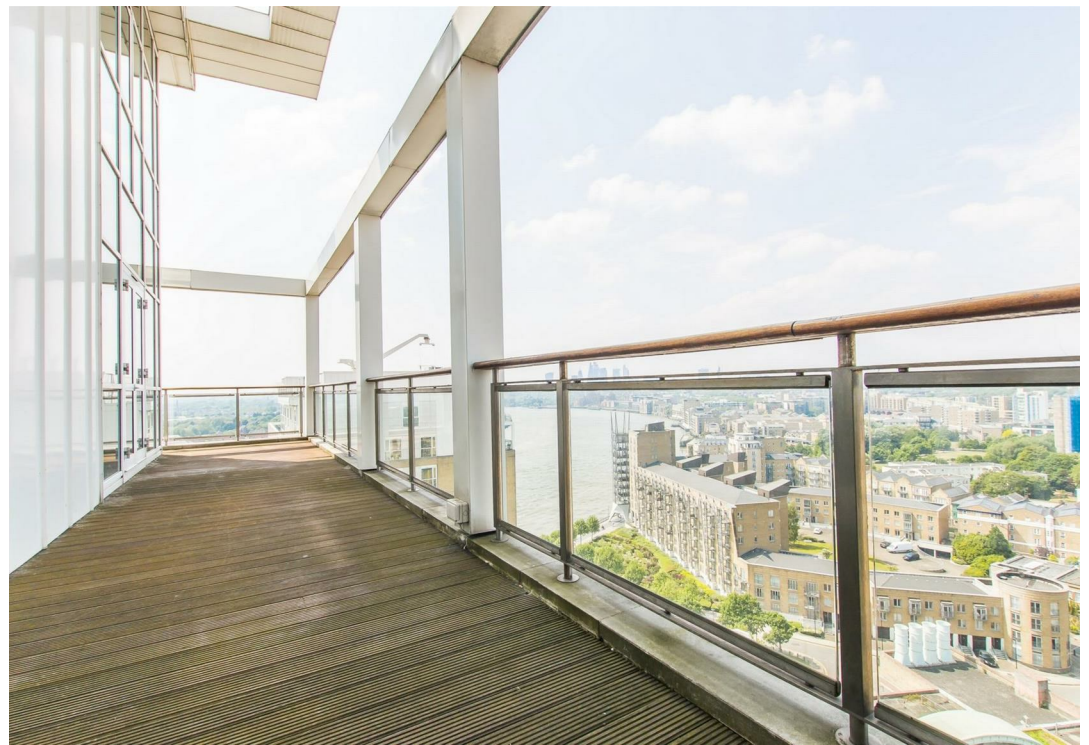
- Three bedrooms • Two bathrooms • Two Large Balconies • Penthouse Apartment • River & Canary Wharf Views • Bang & Olufsen Audio Vision Throughout • Underground Parking Space*

*£4,333 |*

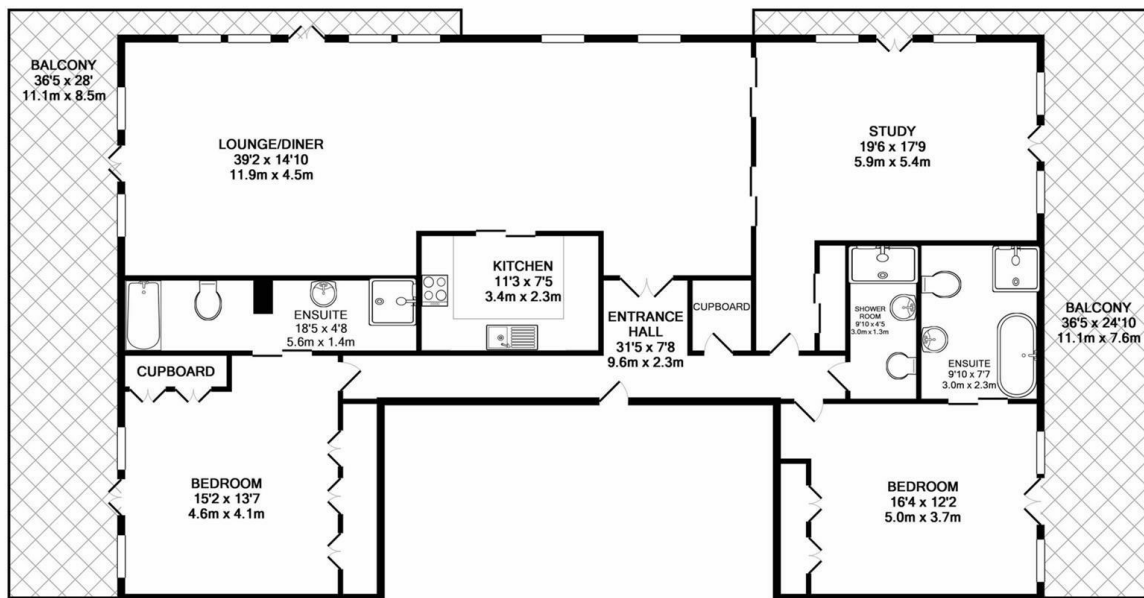
---











TOTAL APPROX. FLOOR AREA 1672 SQ.FT. (155.3 SQ.M.)  
 Whilst every attempt has been made to ensure the accuracy of the floor plan contained here, measurements of doors, windows, rooms and any other items are approximate and no responsibility is taken for any error, omission, or mis-statement. This plan is for illustrative purposes only and should be used as such by any prospective purchaser. The services, systems and appliances shown have not been tested and no guarantee as to their operability or efficiency can be given.  
 Made with Metropix ©2018



# BUTLER & STAG

508 Roman Road, Bow, London, E3 5LU | 020 8102 1236 |

bow@butlerandstag.com | www.butlerandstag.uk

Important Notice - These particulars have been prepared in good faith and they are not intended to constitute part of an offer or contract. We have not performed a structural survey on this property and the services, appliances and specific fittings have not been tested. All photographs, measurements, floor plans and distances referred to are given as a guide and should not be relied upon.

Energy Efficiency Rating		Current	Potential
Very energy efficient - lower running costs			
(92 plus) A			
(81-91) B			
(69-80) C			
(55-68) D			
(39-54) E		42	44
(21-38) F			
(1-20) G			
Not energy efficient - higher running costs			
England & Wales		EU Directive 2002/91/EC	

Environmental Impact (CO <sub>2</sub> ) Rating		Current	Potential
Very environmentally friendly - lower CO <sub>2</sub> emissions			
(92 plus) A			
(81-91) B			
(69-80) C			
(55-68) D		62	63
(39-54) E			
(21-38) F			
(1-20) G			
Not environmentally friendly - higher CO <sub>2</sub> emissions			
England & Wales		EU Directive 2002/91/EC	