



## LOFTUS ROAD W12

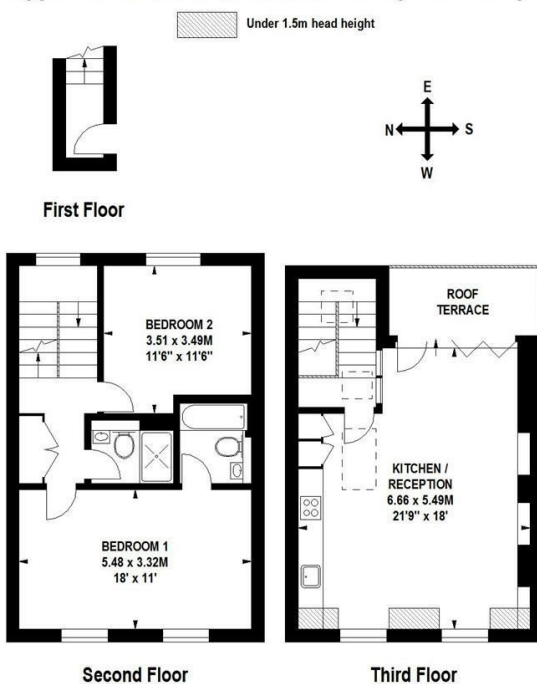




• 2 BEDROOMS • EXCELLENT CONDITION • OPEN PLAN RECEPTION • STYLISH FITTED KITCHEN • CONTEMPORARY CONTEMPORARY SHOWER ROOMSHOWER ROOM • WOOD FLOORING THROUGHOUT • PART FURNISHED • IDEAL FOR TRANSPORT LINKS AT SHEPHERDS BUSH ROAD • AVAILABLE NOW

Fantastic, 2 bedroom flat in excellent condition, with wood flooring throughout, open plan reception with stylish fitted kitchen and contemporary shower room. Located on a quiet residential street, a short walk from Westfield London and the transport links at Shepherds Bush. Part furnished.

**Loftus Road, W12**  
**Approximate Gross Internal Area 90 sq m / 969 sq ft**



Floor Plan produced for Finlay Brewer by Mays Floorplans ©. Tel 020 3397 4594  
 Illustration for identification purposes only, not to scale  
 All measurements are maximum, and include wardrobes and window bays where applicable  
 This Floorplan has been prepared in accordance with the current edition of the RICS code of measuring practice.

138 Shepherds Bush Road, London, W6 7PB  
 Tel: 020 7371 4071 [lettings@finlaybrewer.co.uk](mailto:lettings@finlaybrewer.co.uk)