



LOFTUS ROAD W12





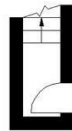
- 2 BEDROOMS • EXCELLENT CONDITION • OPEN PLAN RECEPTION • STYLISH FITTED KITCHEN • CONTEMPORARY CONTEMPORARY SHOWER ROOMSHOWER ROOM • WOOD FLOORING THROUGHOUT • PART FURNISHED • IDEAL FOR TRANSPORT LINKS AT SHEPHERDS BUSH ROAD • AVAILABLE 1ST MAY

Fantastic, 2 bedroom flat in excellent condition, with wood flooring throughout, open plan reception with stylish fitted kitchen and contemporary shower room. Located on a quiet residential street, a short walk from Westfield London and the transport links at Shepherds Bush. Part furnished.

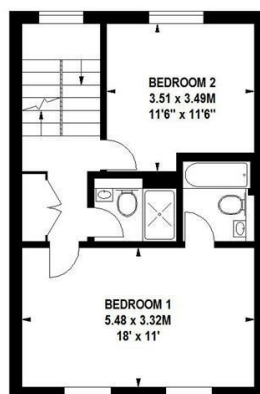
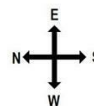
Loftus Road, W12

Approximate Gross Internal Area 90 sq m / 969 sq ft

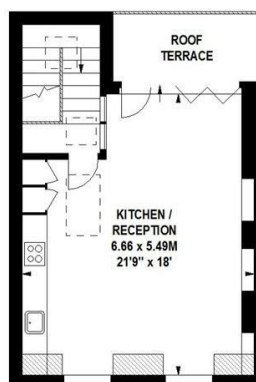
 Under 1.5m head height



First Floor



Second Floor



Third Floor

Floor Plan produced for Finlay Brewer by Mays Floorplans ©. Tel 020 3397 4594
 Illustration for identification purposes only, not to scale
 All measurements are maximum, and include wardrobes and window bays where applicable
 This Floorplan has been prepared in accordance with the current edition of the RICS code of measuring practice.

138 Shepherds Bush Road, London, W6 7PB
 Tel: 020 7371 4071 lettings@finlaybrewer.co.uk