



BUTLER & STAG

Dalston Square | London

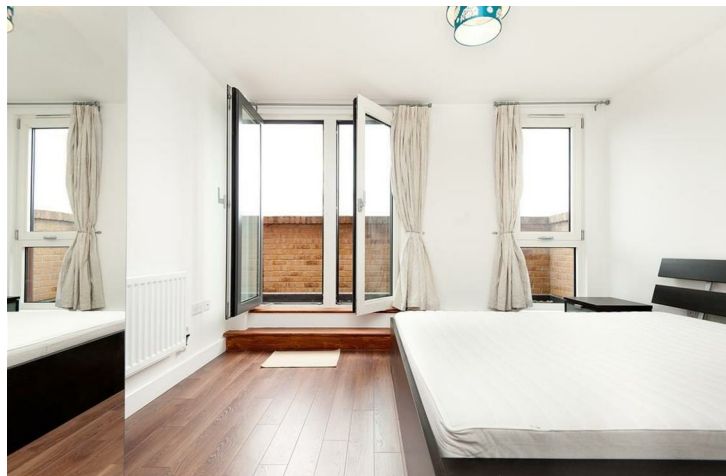
| E8

Physical viewings taking place

Offering commanding views over rapidly changing East London is this delightful, eighth floor, three bedroom apartment. Spaciously arranged on one floor the property benefits from floods of natural light, two bathrooms, wrap round terrace providing exclusive outside space and a secure gated parking space.

• Eighth Floor • Expansive Views • Secure Parking • Three Bedrooms • Private Terrace

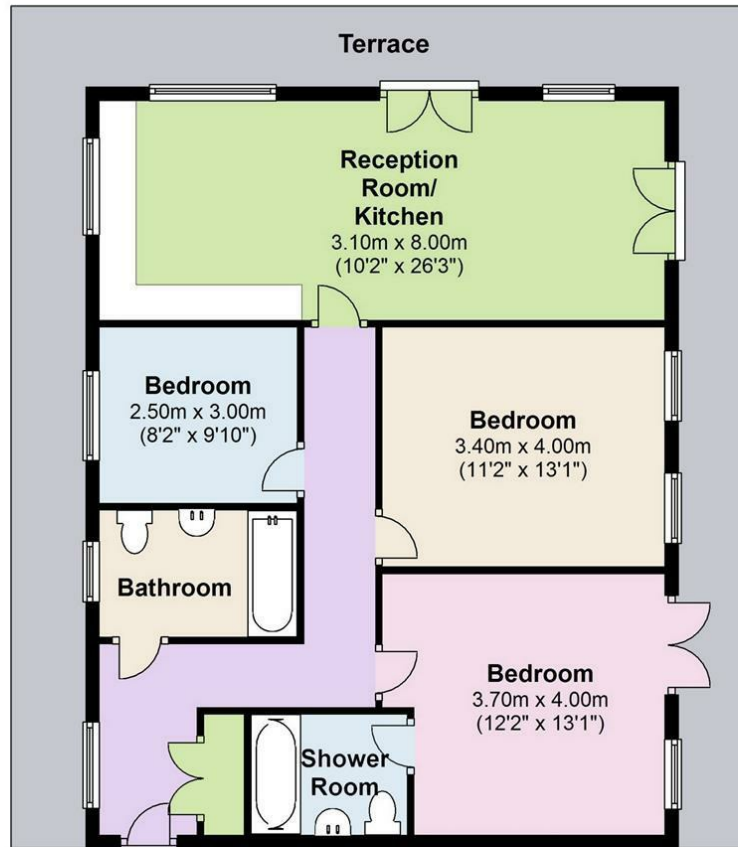
£2,400 PCM /





Eighth Floor

Approx. 80.7 sq. metres (869.1 sq. feet)



Total area: approx. 80.7 sq. metres (869.1 sq. feet)

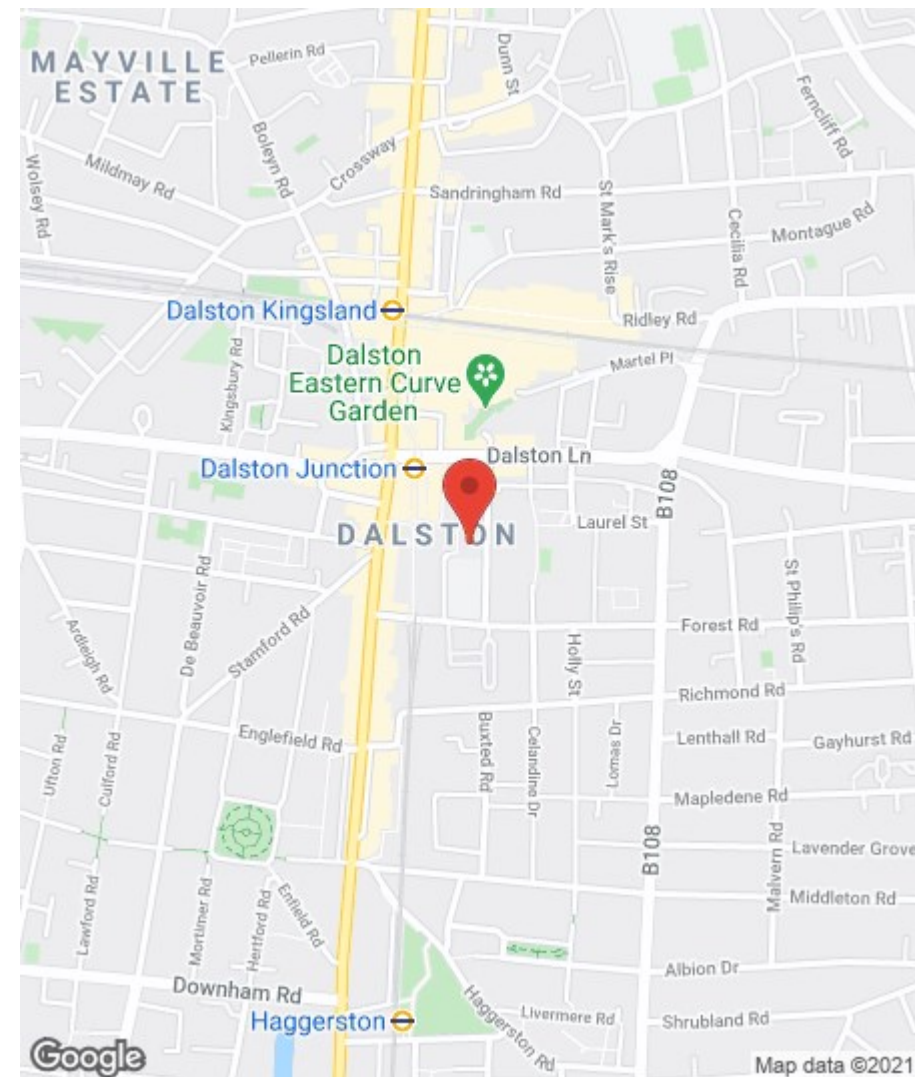
For illustration purposes only - not to scale

BUTLER & STAG

508 Roman Road, Bow, London, E3 5LU | 020 8102 1236 |

bow@butlerandstag.com | www.butlerandstag.uk

Important Notice - These particulars have been prepared in good faith and they are not intended to constitute part of an offer or contract. We have not performed a structural survey on this property and the services, appliances and specific fittings have not been tested. All photographs, measurements, floor plans and distances referred to are given as a guide and should not be relied upon.



Energy Efficiency Rating

	Current	Potential
Very energy efficient - lower running costs		
(92 plus) A		
(81-91) B	86	87
(69-80) C		
(55-68) D		
(39-54) E		
(21-38) F		
(1-20) G		
Not energy efficient - higher running costs		
England & Wales	EU Directive 2002/91/EC	

Environmental Impact (CO₂) Rating

	Current	Potential
Very environmentally friendly - lower CO ₂ emissions		
(92 plus) A	90	90
(81-91) B		
(69-80) C		
(55-68) D		
(39-54) E		
(21-38) F		
(1-20) G		
Not environmentally friendly - higher CO ₂ emissions		
England & Wales	EU Directive 2002/91/EC	