



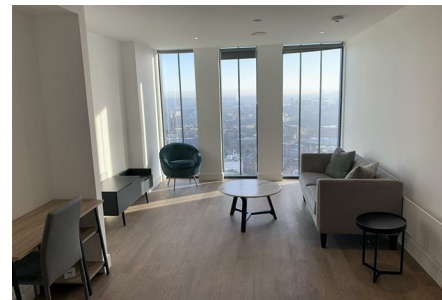
nest

**1704 Rutherford Street,
, NE1 5DP
£1,450 Per month**



Brand new spacious one bed apartment situated on the 17th floor of Hadrian's Tower offering a premium specification and distinctive interior design with breath-taking views of the City. The state-of-the-art residents' facilities include 24/7 Concierge, Room Service, Laundry Service, Travel Service, 26th Floor 3SIXTY Champagne Bar, Hadrian's and Co Coffee Shop. Please contact us for a viewing.

- 17th Floor
- 24/7 Concierge
- Room Service
- 26th floor Champagne Bar
- Utilities and Broadband Included
- Stunning Views of the City
- Laundry Service
- Pet Friendly
- Hadrians and Co Coffee Shop
- Travel Service



Lower Ground Floor, 27 Ridley Place, Newcastle upon Tyne, Tyne and Wear, NE1 8JN
Tel: 0191 6403450 | Email: info@propertybynest.co.uk
www.propertybynest.co.uk