

FOR SALE



Bletchingley Close, Thornton Heath

1 Bedroom, 1 Bathroom, Mid Terraced Bungalow

Asking Price Of £135,000



Bletchingley Close, Thornton Heath

1 Bedroom, 1 Bathroom

Asking Price Of £135,000

ENJOY YOUR RETIREMENT in this ultra convenient 1 bedroom bungalow! SPACIOUS reception room, fitted kitchen, double bedroom, bathroom/w.c. Situated in a quiet and ever popular cul-de-sac development for the over 60's with warden assistance, this one bedroom bungalow is within a 10 minute walk of most local amenities including Thornton Heath train station, bus routes, local shops and supermarket. NO CHAIN! Call us now!

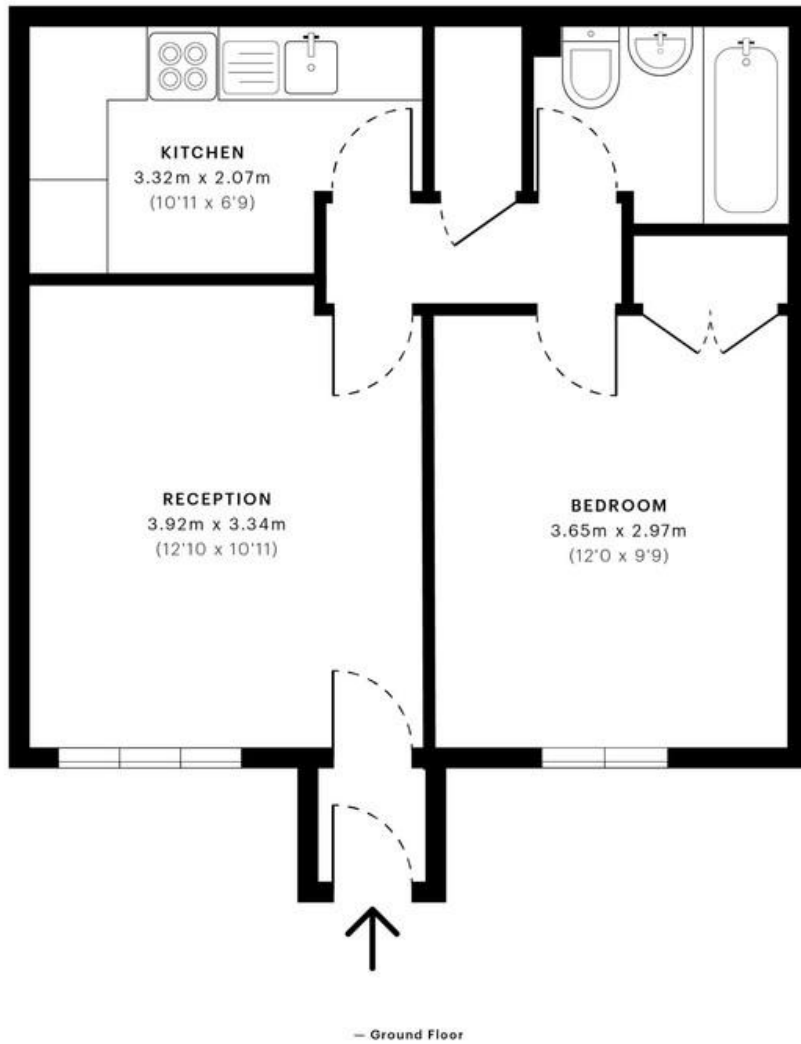
- 1 Bedroom Bungalow
- Over 60's only
- Good Condition
- Cul-De-Sac
- Minutes From Thornton Heath Town C.







Score	Energy rating	Current	Potential
92+	A		
81-91	B		85 B
69-80	C		
55-68	D	62 D	
39-54	E		
21-38	F		
1-20	G		



Martin & Co Croydon

145 Brighton Road • South Croydon • CR2 6EF
T: 0208 688 8565 • E: croydon@martinco.com

0208 688 8565
<http://www.martinco.com>



Accuracy: References to the Tenure of a Property are based on information supplied by the Seller. The Agent has not had sight of the title documents. A Buyer is advised to obtain verification from their Solicitor. Items shown in photographs including but not limited to carpets, fixtures and fittings are not included unless specifically mentioned within the sales particulars. They may however be available by separate negotiation. Buyers must check the availability of any property and make an appointment to view before embarking on any journey to see a property. No person in the employment of the agent has any authority to make any representation about the property, and accordingly any information given is entirely without responsibility on the part of the agents, sellers(s) or lessors(s). Any property particulars are not an offer or contract, nor for part of one. **Sonic / laser Tape:** Measurements taken using a sonic / laser tape measure may be subject to a small margin of error. **All Measurements:** All Measurements are Approximate. **Services Not tested:** The Agent has not tested any apparatus, equipment, fixtures and fittings or services and so cannot verify that they are in working order or fit for the purpose. A Buyer is advised to obtain verification from their Solicitor or Surveyor.