



Stockwell Park Walk, SW9

2 bedroom flat to let

£415 Per Week

Furnished

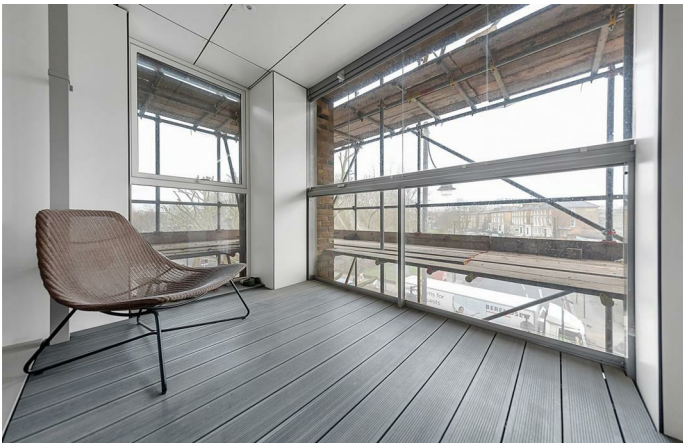
Property Details

A sleek two bedroom flat with a balcony situated just around a five minute walk away from Brixton underground station. This stunning flat comprises a modern open plan kitchen and reception which leads on to the balcony with picturesque views of Brixton and beyond, two generously sized double bedrooms and two contemporary bathrooms - one of which is an en-suite. This property also benefits from an indoor bike storage. Living here you'll be around a thirteen minute walk from Stockwell station and also around a eighteen minute walk away from the beloved open green spaces of Brockwell park.

Features

- 2 generously sized double bedrooms
- 2 bathrooms, including en-suite
- Open plan kitchen and reception
- Covered balcony / sunspace
- Communal gardens
- Indoor bike storage
- Around an 18 minute walk to Brockwell park

Council tax band D EPC rating B (86)





Stockwell Park Walk

2 Bedroom Flat

Approx internal area:

806 sqft 75 sqm

While we do try our very best, floor plans are produced as a guide only and we take no responsibility for the precise accuracy with which any property is represented



Second Floor



Stockwell Park Walk, SW9

