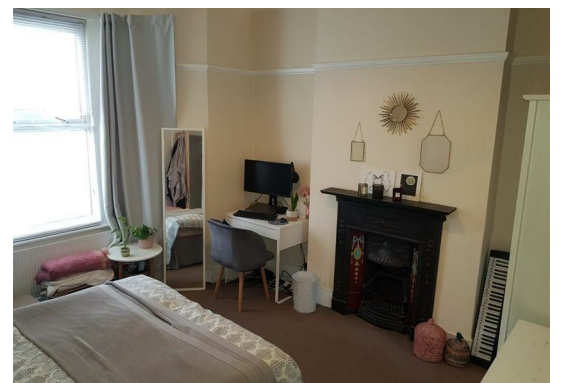




Rosebery Road, London, SW2 4DG
£3,200 Per Month

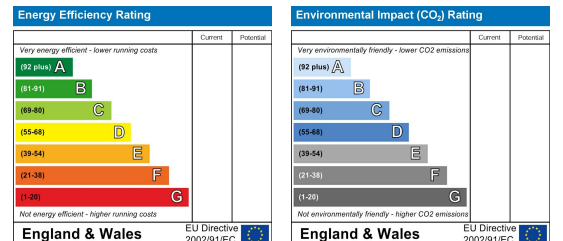
 4  1  1 





Spacious four bedroom house to rent in Clapham comprising four double bedrooms, large open plan living room/kitchen with modern fitted units and appliances, family bathrooms and private rear garden. Gas central heating, double glazed windows.

One month's rent: £3200 | Deposit: £3200 |



These particulars, whilst believed to be accurate are set out as a general outline only for guidance and do not constitute any part of an offer or contract. Intending purchasers should not rely on them as statements of representation of fact, but must satisfy themselves by inspection or otherwise as to their accuracy. No person in this firm's employment has the authority to make or give any representation or warranty in respect of the property.