

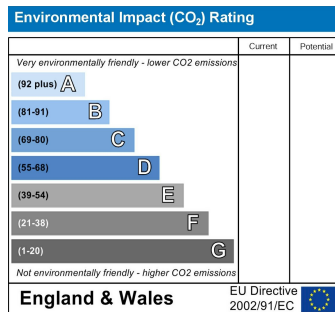
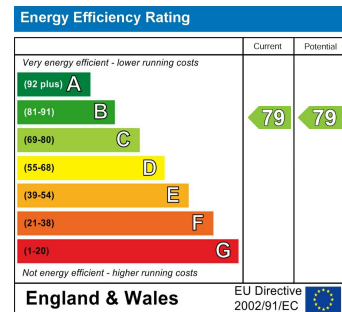
www.kings-group.net

473 High Street
Tottenham N17 6QA
Tel: 020 8801 2696

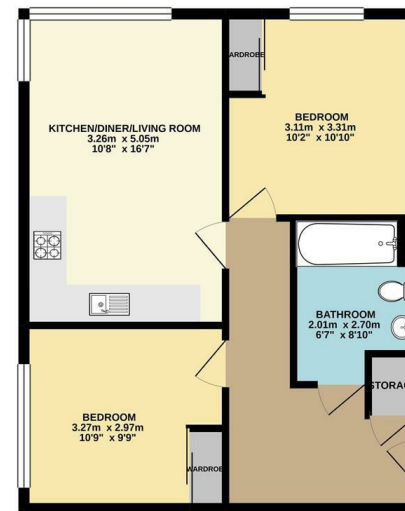
Ambleside Close, London, N17 6FF
£325,000

Kings Group are delighted to present this two bedroom purpose built flat in prime location only a short walking distance away from both Seven Sisters Station and Tottenham Hale Station. The property is in immaculate condition throughout and benefits spacious open plan modern fitted kitchen and lounge with dining area with plenty of light coming through the large windows, two double bedrooms with fitted wardrobes and a large three piece family bathroom suite. This would be an ideal opportunity for a first time buyer or investor.

The property is located in the midst of the regeneration taking place in Tottenham. It offers quick access to trendy cafes and restaurants, including the recently refurbished gastro pubs, The High Cross and The Beehive, and is a short walk to Tottenham Green Market, Holcombe Market and the Bernie Grant Arts Centre. Situated in the heart of Tottenham, the property is minutes away from Seven Sisters (Victoria Line) and Tottenham Hale Station (Victoria Line) with trains going directly to Liverpool Street Station and excellent bus routes connecting the surrounding areas. From Tottenham Hale Station you can also access the Stansted Express and direct trains in to Stratford.



Lauriston Apartments
50.9 sq.m. (548 sq.ft.) approx.



Lauriston Apartments, Ambleside Close, N17

TOTAL FLOOR AREA : 50.9 sq.m. (548 sq.ft.) approx.
While every effort has been made to ensure the accuracy of the floor plan, the measurements of doors, windows, stairs and any other items are approximate and not responsible in law for any error, omission or misstatement. The plan is for information purposes only and should be used as a guide only. Prospective purchasers should verify the accuracy of the information on the ground. The services, systems and appliances shown have not been tested and no guarantee is given for their operation or efficiency on the ground.
 Made with AutoCAD 2012

