

TO LET



Hursley Road, Chandlers Ford

2 Bedrooms, 1 Bathroom, Ground Floor Flat

£1,200 pcm



Hursley Road, Chandlers Ford

2 Bedrooms, 1 Bathroom

£1,200 pcm

Date available: Available Now

Deposit: £1,384.61

Unfurnished

Council Tax band: C

- Available 13th July 2024
- Ground floor
- Eastleigh Council Tax band C
- White Goods included
- Must be seen
- Built in wardrobes in both double bedrooms
- Good size Lounge diner

ENTRANCE HALL Entrance hall with radiator, doors leading to all rooms, airing cupboard and intercom access.

SITTING/DINING ROOM 22' 10" x 12' 9" (6.96m x 3.89m) Space for dining, window to side elevation, sliding doors leading out on to patio and communal garden.

Wall mounted electric feature flame fire.

KITCHEN 8' 2" x 8' 2" (2.49m x 2.49m) Kitchen overlooking communal garden to rear, Modern wall and floor units available.

Washing machine, fridge freezer, oven and hob included. ALL new

BEDROOM ONE 11' 7" x 11' 2" (3.53m x 3.4m) Double bedroom with built in wardrobe, dimplex wall mounted heater, double glazed window to side elevation and beige carpet.

BEDROOM TWO 11' 7" x 8' 10" (3.53m x 2.69m) Double bedroom with built in wardrobe, dimplex wall mounted heater, double glazed window to rear





elevation.

BATHROOM 11' 1" x 6' 10" (3.38m x 2.08m) White suite with separate electric triton shower , bath, wash hand basin with storage unit above. Extractor and wall mounted heater.

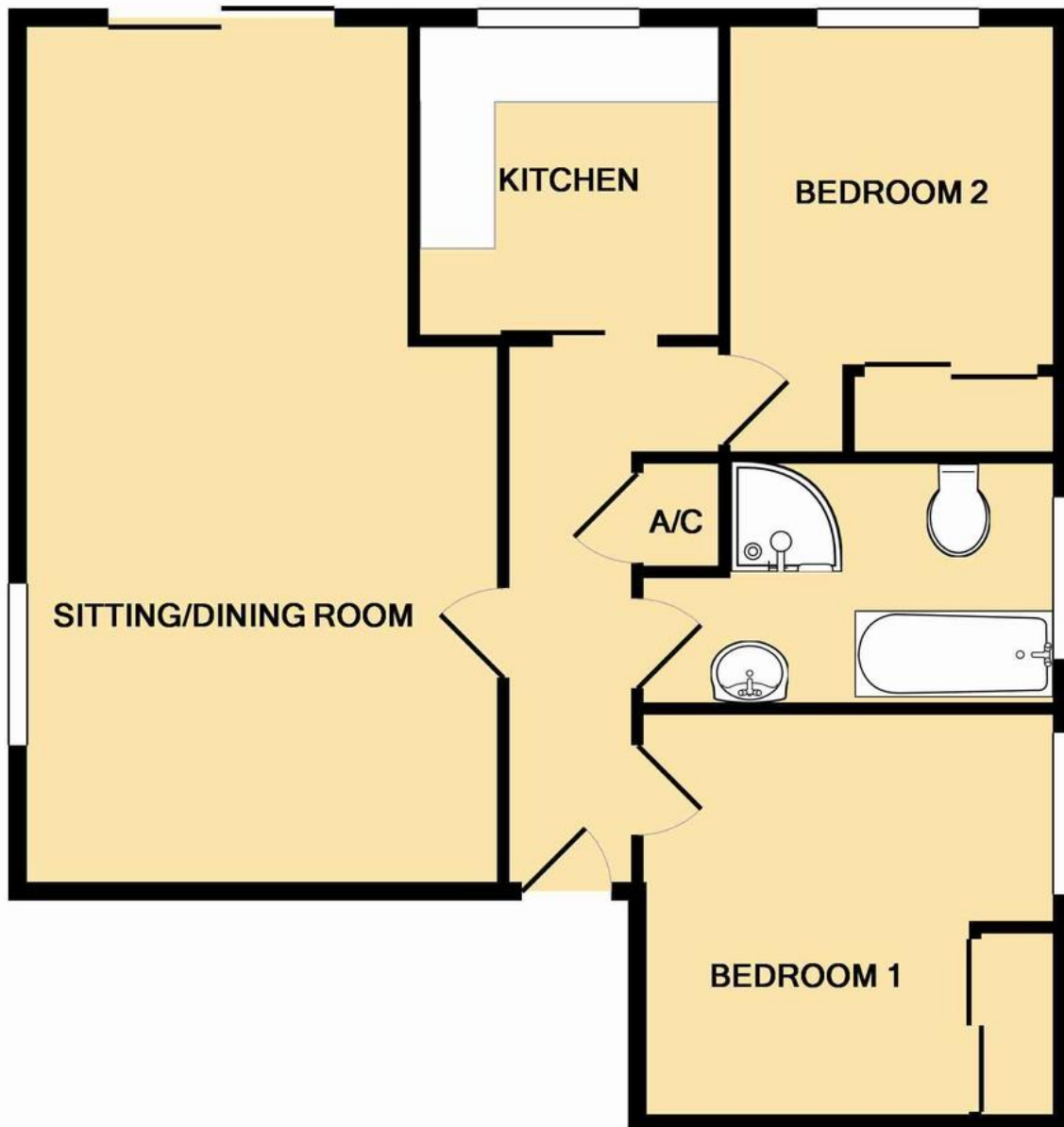
GARDEN Enclosed communal gardens to the rear of the property, laid to lawn with shrubs and trees.





Energy Efficiency Rating

	Current	Potential
Very energy efficient - lower running costs		
(92+) A		
(81-91) B		
(69-80) C	69	76
(55-68) D		



TOTAL APPROX. FLOOR AREA 705 SQ.FT. (65.5 SQ.M.)

Whilst every attempt has been made to ensure the accuracy of the floor plan contained here, measurements of doors, windows, rooms and any other items are approximate and no responsibility is taken for any error, omission, or mis-statement. This plan is for illustrative purposes only and should be used as such by any prospective purchaser. The services, systems and appliances shown have not been tested and no guarantee as to their operability or efficiency can be given

Made with Metronix ©2014

Martin & Co Chandler

46 London Road • Southampton • SO15 2AH

T: 02380 390012 • E: chandlerford@martinco.com <http://www.martinco.com>

02380 390012



Accuracy: References to the Tenure of a Property are based on information supplied by the Seller. The Agent has not had sight of the title documents. A Buyer is advised to obtain verification from their Solicitor. Items shown in photographs including but not limited to carpets, fixtures and fittings are not included unless specifically mentioned within the sales particulars. They may however be available by separate negotiation. Buyers must check the availability of any property and make an appointment to view before embarking on any journey to see a property. No person in the employment of the agent has any authority to make any representation about the property, and accordingly any information given is entirely without responsibility on the part of the agents, sellers(s) or lessors(s). Any property particulars are not an offer or contract, nor for part of one. **Sonic / laser Tape:** Measurements taken using a sonic / laser tape measure may be subject to a small margin of error. **All Measurements:** All Measurements are Approximate. **Services Not tested:** The Agent has not tested any apparatus, equipment, fixtures and fittings or services and so cannot verify that they are in working order or fit for the purpose. A Buyer is advised to obtain verification from their Solicitor or Surveyor.