



Treves Close, London

£695,000



the advantage of experience



- 3 bed, 2 bath
- Lounge with doors to garden
- South West landscaped garden
- Close to excellent schools
- Great transport links
- Two allocated parking spaces (one under cover)
- Newly fitted bathroom and kitchen



For more images of this property please visit havilands.co.uk



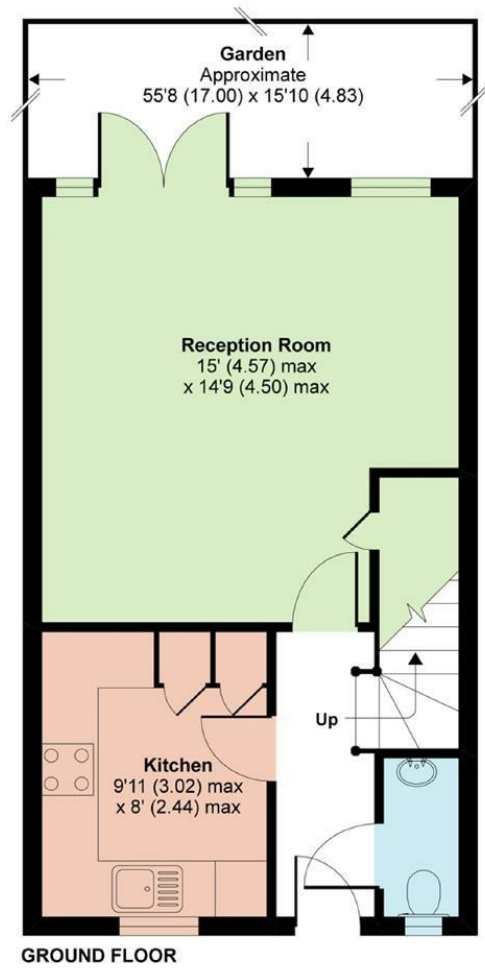
We are delighted to offer this 3 bed, 2 bath family home, ideally located for some of the best schools in N21 (primary and secondary), excellent transport links and amenities. This mid terraced property, arranged over three floors, has been well maintained throughout with the kitchen fitted just over a year ago. It features porcelain floor tiles and quartz worktops with grey high gloss cupboard doors. There are 2 double bedrooms, 1 with en-suite, on the first floor with a large double on the top floor. The lounge has doors leading to a south west facing garden featuring a Japanese pond, waterfall, stream and a professional grade irrigation system. The property also benefits from Two allocated parking spaces, one is under cover. early viewing advised!

For more images of this property please visit havalands.co.uk

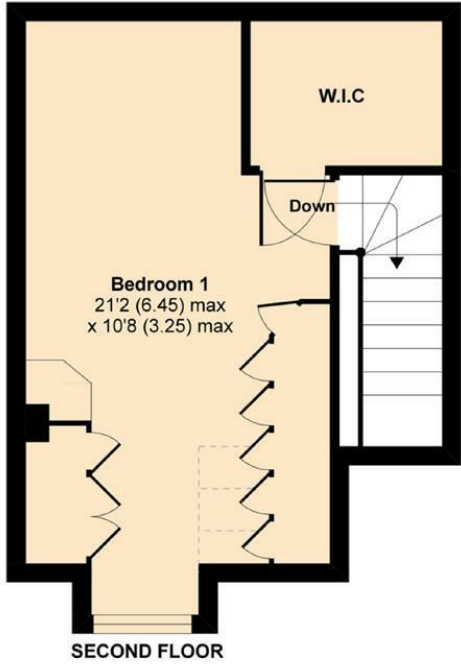
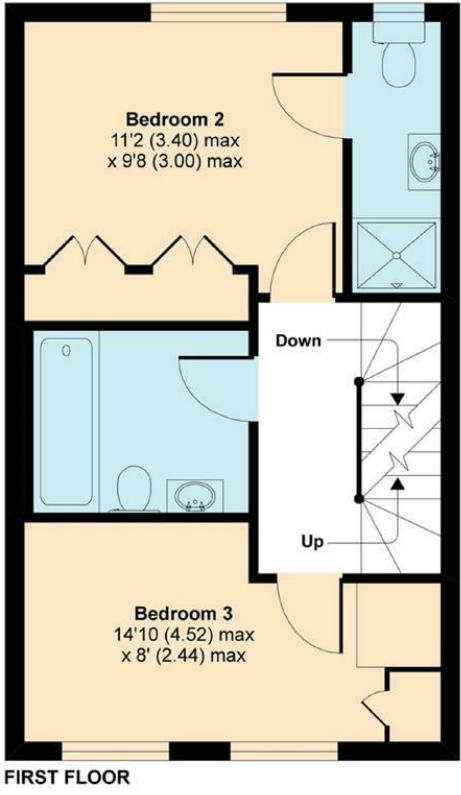
Treves Close, London, N21

Approximate Area = 1020 sq ft / 94.7 sq m
 Limited Use Area(s) = 19 sq ft / 1.7 sq m
 Total = 1039 sq ft / 96.5 sq m

For identification only - Not to scale



Denotes restricted head height



Floor plan produced in accordance with RICS Property Measurement Standards incorporating International Property Measurement Standards (IPMS2 Residential). © nichecom 2020. Produced for Statons. REF: 672668

havilands | 020 8886 6262
 come by and meet the team
 30 The Green, Winchmore Hill, London, N21 1AY



the advantage of experience