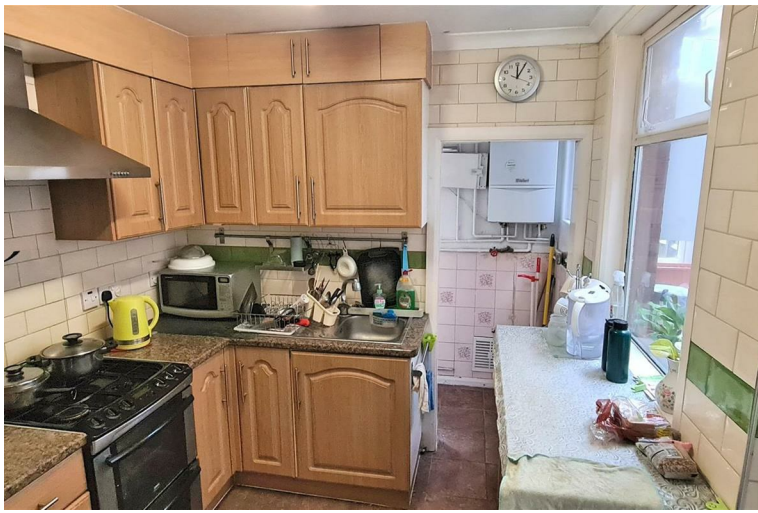




**Capital Homes**
Estate Agents & Valuers

35 Bury Road, London N22 6HS
£499,995



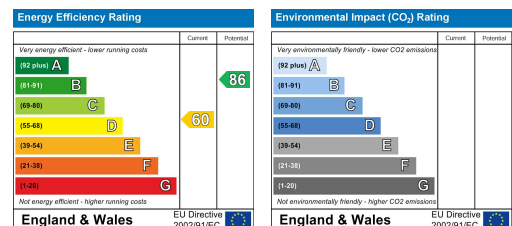


Capital Homes are pleased to present this bright two bedroom semi-detached house, situated in a side turning just behind Wood Green High Road with easy access to local shops, supermarkets and cafés.

Bury Road is ideally located within a short walk to Wood Green Underground Station, local bus services, Alexandra Palace Station, The Mall and countless amenities along the High Road.

Internally the house is well decorated, double glaze windows, gas central heating, separate reception room, good sized bedroom, fully fitted kitchen with an adjoining conservatory, large bathroom, small study room, small second toilet on ground floor, private patio garden with a large shed.

Kitchen: 2.4m x 2.6m; Conservatory: 3.8m x 1.7m; Reception: 3.5m x 2.9m; Study: 2.1m x 3.7m; Bathroom: 3.6m x 2.4m; Bedroom1: 3.6m x 2.1m; Bedroom2: 4.2m x 2.9m



1 Turnpike Lane
London
N8 0EP

0208 342 5555
info@capitalhomesestates.co.uk
www.capitalhomesestates.co.uk

Agents Note: Whilst every care has been taken to prepare these particulars, they are for guidance purposes only. All measurements are approximate are for general guidance purposes only and whilst every care has been taken to ensure their accuracy, they should not be relied upon and potential buyers/tenants are advised to recheck the measurements