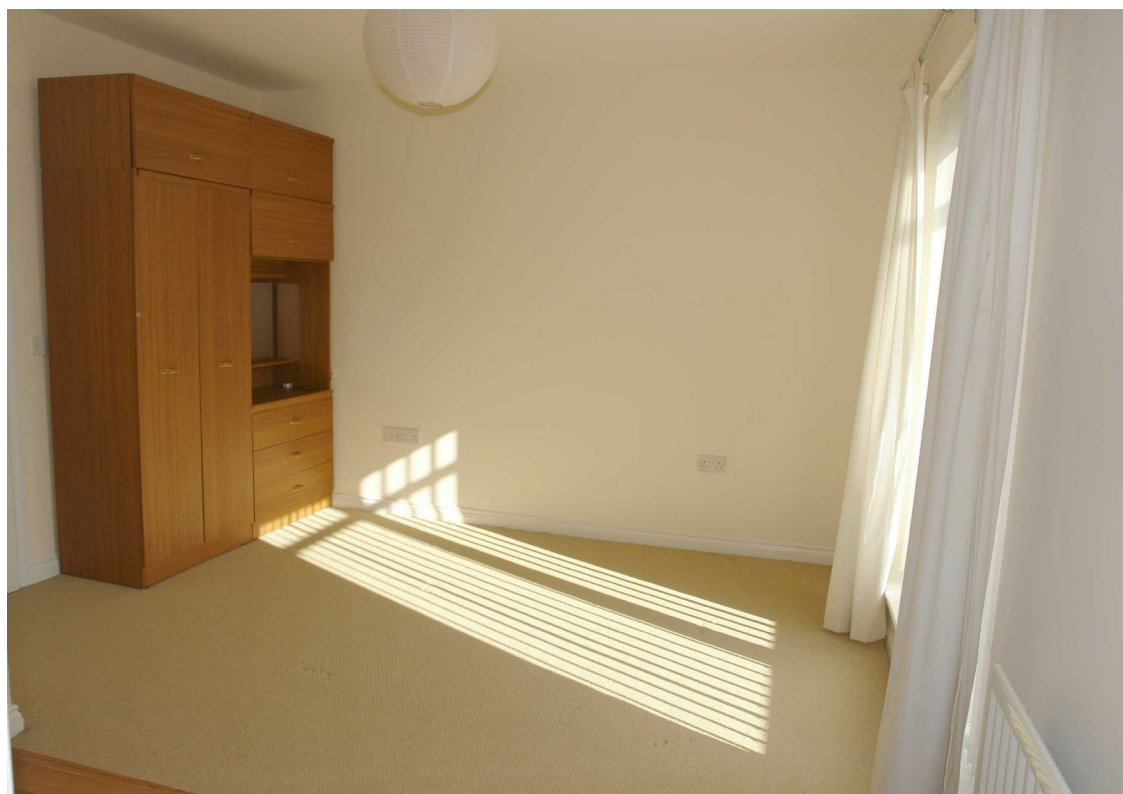
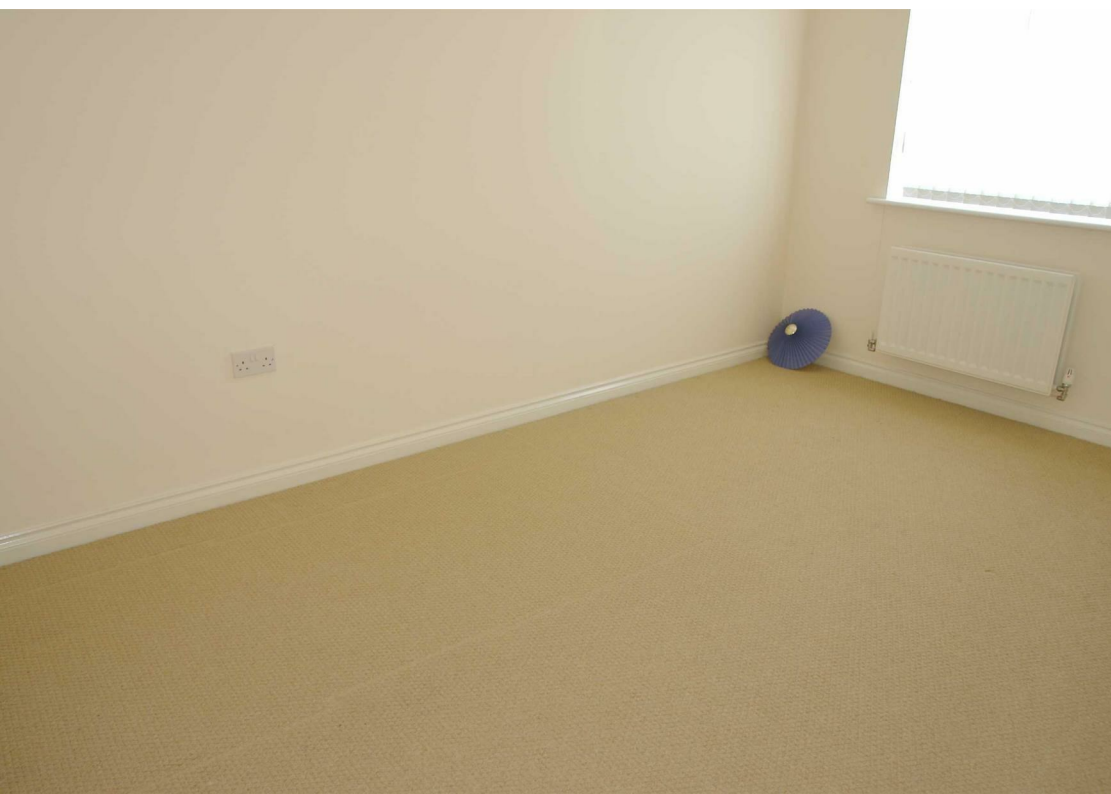






- Three Bedrooms
- Gas Central Heating
- Excellent Location
- Solar Panels
- Available March
- Semi-Detached House
- Close To The Metro Centre
- Modern Living
- Double Glazing
- Balcony





Available mid March and offered on an unfurnished basis, this three bedroom semi-detached property is sure to impress.

Briefly comprising; entrance hall, downstairs WC, lounge with French doors to the rear garden, kitchen and utility room. To the first floor there are three bedrooms main bedroom with en-suite and balcony, and there is also a three piece family bathroom. The property benefits from gas central heating and double glazing. Externally there are gardens to the front and rear with driveway leading to an integral garage. The property also has solar panels.

For more information please call our Low Fell branch on 0191 487 0800.

#### Covid-19 Viewing Guidelines

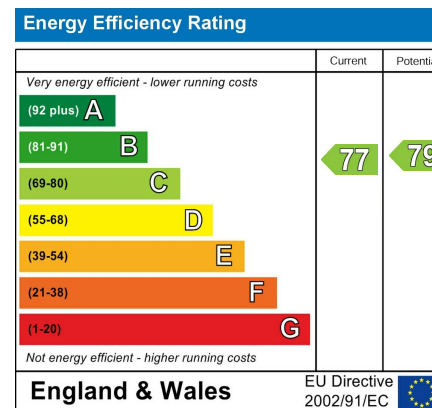
For the safety of our clients, yourselves and our staff we are currently only allowing viewings to go ahead if viewers wear appropriate PPE (masks and gloves). Social distancing rules must also be adhered to at all times. Where possible we will encourage vendors to leave the property while the viewing is going ahead. We also will only allow 2 people to view a property at any one time. We may share contact numbers where requested by NHS to prevent the spread of Covid-19.

## The difference between house and home

You may download, store and use the material for your own personal use and research. You may not republish, retransmit, redistribute or otherwise make the material available to any party or make the same available on any website, online service or bulletin board of your own or of any other party or make the same available in hard copy or in any other media without the website owner's express prior written consent. The website owner's copyright must remain on all reproductions of material taken from this website.



[www.janforsterestates.com](http://www.janforsterestates.com)



Gosforth 0191 236 2070  
 Newcastle 0191 284 4050  
 Forest Hall 0191 605 3134  
 High Heaton 0191 270 1122  
 Low Fell 0191 487 0800  
 Tynemouth 0191 257 2000  
 Whitley Bay 0191 251 3000  
 Property Management Centre 0191 236 2680

