



Riverside Court, London
Nine Elms SW8

GARTONJONES.COM



Riverside Court, London Nine Elms, SW8

GARTON JONES.COM

9 Albert
Embankment
London
SE1 7SP

Sales +44 (0) 20 7735 1888
nineelms@gartonjones.com
www.gartonjones.com

£1,200,000 Leasehold

A light and spacious 1,170sq.ft, 3 bedroom river facing apartment on the 2nd floor (with lift) of this established development in the heart of Nine Elms and opposite the site of the flagship US Embassy. This newly refurbished apartment is currently arranged with 3 spacious double bedrooms, 2 bathrooms (1 en-suite), an impressive triple aspect reception room with direct views of the River Thames from Battersea Power Station in the West to the City in the East and beyond. There is a separate kitchen, excellent storage throughout, secure parking and a day porter. Riverside Court is located close to a range of local shops and amenities as well as being within a few minutes' walk of the transport links of Vauxhall including Rail, Tube (Victoria Line) and Bus Services as well as the River Taxi at St George Wharf.

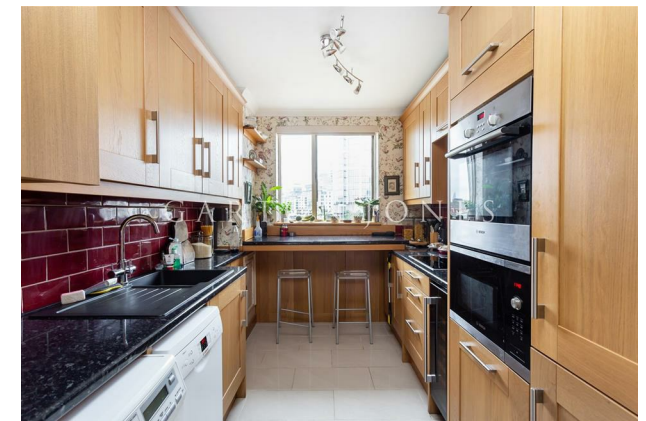
Service Charge: £7,612

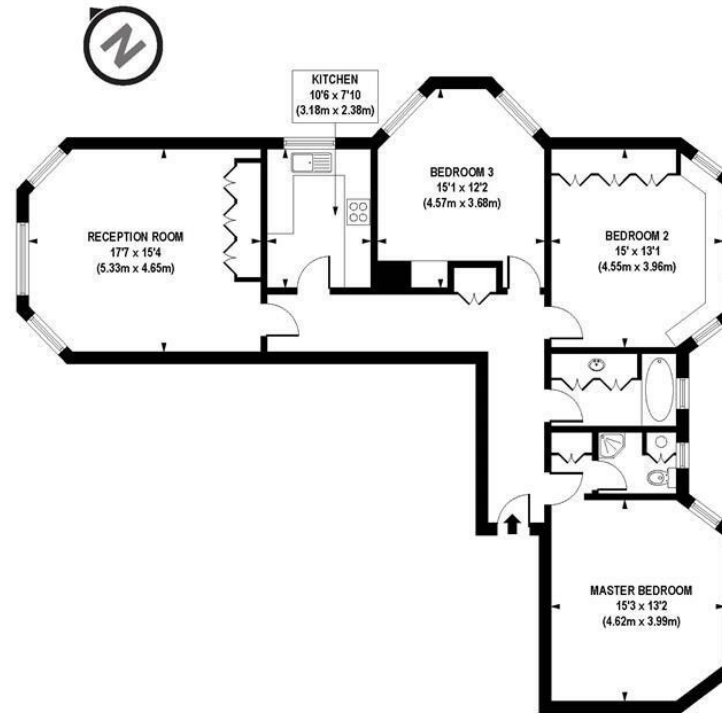
Ground Rent: £0

Leasehold: 85 Years Remaining

EPC certificate available on request.

- 1,170 sq.ft (108sq.m)
- 2nd Floor (With Lift)
- 3 Double Bedrooms
- Triple Aspect Reception Room
- Separate Kitchen (River Views)
- Direct Sunset Views across the River Thames
- Excellent Storage Throughout
- Secure Parking & Day Porter
- Close to Local Amenities Including Shops, Restaurants & Transport Links
- Walking Distance to Vauxhall Bus/Rail/Tube and River Taxi Services





APPROX. GROSS INTERNAL FLOOR AREA 1170 sq. ft / 108.70 sq. m

Floorplan is for illustrative purposes only and is not to scale.
Every attempt has been made to ensure the accuracy of the floorplan shown, however all measurements, fixtures, fittings and data shown are an approximate interpretation for illustrative purposes only.
Liability for errors, omissions or mis-statement through negligence or otherwise is hereby excluded.

CP CREATIVE
PROPERTY MARKETING

