

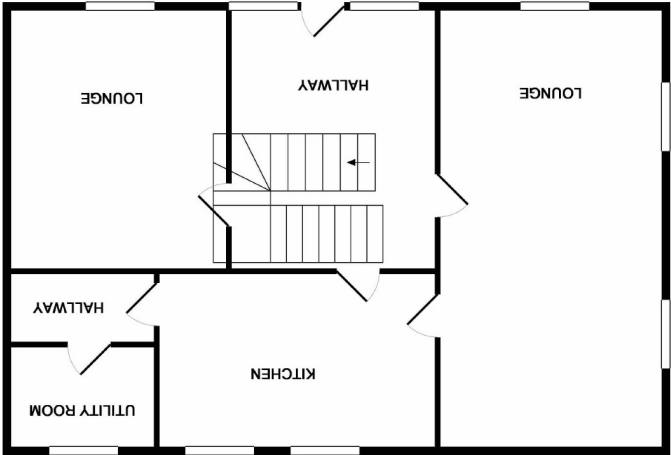
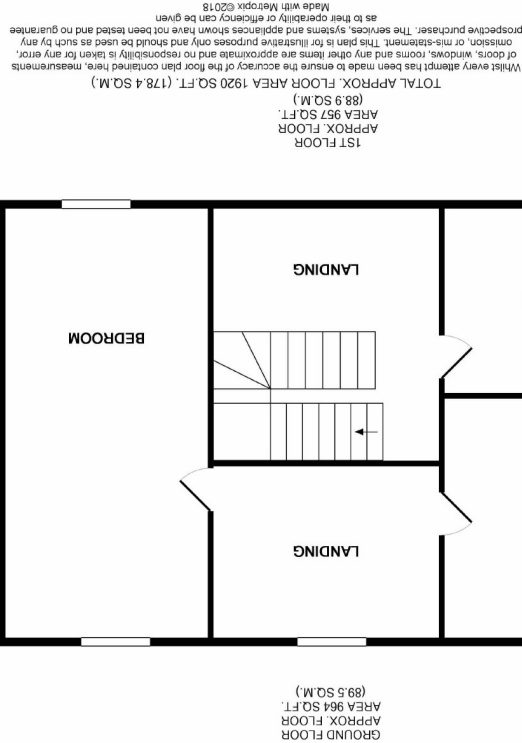


Offices also at: Wilmslow, Macclesfield, Hale, Sale, Chorlton, Glossop, Manchester & Salford

01625 532000  
w@jordanfishwick.co.uk  
www.jordanfishwick.co.uk

36-38 Alderley Road, Wilmslow, Cheshire, SK9 1JX

These particulars are believed to be accurate but they are not guaranteed and do not form a contract. Neither Jordan Fishwick nor the vendor or lessor accept any responsibility in respect of these particulars, which are not intended to be statements or representations of fact and any intending purchaser or lessee must satisfy himself by inspection or otherwise as to the correctness of each of the statements contained in these particulars. Any floorplans on this brochure are for illustrative purposes only and are not necessarily to scale.



jordanfishwick

MOBBERLEY  
The Barn, Burleyhurst Lane, MOBBERLEY, WA16 7LP





Burleyhurst Lane,  
MOBBERLEY WA16 7LP  
£1,495 Per calendar month



The Property

MOBBERLEY - PART FURNISHED AVAILABLE MID FEBRUARY Extremely attractive barn conversion in a semi rural location only minutes from Mobberley village and only a short drive from Knutsford, Wilmslow, Alderley Edge and Manchester Airport and with easy access to the major motorway networks. Offering a flexible layout where you can have either 3 bedrooms & 2 reception rooms or 2 bedrooms and 3 reception rooms. Contemporary fitted kitchen, utility room and cloak room. Bathroom. Garden and parking for 2 cars. Sorry no pets Garden maintenance included. Stabling available at an additional cost VIEWING HIGHLY RECOMMENDED £1495.00pcm Contact Wilmslow 01625 536300

Directions

- AVAILABLE NOW
- PART FURNISHED
- Barn Conversion
- Semi Rural Location
- Off Road Parking
- Oil Heating
- Enclosed Garden
- Spacious Interior

Postcode - WA16 7LP  
EPC Rating - E  
Floor Area - sq ft  
Local Authority -  
Council Tax - Band

