



Oliver James
FOR SALE
01245 858907

←
One way

Oliver James



St Helens Mews,

Abingdon, OX14 5SA

£225,000

Description

A Duplex Apartment in central Abingdon, offering two bedrooms in this quiet mews style development.

The property is close to St Helens Church, river Thames and a very short walk from the town centre shops, parks and bus routes for Oxford.

The entrance hall leads to a separate kitchen which is a good size with plenty of storage and the reception room with a separate dining area and open fireplace. On the first floor there are two bedrooms, with fitted wardrobes and a bathroom.

The property features replacement double glazing and electric heating plus a west facing balcony that has views reaching across to the historic former Morland's brewery site with its period buildings.

Situated at the end of the mews, you are able to use the rear balcony as a place to enjoy breakfast during a summers morning. The kitchen benefits from a built-in electric oven, ceramic hob and microwave.

The property comes with a share of the Freehold and forms sensible lower than average service charges.





Directions

From the centre of Abingdon walk down West St Helen Street towards the church and the river and the property will be found on the left hand side just opposite St Edmunds Lane.

Location

The property is situated just off the town centre in West St Helen Street, a short walk to the town centre shops, river Thames and Abbey Meadows play park..

The market and riverside town of Abingdon is situated c.6 miles from the city of Oxford and within the town there are excellent shopping and leisure facilities.

Numerous well regarded state and private schools are close by, plus Frilford Heath and Drayton golf courses. Within easy reach is Didcot Station (c.8 miles) where London (Paddington) is reachable in 45 minutes. Excellent and frequent bus routes to Oxford throughout the day and evening.





St. Helens Mews, Abingdon, OX14

Approximate Area = 708 sq ft / 66 sq m

For identification only - Not to scale

Oliver James

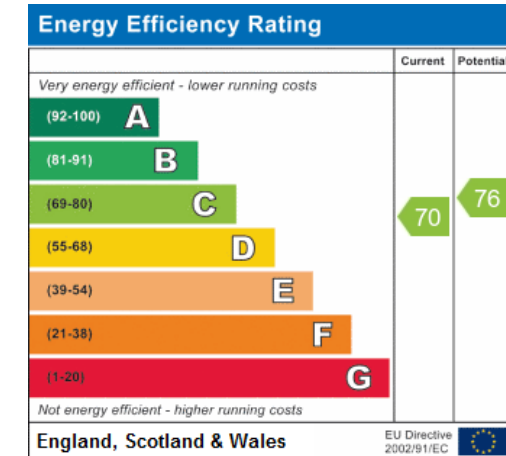
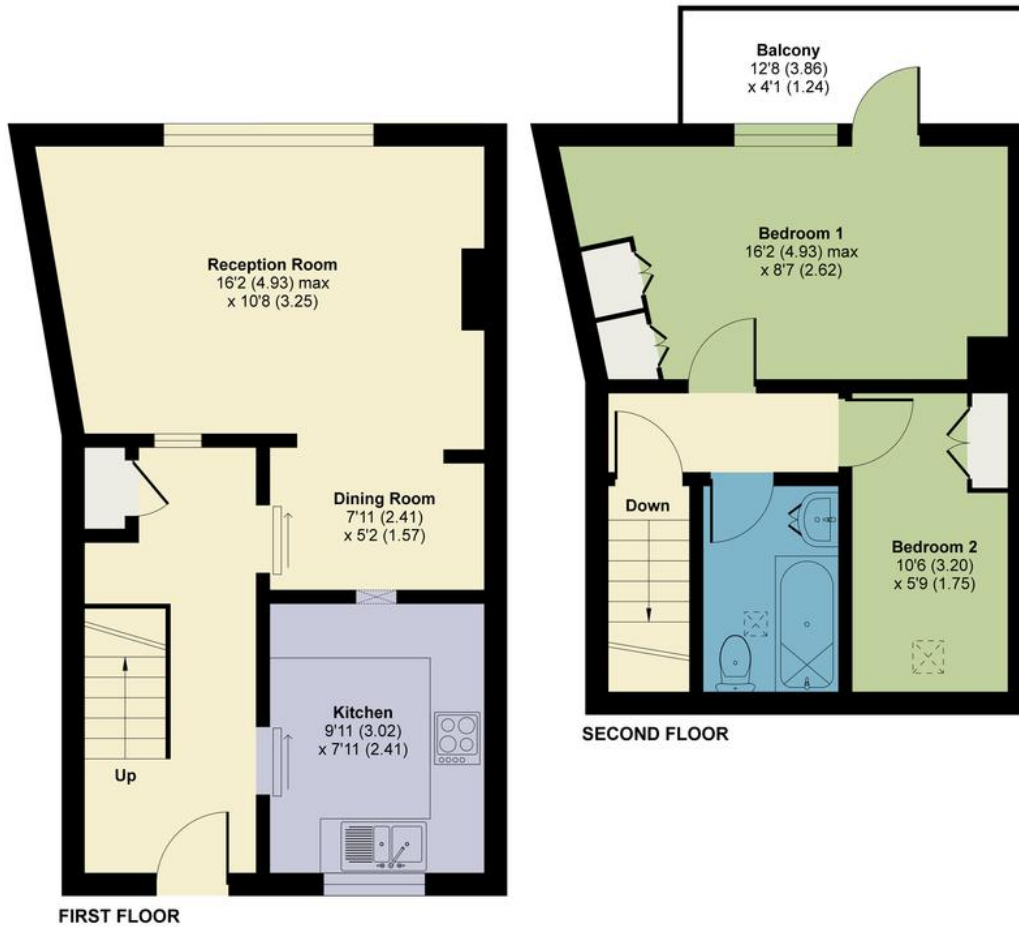
For further information, please contact:

Abingdon Office

www.oliverjames.com

E: abingdon@oliverjames.com

T: 01235 555007



These particulars, whilst believed to be accurate are set out as a general outline only for guidance and do not constitute any part of an offer or contract. Intending purchasers should not rely on them as statements of representation or fact, but must satisfy themselves by inspection or otherwise as to their accuracy. No person in this firm's employment has the authority to make or give any representation or warranty in respect of the property.



Certified Property Measurer

Floor plan produced in accordance with RICS Property Measurement Standards incorporating International Property Measurement Standards (IPMS2 Residential). ©n\checon 2021. Produced for Oliver James Estate Agents Limited. REF: 685293