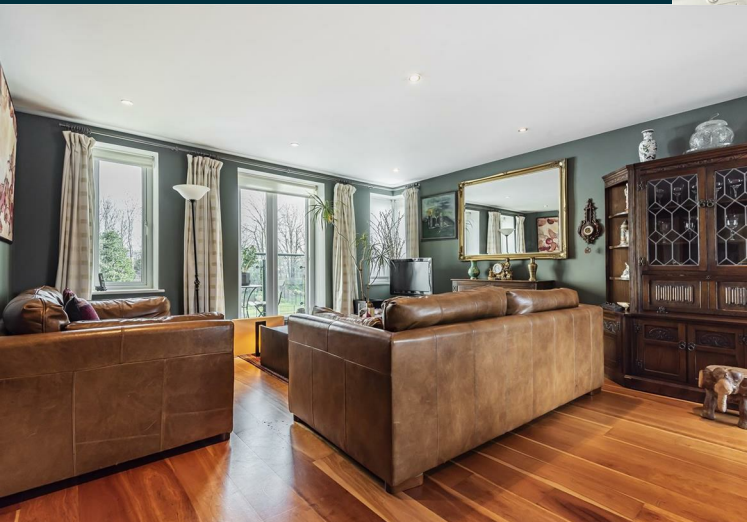


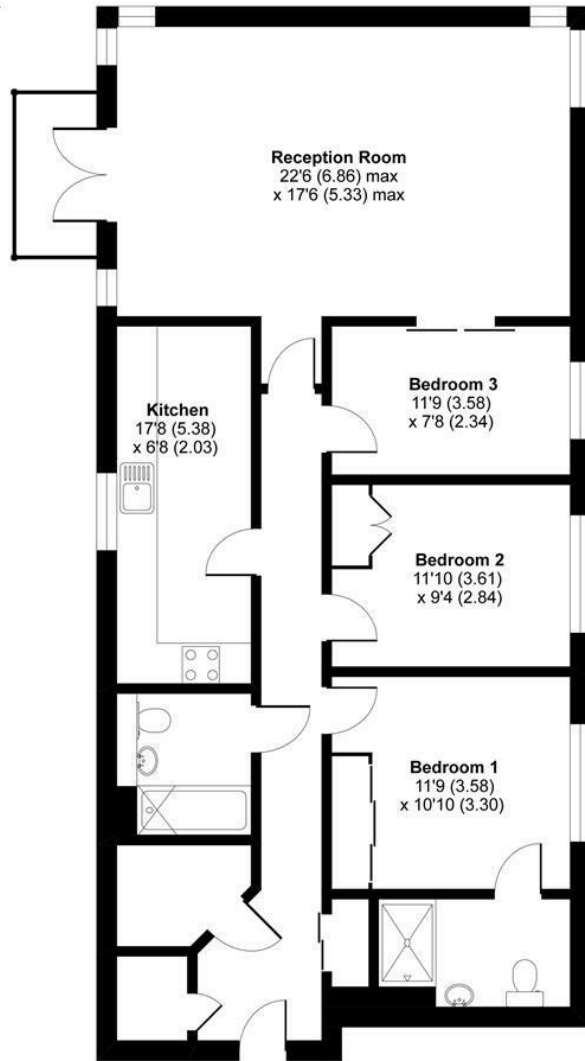
**Birchgrove House
Strand Drive
Kew
TW9 4DN**

£930,000

ChaseBuchanan



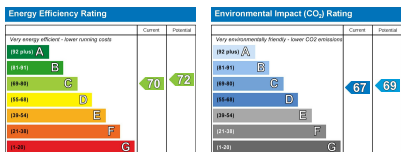
Approximate Area = 1108 sq ft / 102.9 sq m
For identification only - Not to scale



FIRST FLOOR



Floor plan produced in accordance with RICS Property Measurement Standards incorporating International Property Measurement Standards (IPMS2 Residential). © nichocom 2021. Produced for Chase Buchanan. REF: 685856



- Viewings accompanied by Chase Buchanan
- Exclusive modern development
- Very well presented
- Manicured communal gardens
- On site gymnasium
- 24 hour concierge and private parking
- Abundance of entertaining space
- Balcony to southerly aspect
- Moments from River Thames
- EPC C

A spectacular 1100 sq.ft, 3 bedroom apartment on the first floor of this exclusive riverside development in Kew. This super property features an abundance of lateral and expansive living space to include a fabulous open-plan living room boasting ample space for dining and relaxing with guests.

The private terrace is the perfect place for al-fresco dining, whilst the modern fitted kitchen benefits from a fantastic range of integrated appliances and ample food preparation areas.

The glorious master bedroom is enhanced with an en-suite shower room and the guest bedroom is complemented by a range of built in wardrobes. The property benefits from masses of storage space and a versatile layout, thus, should you work from home, then bedrooms 2 or 3 could make for the perfect office/study.

Other features include, beautiful manicured gardens, residents gymnasium, private parking, 24 hour concierge and a very long lease.

This wonderful apartment is well located for good access to Kew Gardens, Kew Bridge, the outstanding transport links the area has to offer and the picturesque towpath walks along the River Thames. Additionally, some outstanding schools are in close proximity.

Please call now to view.

For more information or to book a viewing, please contact:

020 8948 1331

ChaseBuchanan

20 Red Lion Street, Richmond, TW9 1RW