



Connaught Mansions, Coldharbour Lane, SW9

£525,000

2 bedroom flat - purpose built for sale

Property Details

The current owner has lovingly restored many of the original features of this property as well as opening the rooms up to create a bright and spacious feel within. The apartment comprises a bright open-plan eat-in reception room complete with original brickwork feature wall, a recently installed galley kitchen that opens out onto this sociable space with contemporary looking cabinets, a sleek work top and fully integrated state-of-the-art appliances. A pair of very spacious double bedrooms, and a newly installed and bathroom. The icing on the cake is the huge communal roof terrace. Loved and cared for by the residents of Connaught Mansions, each flat has a spot to call their own, and the space is a real sun trap, perfect for enjoying summer BBQs, or watching the sunset with friends, offering great views across Brixton and all the way into the city. The building also includes a secure bike lock-up in the courtyard for buyers bringing bikes along with them.

Features

- Two double bedrooms
- Over 670 square feet of internal living space
- Victorian mansion block
- Large communal roof terrace
- Local amenities on the doorstep
- Victoria line in minutes
- Brockwell Park in walking distance

Council tax band B EPC rating (null)







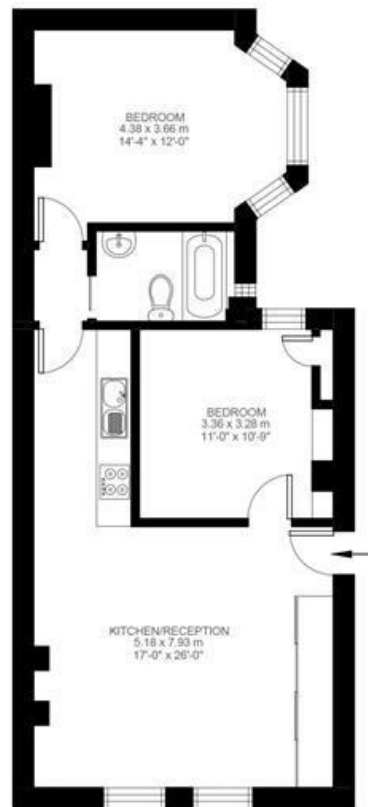
Coldharbour Lane

2 Bedroom Flat

Approx internal area:

671 sqft 62 sqm

While we do try our very best, floor plans are produced as a guide only and we take no responsibility for the precise accuracy with which any property is represented



Second Floor



Connaught Mansions, Coldharbour Lane, SW9

